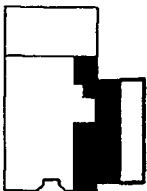


119 EAST 23RD STREET
17th FLOOR APT- A

All dimensions are approximate and subject to normal construction variances and tolerances. Dimensions are maximum overall subtract cutouts. We reserve the right to make changes due to unforeseen conditions in accordance with the offering plan.



H. THOMAS O'HARA
 ARCHITECT, PLLC

135 W. 36th Street
 New York, NY 10018
 212 695 3117
 212 695 3118 : fax

project:
 119 East 23rd Street

drawing title:
 17th Apt A

project number:
 0235

date:
 03/24/04

scale:
 NTS

drawn by: checked by:
 EA FM

drawing number:

17-A