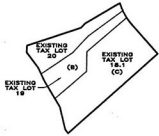


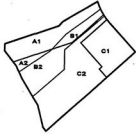


EXISTING TAX LOTS

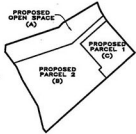


PROPOSED TRANSFERS

A1 + B1 TO A
A2 + B2 + C2 TO B
C1 TO C



RESULTING LOTS



NOTE:

LOT NUMBERS SHOWN ARE FROM MAP ENTITLED "SEATUCK PARK" FILED IN THE COUNTY CLERK'S OFFICE ON JULY 9, 1970 AS MAP NO. 5494.

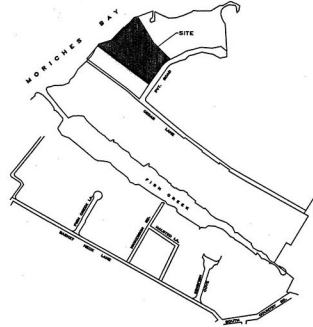
LOT NUMBERS SHOWN ARE FROM PROPOSED MAP "JACK FISHMAN".

DENOTES SECTION OF EXISTING STONE DRIVE TO BE RELOCATED.

DENOTES LOT LINES FROM FILED SUBDIVISION MAP ENTITLED "SEATUCK PARK".

10'—EXISTING CONTOUR FROM FIVE EASTERN TOWNS MAP, SHEET NO. L-27.

UNDERGROUND UTILITIES & SEPTIC SYSTEMS LOCATED BY OTHERS.



KEY MAP:
SCALE: 1" = 600'-0"

EXISTING AREAS FROM FILED MAP "SEATUCK PARK"

- 9- 91,099 SQ.FT.
- 10- 131,311 SQ.FT.
- 11- 97,384 SQ.FT.
- 12- 70,070 SQ.FT.

AREAS TO BE TRANSFERRED:

- OPEN SPACE:
- 12- 80,972 SQ.FT.
- 11- 17,729 SQ.FT.

LOT 1:

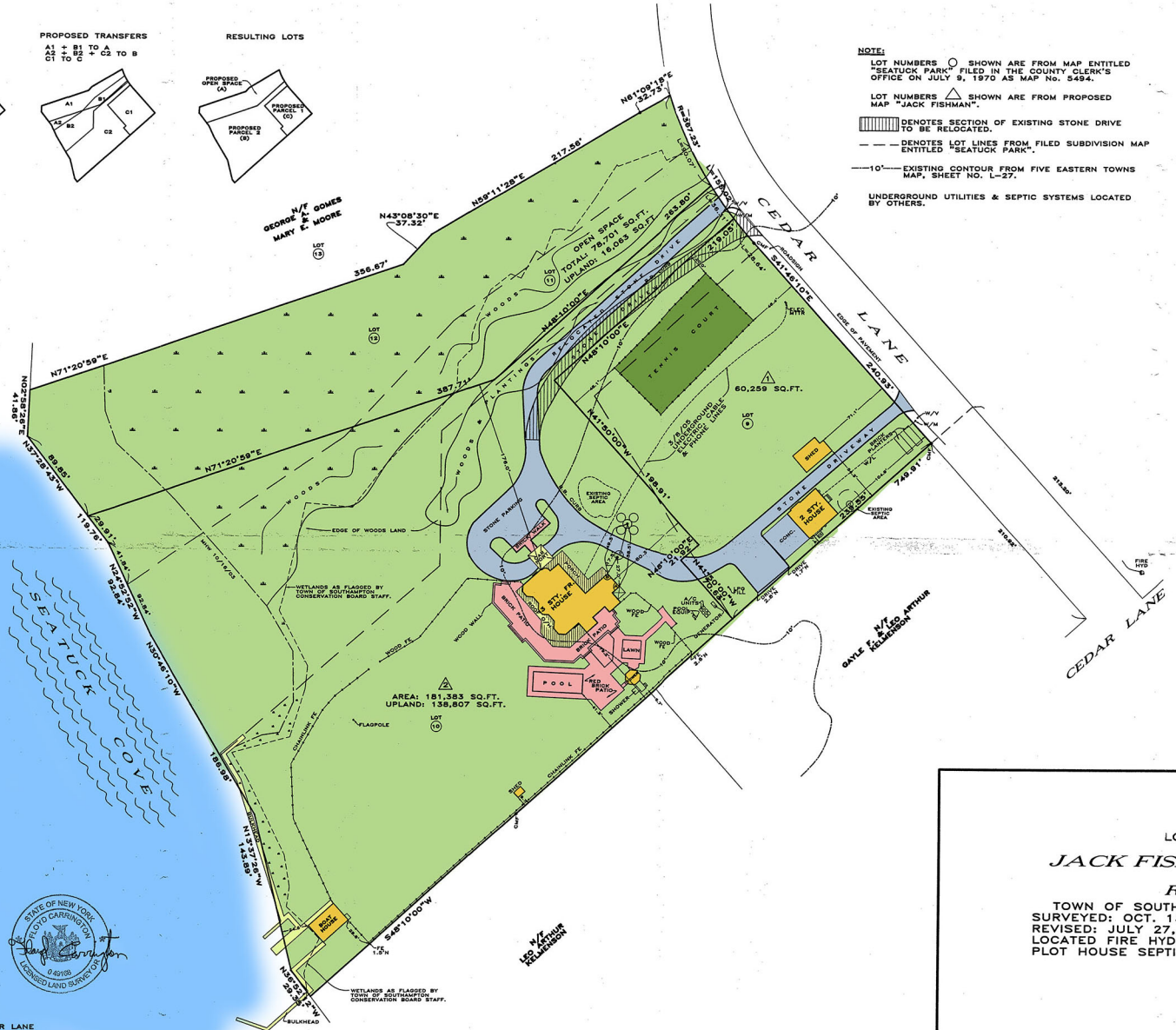
- 9- 51,591 SQ.FT.
- 10- 8,869 SQ.FT.

LOT 2:

- 9- 308 SQ.FT.
- 10- 122,142 SQ.FT.
- 11- 49,833 SQ.FT.
- 12- 6,098 SQ.FT.

AREAS AFTER TRANSFER:

- OPEN SPACE- 78,701 SQ.FT.
- LOT 1- 80,259 SQ.FT.
- LOT 2- 181,383 SQ.FT.



TAX MAP
DISTRICT 0900
SECTION 375
BLOCK 01
LOT 17 & 18



UNIMPAIRED ALLEGATION AS ACCORD TO A SURVEY...
STATE OF NEW YORK
COUNTY OF SUFFOLK
RAYNOR, MARCKS & CARRINGTON SURVEYING
77 JESSUP AVENUE
QUOGUE, N.Y.
651-883-4088

74 CEDAR LANE
AREA: 320,343 SQ. FT. (TOTAL)

LOT LINE MODIFICATION
FOR
JACK FISHMAN FAMILY LLC
SITUATE
REMSENBERG

TOWN OF SOUTHAMPTON - SUFFOLK COUNTY, N.Y.
SURVEYED: OCT. 13, 2003 - SCALE: 1" INCH = 50' FT.
REVISED: JULY 27, 2004; OCTOBER 21, 2004
LOCATED FIRE HYD. & EDGE OF WOODS: DEC. 13, 2004
PLOT HOUSE SEPTIC LOCATED BY OTHERS: AUGUST 26, 2005



R-60 ZONING

D30-48

D30-48