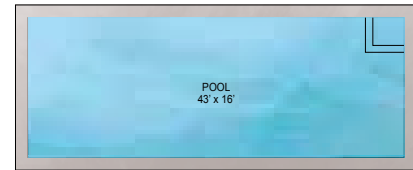


TENNIS COURT



POOL

FIRST FLOOR: 2300 ft² (INT)
 831ft² (EXT)
 GARAGE: 696 ft² (INT)
 BONUS ROOM OVER GARAGE: 508 ft² (INT)
 POOL: 688 ft²
 TENNIS COURT: 2958 ft²

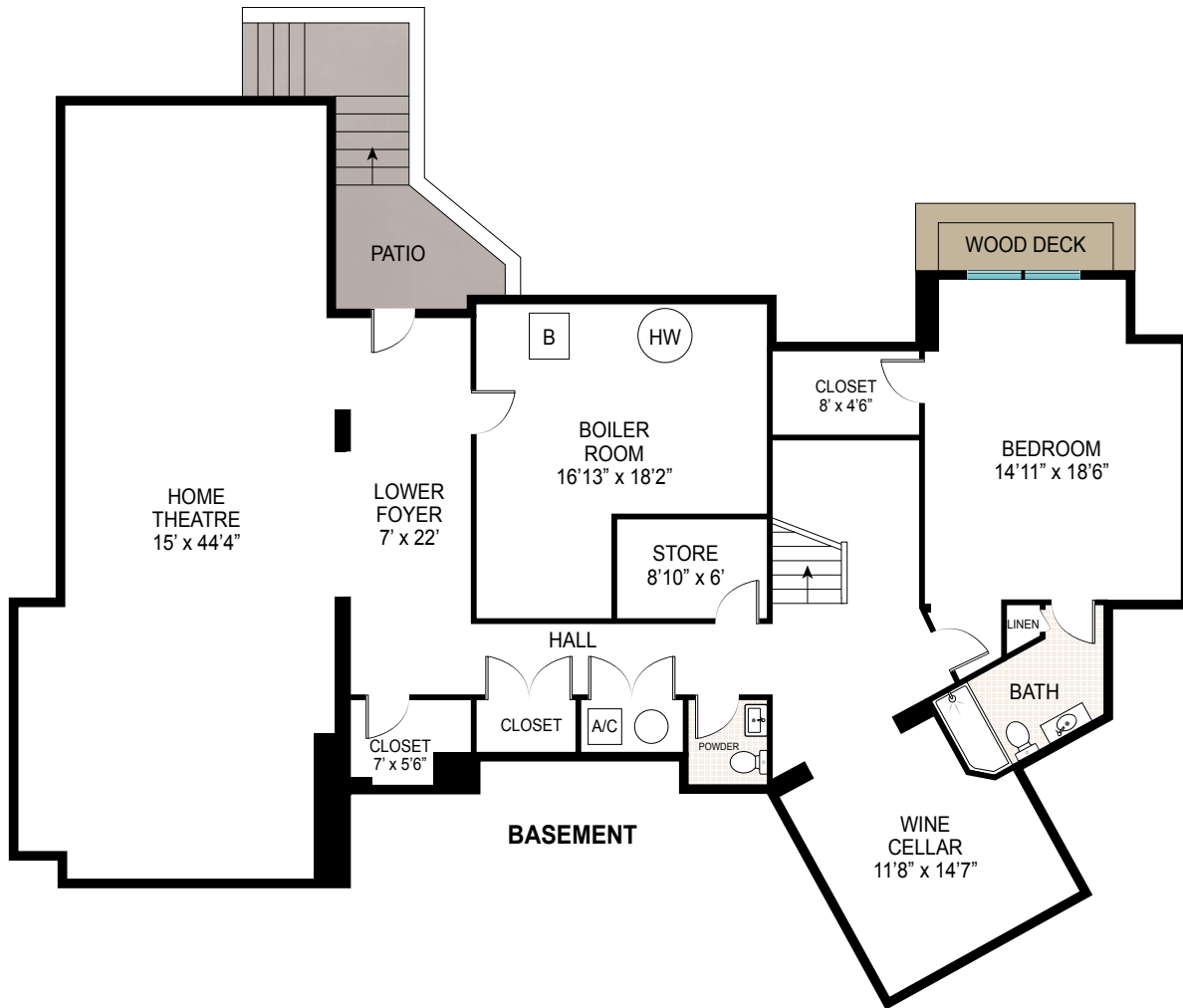
Scale in feet. Indicative only. Dimensions are approximate. All information contained herein is gathered from sources we believe to be reliable. However, we cannot guarantee its accuracy and interested persons should rely on their own enquiries.



SECOND FLOOR

INT: 1462 ft²

Scale in feet. Indicative only. Dimensions are approximate. All information contained herein is gathered from sources we believe to be reliable. However, we cannot guarantee its accuracy and interested persons should rely on their own enquiries.



BASEMENT: 2068 ft² (INT)
146 ft² (EXT)

Scale in feet. Indicative only. Dimensions are approximate. All information contained herein is gathered from sources we believe to be reliable. However, we cannot guarantee its accuracy and interested persons should rely on their own enquiries.

39 Old Country Road, Watermill

corcoran
corcoran group real estate