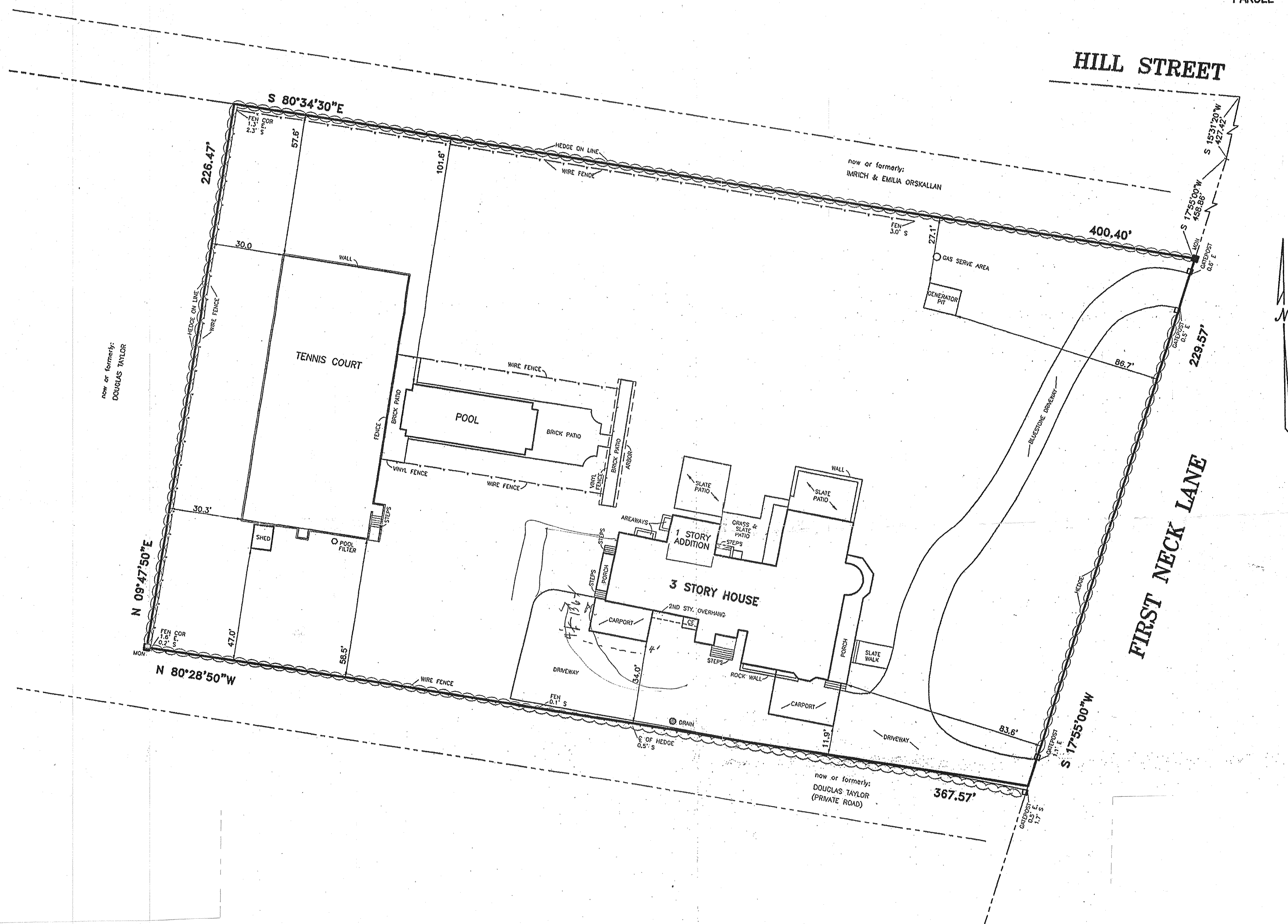


DISTRICT	0904
SECTION	14.00
BLOCK	02.00
PARCEL	013.000



SITUATE  
**INC. VILLAGE OF SOUTHAMPTON**  
 TOWN OF SOUTHAMPTON  
 SUFFOLK COUNTY, NEW YORK  
 AREA = 87,036 S.F. (1.998 ACRES)

REVISED: NOVEMBER 4, 2008 (FINAL ON ADDITION)  
 REVISED: APRIL 8, 2005 (PATIO & HEDGE LOC.)  
 SURVEYED: FEBRUARY 24, 2005

*Lester Holden*  
 LESTER HOLDEN, L.S. No. 49548  
 S. H. W. & S. LAND SURVEYORS P.C.  
**SQUIRES, HOLDEN, WEISENBACHER & SMITH**  
 LAND SURVEYORS ~ ENGINEERS  
 SOUTHAMPTON ~ NEW YORK

