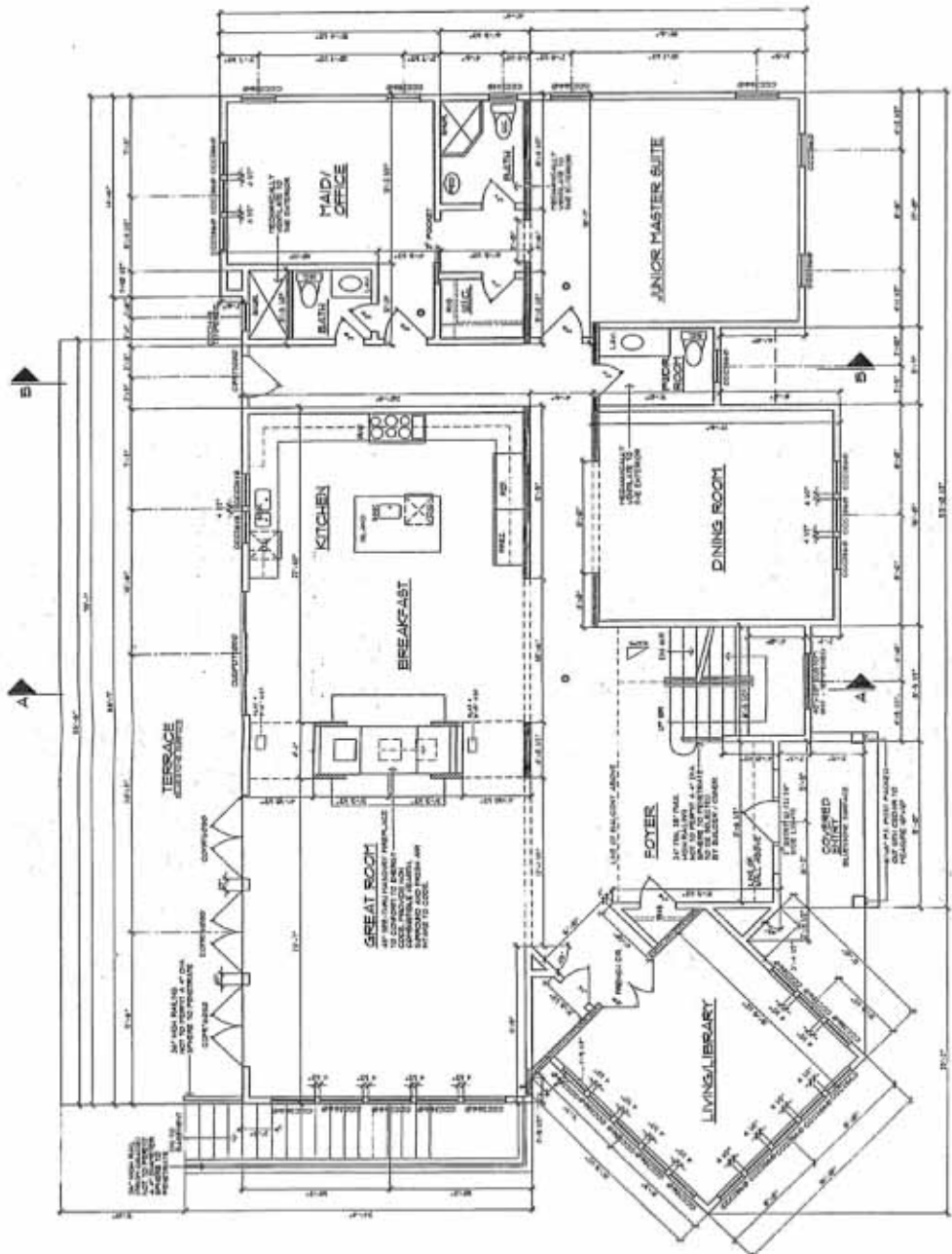


HEADER SCHEDULE	
101398	CONCRETE FLOOR
101399	CONCRETE FLOOR
101400	CONCRETE FLOOR
101401	CONCRETE FLOOR
101402	CONCRETE FLOOR
101403	CONCRETE FLOOR
101404	CONCRETE FLOOR
101405	CONCRETE FLOOR
101406	CONCRETE FLOOR
101407	CONCRETE FLOOR
101408	CONCRETE FLOOR
101409	CONCRETE FLOOR
101410	CONCRETE FLOOR
101411	CONCRETE FLOOR
101412	CONCRETE FLOOR
101413	CONCRETE FLOOR
101414	CONCRETE FLOOR
101415	CONCRETE FLOOR
101416	CONCRETE FLOOR
101417	CONCRETE FLOOR
101418	CONCRETE FLOOR
101419	CONCRETE FLOOR
101420	CONCRETE FLOOR
101421	CONCRETE FLOOR
101422	CONCRETE FLOOR
101423	CONCRETE FLOOR
101424	CONCRETE FLOOR
101425	CONCRETE FLOOR
101426	CONCRETE FLOOR
101427	CONCRETE FLOOR
101428	CONCRETE FLOOR
101429	CONCRETE FLOOR
101430	CONCRETE FLOOR
101431	CONCRETE FLOOR
101432	CONCRETE FLOOR
101433	CONCRETE FLOOR
101434	CONCRETE FLOOR
101435	CONCRETE FLOOR
101436	CONCRETE FLOOR
101437	CONCRETE FLOOR
101438	CONCRETE FLOOR
101439	CONCRETE FLOOR
101440	CONCRETE FLOOR
101441	CONCRETE FLOOR
101442	CONCRETE FLOOR
101443	CONCRETE FLOOR
101444	CONCRETE FLOOR
101445	CONCRETE FLOOR
101446	CONCRETE FLOOR
101447	CONCRETE FLOOR
101448	CONCRETE FLOOR
101449	CONCRETE FLOOR
101450	CONCRETE FLOOR
101451	CONCRETE FLOOR
101452	CONCRETE FLOOR
101453	CONCRETE FLOOR
101454	CONCRETE FLOOR
101455	CONCRETE FLOOR
101456	CONCRETE FLOOR
101457	CONCRETE FLOOR
101458	CONCRETE FLOOR
101459	CONCRETE FLOOR
101460	CONCRETE FLOOR
101461	CONCRETE FLOOR
101462	CONCRETE FLOOR
101463	CONCRETE FLOOR
101464	CONCRETE FLOOR
101465	CONCRETE FLOOR
101466	CONCRETE FLOOR
101467	CONCRETE FLOOR
101468	CONCRETE FLOOR
101469	CONCRETE FLOOR
101470	CONCRETE FLOOR
101471	CONCRETE FLOOR
101472	CONCRETE FLOOR
101473	CONCRETE FLOOR
101474	CONCRETE FLOOR
101475	CONCRETE FLOOR
101476	CONCRETE FLOOR
101477	CONCRETE FLOOR
101478	CONCRETE FLOOR
101479	CONCRETE FLOOR
101480	CONCRETE FLOOR
101481	CONCRETE FLOOR
101482	CONCRETE FLOOR
101483	CONCRETE FLOOR
101484	CONCRETE FLOOR
101485	CONCRETE FLOOR
101486	CONCRETE FLOOR
101487	CONCRETE FLOOR
101488	CONCRETE FLOOR
101489	CONCRETE FLOOR
101490	CONCRETE FLOOR
101491	CONCRETE FLOOR
101492	CONCRETE FLOOR
101493	CONCRETE FLOOR
101494	CONCRETE FLOOR
101495	CONCRETE FLOOR
101496	CONCRETE FLOOR
101497	CONCRETE FLOOR
101498	CONCRETE FLOOR
101499	CONCRETE FLOOR
101500	CONCRETE FLOOR
101501	CONCRETE FLOOR
101502	CONCRETE FLOOR
101503	CONCRETE FLOOR
101504	CONCRETE FLOOR
101505	CONCRETE FLOOR
101506	CONCRETE FLOOR
101507	CONCRETE FLOOR
101508	CONCRETE FLOOR
101509	CONCRETE FLOOR
101510	CONCRETE FLOOR
101511	CONCRETE FLOOR
101512	CONCRETE FLOOR
101513	CONCRETE FLOOR
101514	CONCRETE FLOOR
101515	CONCRETE FLOOR
101516	CONCRETE FLOOR
101517	CONCRETE FLOOR
101518	CONCRETE FLOOR
101519	CONCRETE FLOOR
101520	CONCRETE FLOOR
101521	CONCRETE FLOOR
101522	CONCRETE FLOOR
101523	CONCRETE FLOOR
101524	CONCRETE FLOOR
101525	CONCRETE FLOOR
101526	CONCRETE FLOOR
101527	CONCRETE FLOOR
101528	CONCRETE FLOOR
101529	CONCRETE FLOOR
101530	CONCRETE FLOOR
101531	CONCRETE FLOOR
101532	CONCRETE FLOOR
101533	CONCRETE FLOOR
101534	CONCRETE FLOOR
101535	CONCRETE FLOOR
101536	CONCRETE FLOOR
101537	CONCRETE FLOOR
101538	CONCRETE FLOOR
101539	CONCRETE FLOOR
101540	CONCRETE FLOOR
101541	CONCRETE FLOOR
101542	CONCRETE FLOOR
101543	CONCRETE FLOOR
101544	CONCRETE FLOOR
101545	CONCRETE FLOOR
101546	CONCRETE FLOOR
101547	CONCRETE FLOOR
101548	CONCRETE FLOOR
101549	CONCRETE FLOOR
101550	CONCRETE FLOOR



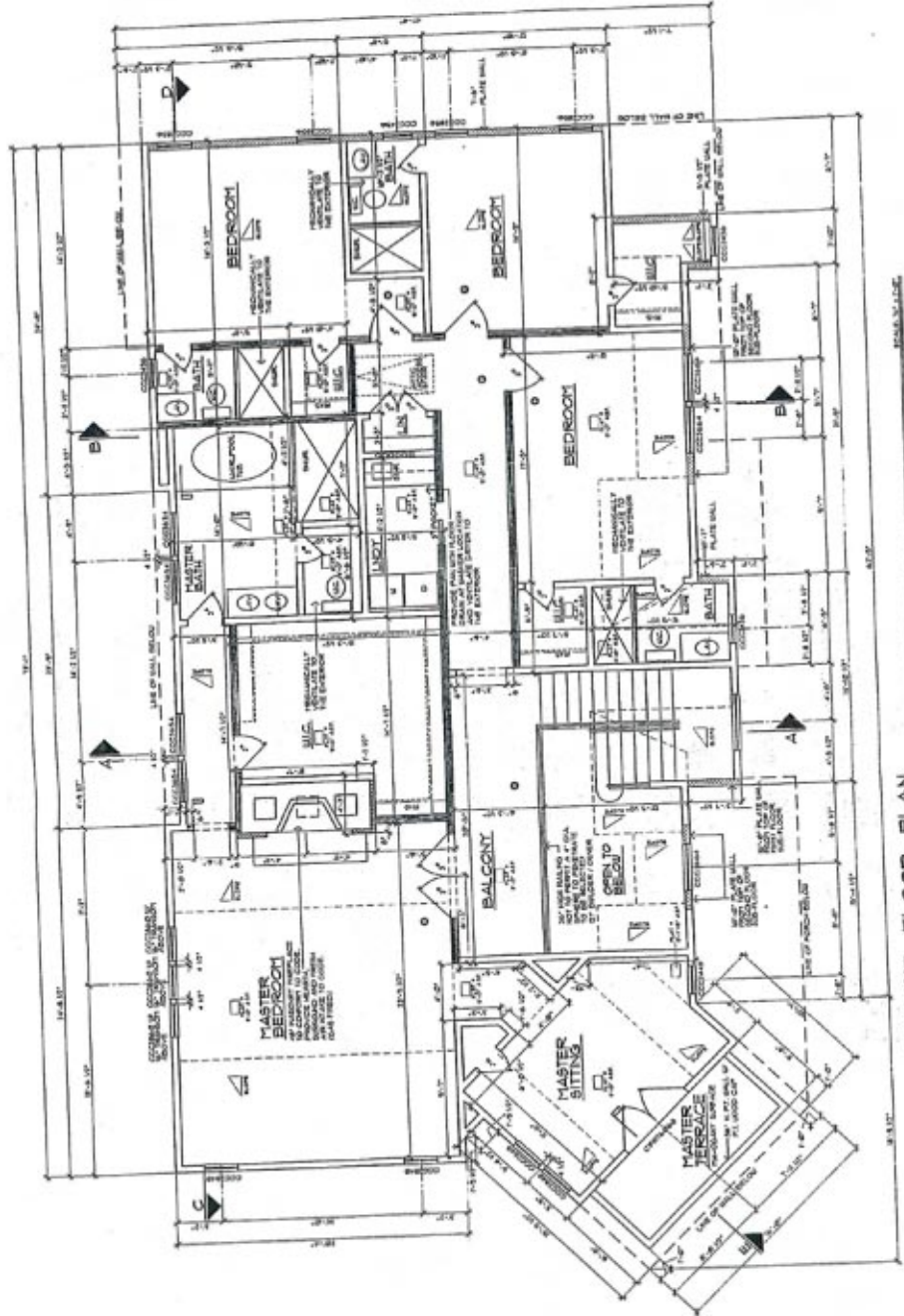
FIRST FLOOR PLAN
 NOTE: ALL WALLS ARE 8" W/ 20% COMPRESSIONAL STRENGTH UNLESS NOTED OTHERWISE.
 DIMENSIONS INDICATED IN FEET & INCHES UNLESS OTHERWISE SPECIFIED. SEE SECTION R101 OF IBC FOR MORE DETAILS.

PROPOSED RESIDENCE
 MAINSCOTT HOLLOW ROAD
 MAINSCOTT, NEW YORK
 MGD ONOUGH & ASSOCIATES
 631.491.8400
 631.294.5055
 2100 Longwood Blvd. Suite 300, Wallingford, CT 06495

CONSULTANT
 C. G. ...
 DRAFTER
 DATE

THIS SET IS A VIOLATION OF THE LABOR AND PENSION LAWS ACTING UNDER THE DIRECTION OF THE REGISTERED ARCHITECT TO ALTER ANY ITEM ON THIS DOCUMENT IN ANY WAY.

LEADER SCHEDULE	
101	CONCRETE FLOOR
102	CONCRETE WALL
103	CONCRETE SLAB
104	CONCRETE CURB
105	CONCRETE CHIMNEY
106	CONCRETE CHIMNEY
107	CONCRETE CHIMNEY
108	CONCRETE CHIMNEY
109	CONCRETE CHIMNEY
110	CONCRETE CHIMNEY
111	CONCRETE CHIMNEY
112	CONCRETE CHIMNEY
113	CONCRETE CHIMNEY
114	CONCRETE CHIMNEY
115	CONCRETE CHIMNEY
116	CONCRETE CHIMNEY
117	CONCRETE CHIMNEY
118	CONCRETE CHIMNEY
119	CONCRETE CHIMNEY
120	CONCRETE CHIMNEY



SECOND FLOOR PLAN
 SEE ALL WALLS TO BE REMOVED OR ALTERED IN THIS DRAWING FOR DETAILS.
 DIMENSIONS UNLESS OTHERWISE SPECIFIED ARE PER SECTION NOT IN THIS DRAWING.

DESCRIPTION	DATE
DESIGNED BY	
DRAWN BY	
CHECKED BY	
DATE	

PROPOSED RESIDENCE
 MAINSCOTT HOLLOW ROAD LLC
 MAINSCOTT, NEW YORK

MCDONOUGH ARCHITECTURE
 631.481.8400
 631.234.5065
 1050 Greenway Blvd, Suite 202, Stamford, CT 06907

JOB NUMBER	
DATE	
REVISIONS	
DATE	

A415

BID SET

WARNING: IT IS A VIOLATION OF THE LAW FOR ANY PERSON UNLESS ACTING UNDER THE SUPERVISION OF THE REGISTERED ARCHITECT TO ALTER ANY ITEM ON THIS DOCUMENT IN ANY WAY.

REVISION	DATE
CHECKED BY	
DRAWN BY	

CONSULTANTS

CONTRACT NO. / PROJECT NO. / COMMENT

PROPOSED RESIDENCE
 MAINSCOTT HOLLOW ROAD LLC
 32 MAINSCOTT HOLLOW ROAD
 MAINSCOTT, NEW YORK

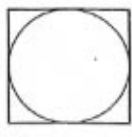
REDONOUGH
 REGISTERED ARCHITECT
 631.491.6400
 631.294.5055
 188 Express Ave. Ste. 104
 11th Floor
 11th Floor

JOB NO. / PROJECT

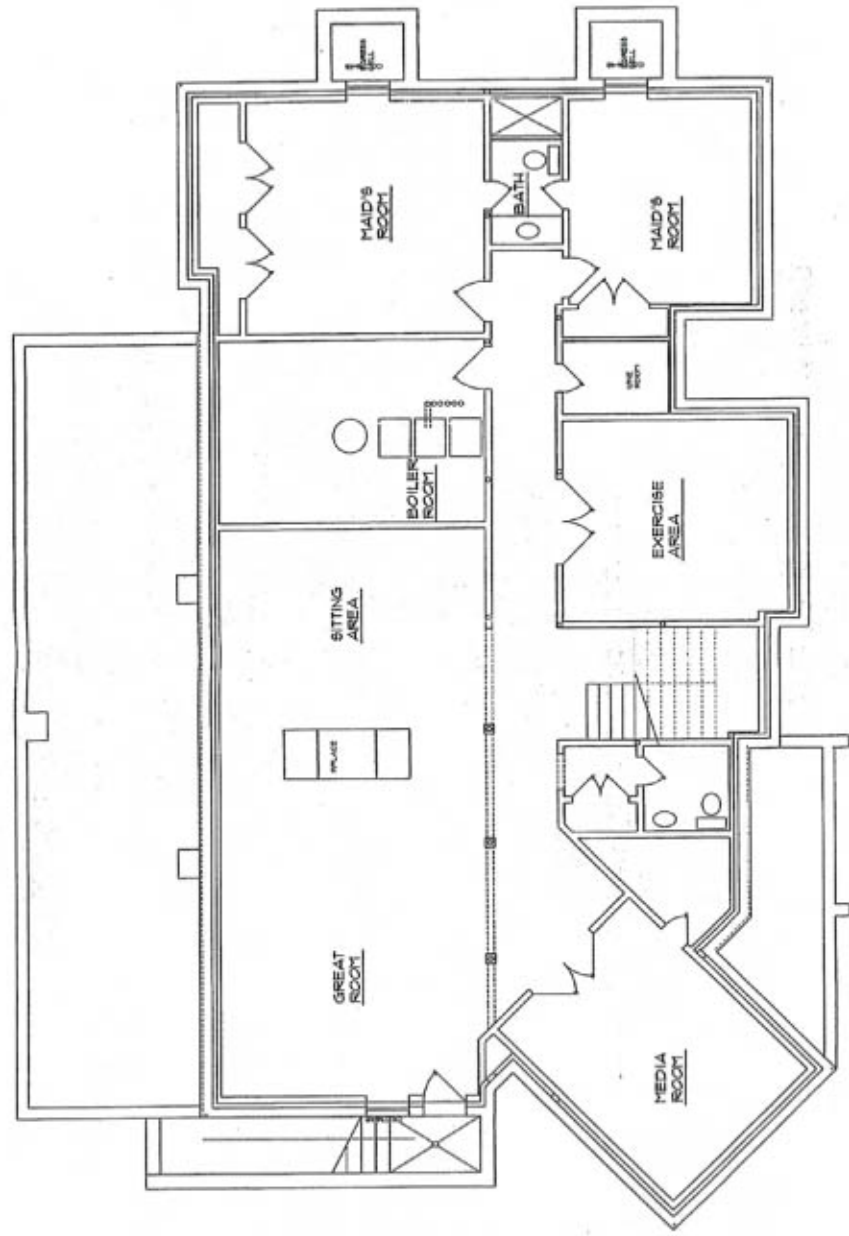
DATE

SCALE / NOTES

GRAPH



ASB 15



PROPOSED FINISHED BASEMENT PLAN

SCALE: 1/4" = 1'-0"

BID SET