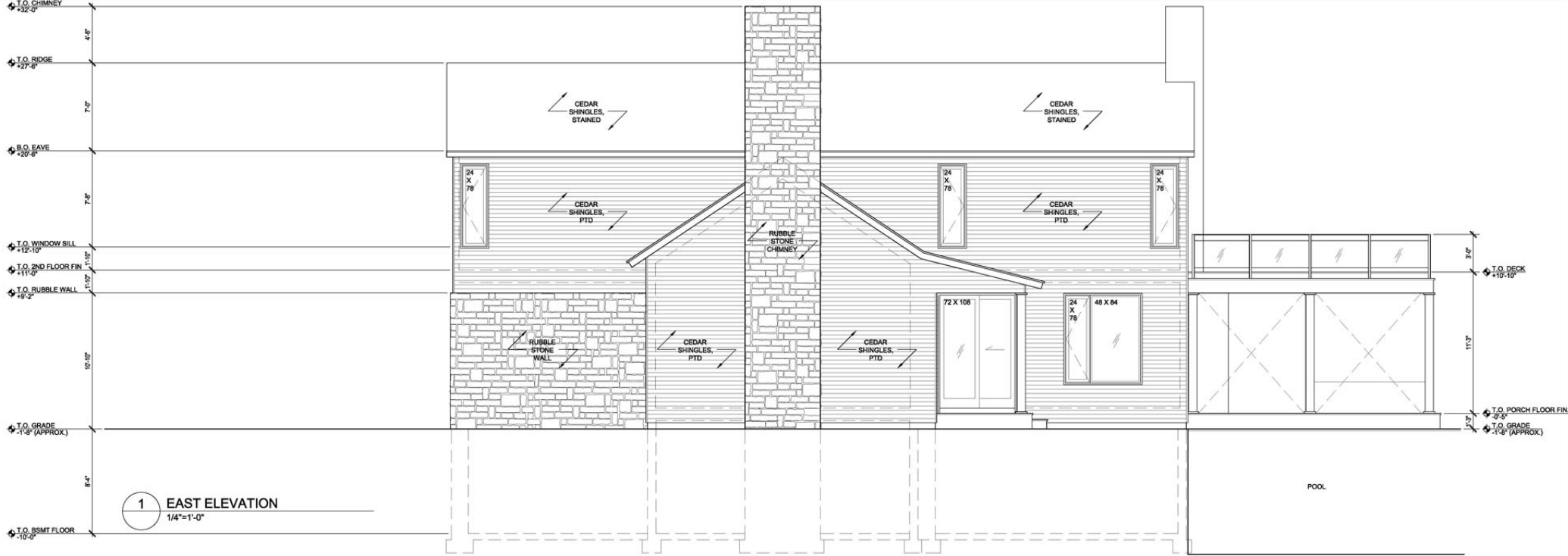


1 SOUTH ELEVATION  
1/4"=1'-0"



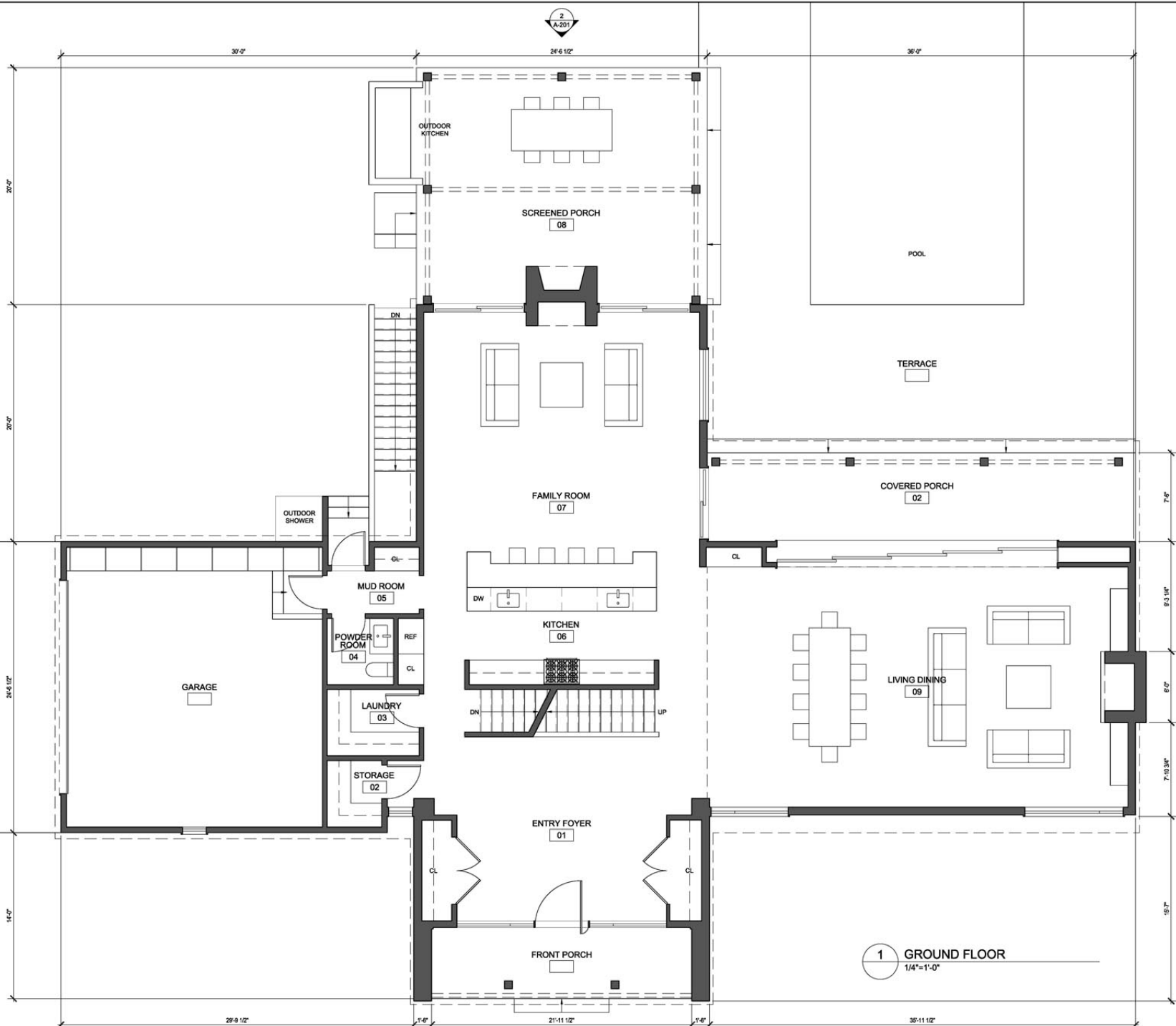
2 NORTH ELEVATION  
1/4"=1'-0"



**1 EAST ELEVATION**  
1/4"=1'-0"

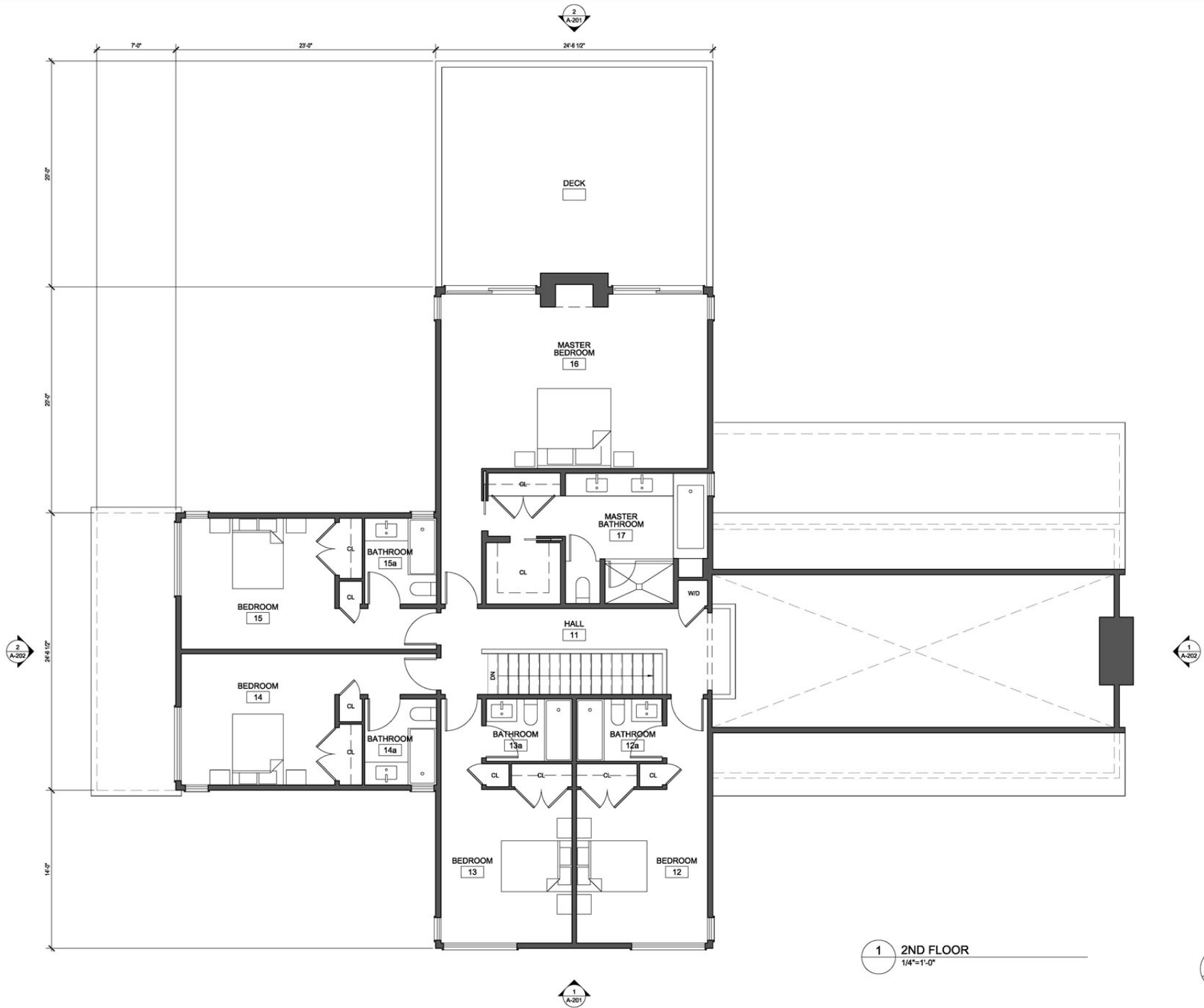


**2 WEST ELEVATION**  
1/4"=1'-0"



**1 GROUND FLOOR**  
1/4"=1'-0"





1 2ND FLOOR  
1/4"=1'-0"