

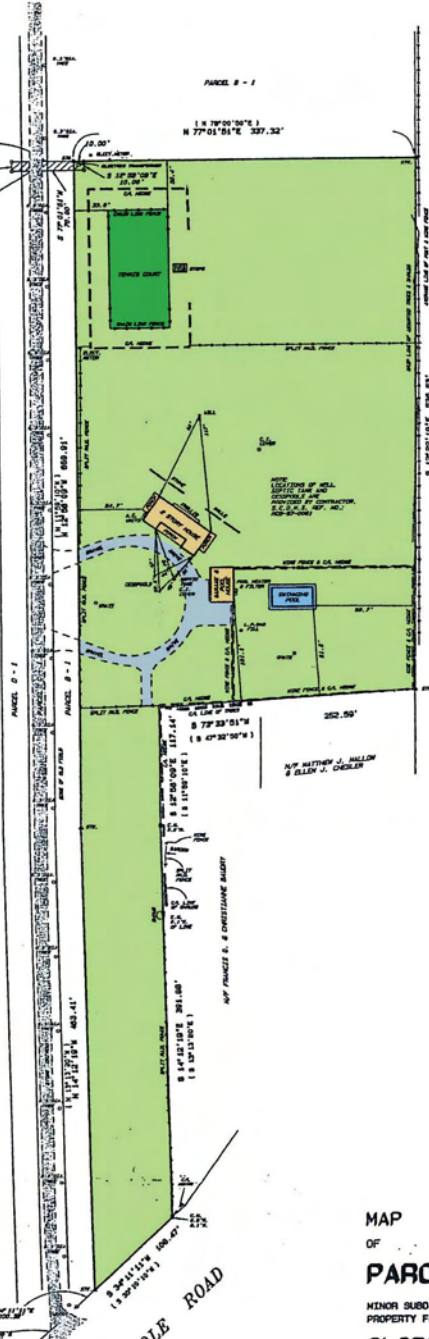
PROPOSED
ELECTRIC
EASEMENT

N 77° 01' 21" E
70.00'

N 18° 58' 00" W
70.00'

PARCEL B - 1

1 N 79° 00' 00" E
N 77° 01' 01" E 337.32'



SAY COUNTY OF SUFFOLK & THE ESTATE OF CHARLES HANCOCK, JR.

NOTES:

BEARINGS SHOWN HEREIN IN PARENTHESES () REFER TO THE KNOX SUBDIVISION MAP OF PROPERTY OF BUREAU SAFIER & JULIUS SER APPROVED BY THE PLANNING BOARD OF THE TOWN OF SOUTHAMPTON ON SEPTEMBER 8, 1978.

BEARINGS SHOWN HEREIN IN BOLD TYPE ARE REFERENCED TO THE STATE PLANE COORDINATE SYSTEM, LONG ISLAND ZONE, REFERENCE MONUMENTS ARE S-1478 AND S-1480.

UNLESS OTHERWISE SPECIFIED BY SECTION 84 OF THE GENERAL OREGON LAWS, THE PLANNING BOARD OF THE TOWN OF SOUTHAMPTON HAS THE HONOR OF APPROVING THIS MAP COPY IS PROVIDED FOR REFERENCE AND/OR AS A HISTORICAL DOCUMENT AND NO RESPONSIBILITY IS ASSUMED BY THE RAYNOR GROUP, P.E. & L.S. PLLC FOR ITS CONTENT.

MAP
OF
PARCEL A-1

MINOR SUBDIVISION MAP OF
PROPERTY FOR
GLORIA SAFIER & JULIUS SER

APPROVED BY THE PLANNING BOARD OF THE
TOWN OF SOUTHAMPTON ON SEPTEMBER 9, 1979
PREPARED FOR

SHAWN TULLY

SITUATE
**NORTH OF BRIDGEHAMPTON
TOWN OF SOUTHAMPTON
SUFFOLK COUNTY, N.Y.**

SCALE: 1" = 60'
AREA = 5.189 ACRES

TAX MAP NO.: 0900-038.00-01.00-008.002

AUGUST 3, 1999

THE INFORMATION REFLECTED IN THIS DOCUMENT WAS ACQUIRED BY THE RAYNOR GROUP, P.E. & L.S. PLLC. THIS MAP COPY IS PROVIDED FOR REFERENCE AND/OR AS A HISTORICAL DOCUMENT AND NO RESPONSIBILITY IS ASSUMED BY THE RAYNOR GROUP, P.E. & L.S. PLLC FOR ITS CONTENT.

THE RAYNOR GROUP, P.E. & L.S. PLLC
SAYVILLE CIVIL ENGINEERS SITE PLANNERS