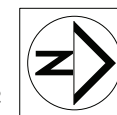


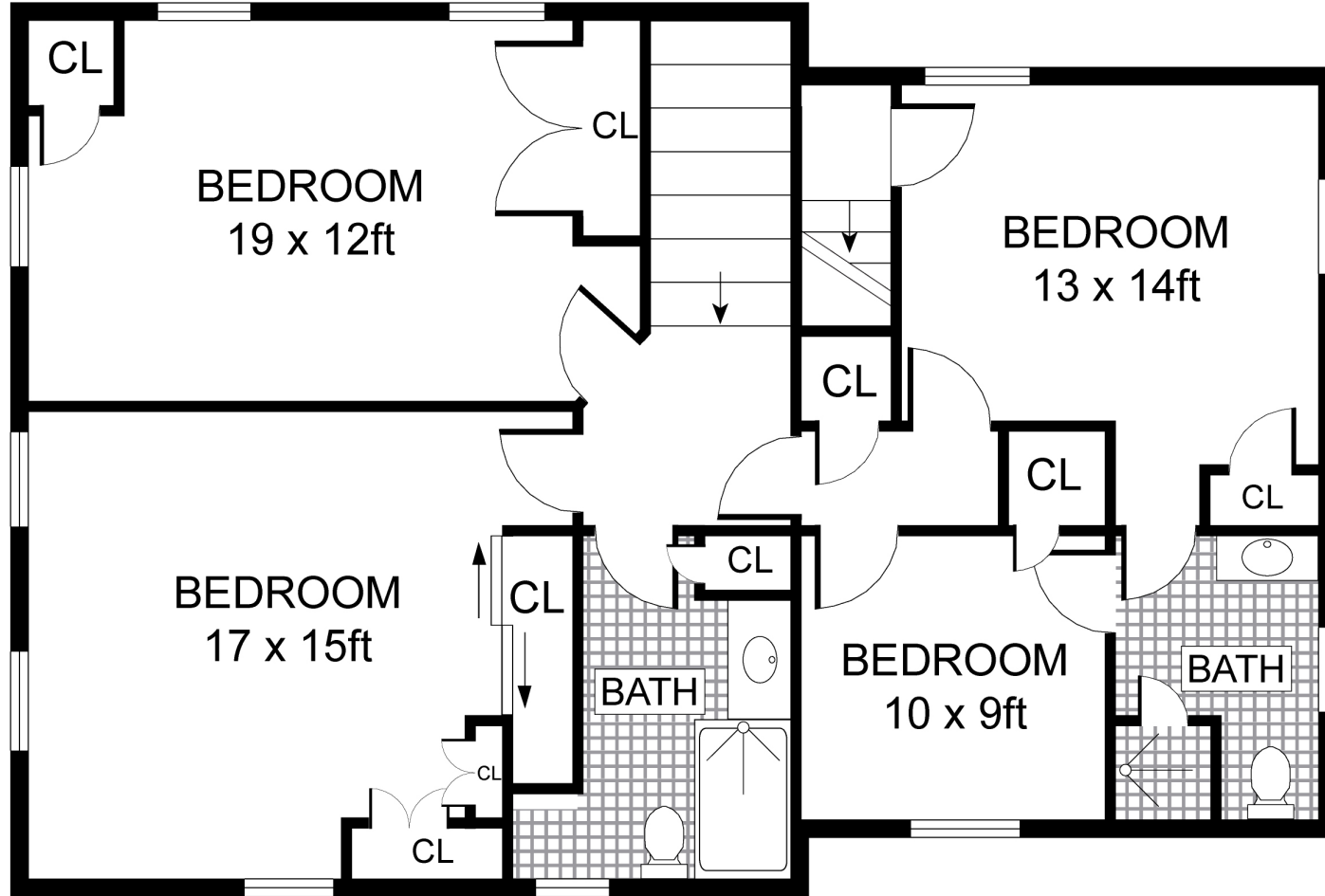
INT: 3 444 ft²



Scale in feet. Indicative only. Dimensions are approximate. All information contained herein is gathered from sources we believe to be reliable. However, we cannot guarantee its accuracy and interested persons should rely on their own enquiries.

342 Lopers, Path

corcoran
corcoran group real estate



SECOND FLOOR (LEFT SIDE)



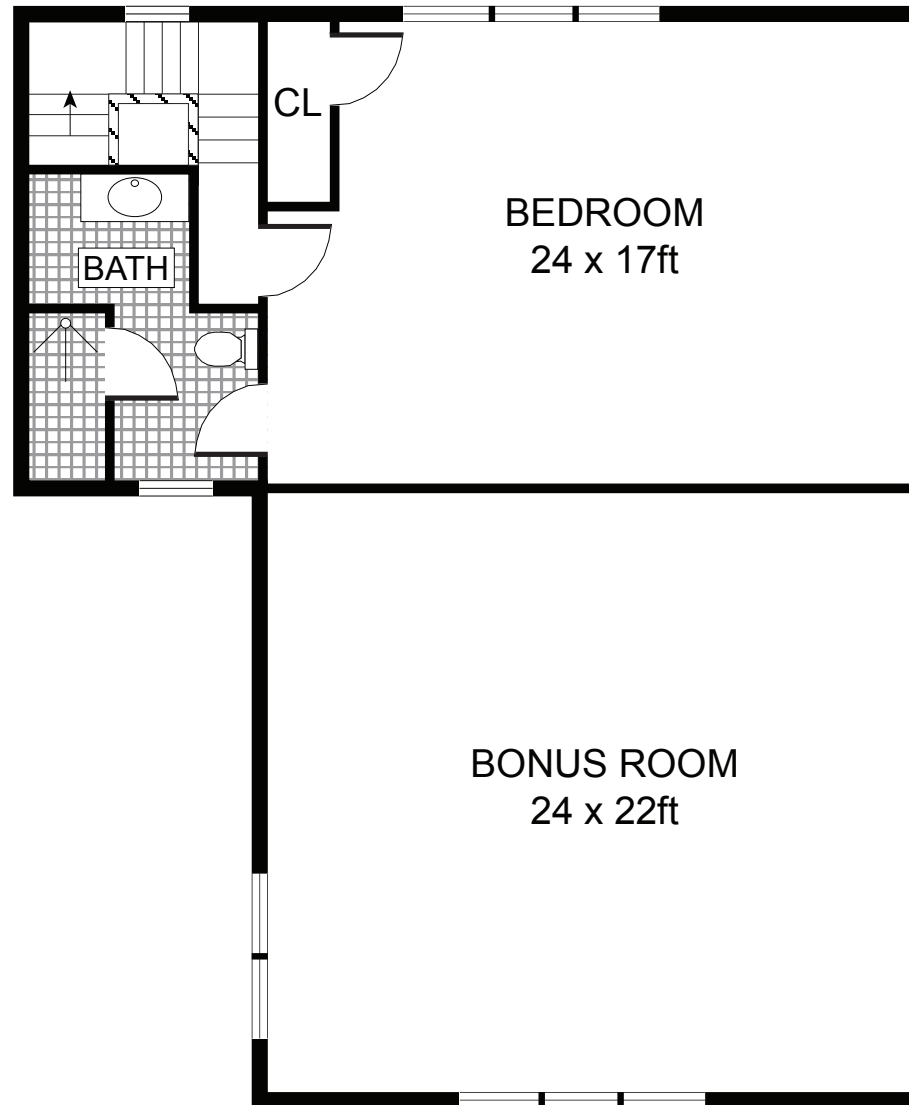
INT: 1 057 ft²



Scale in feet. Indicative only. Dimensions are approximate. All information contained herein is gathered from sources we believe to be reliable. However, we cannot guarantee its accuracy and interested persons should rely on their own enquiries.

342 Lopers, Path

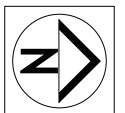
corcoran
corcoran group real estate



SECOND FLOOR (RIGHT SIDE)



INT: 1 066 ft²



Scale in feet. Indicative only. Dimensions are approximate. All information contained herein is gathered from sources we believe to be reliable. However, we cannot guarantee its accuracy and interested persons should rely on their own enquiries.