

CONDO

RESIDENCE D FLOOR 32-44

0 BEDROOMS / 1 BATHROOM
INTERIOR 530 SQ. FT.

RESIDENCE FEATURES

LIVING/BEDROOM

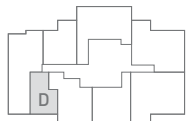
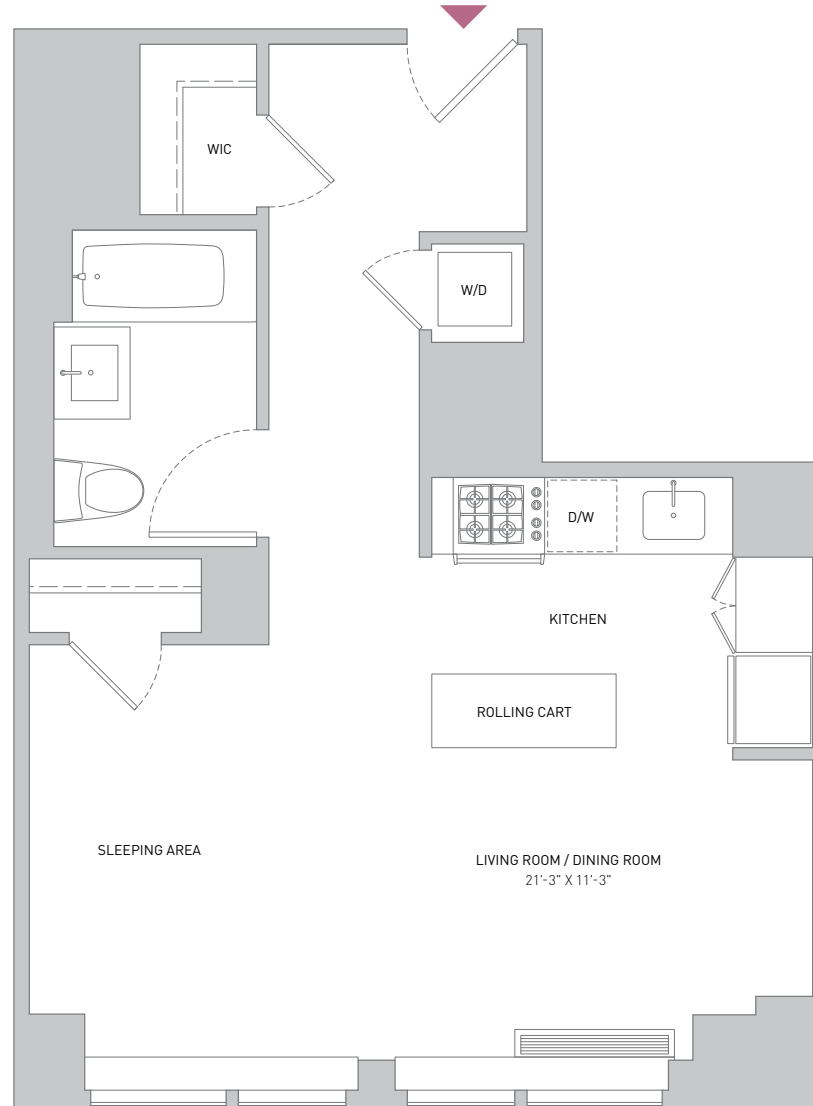
- 5" Gray Wash White Oak Floors
- Solar Shades

KITCHEN

- Viking 30" Professional Gas Cooktop
- Faber 30" Integrated Hood
- Bosch 30" 500 Series Electric Convection Oven
- Bosch Built-in 500 Series Microwave
- Liebherr 30" Integrated Premium Plus Series Refrigerator
- Bosch 500 Series Integrated Dishwasher
- Bosch Axis Front-Load Washer
- Bosch Axis Ventless Dryer
- Custom Polished Chrome Fixture and Stainless Steel Sink by Signature
- White with Grey Flecks Quartz Countertops and Backsplash
- Integrated Pantry
- Warm Grey Walnut and White Lacquer Cabinets
- Rolling Island Cart

BATHROOM

- White Quartz Walls (Master Only)
- Lagos Azul Limestone Floors (Master Only)
- Walk-in Shower (Master Only)
- Listelo Avila Floors and Walls (Secondary Bath)
- Custom Designed White Quartz Cast Sink
- White Lacquer Vanity
- Custom Designed Hand Shower



N →

0' 4' 8'



ALL DIMENSIONS ARE APPROXIMATE AND SUBJECT TO NORMAL CONSTRUCTION VARIANCES AND TOLERANCES. SQUARE FOOTAGE EXCEEDS THE USABLE FLOOR AREA. SPONSOR RESERVES THE RIGHT TO MAKE CHANGES IN ACCORDANCE WITH THE OFFERING PLAN.



SALES CENTER
388 Bridge Street, Brooklyn, NY 11201
1-718-878-1774 | 388BRIDGE.COM