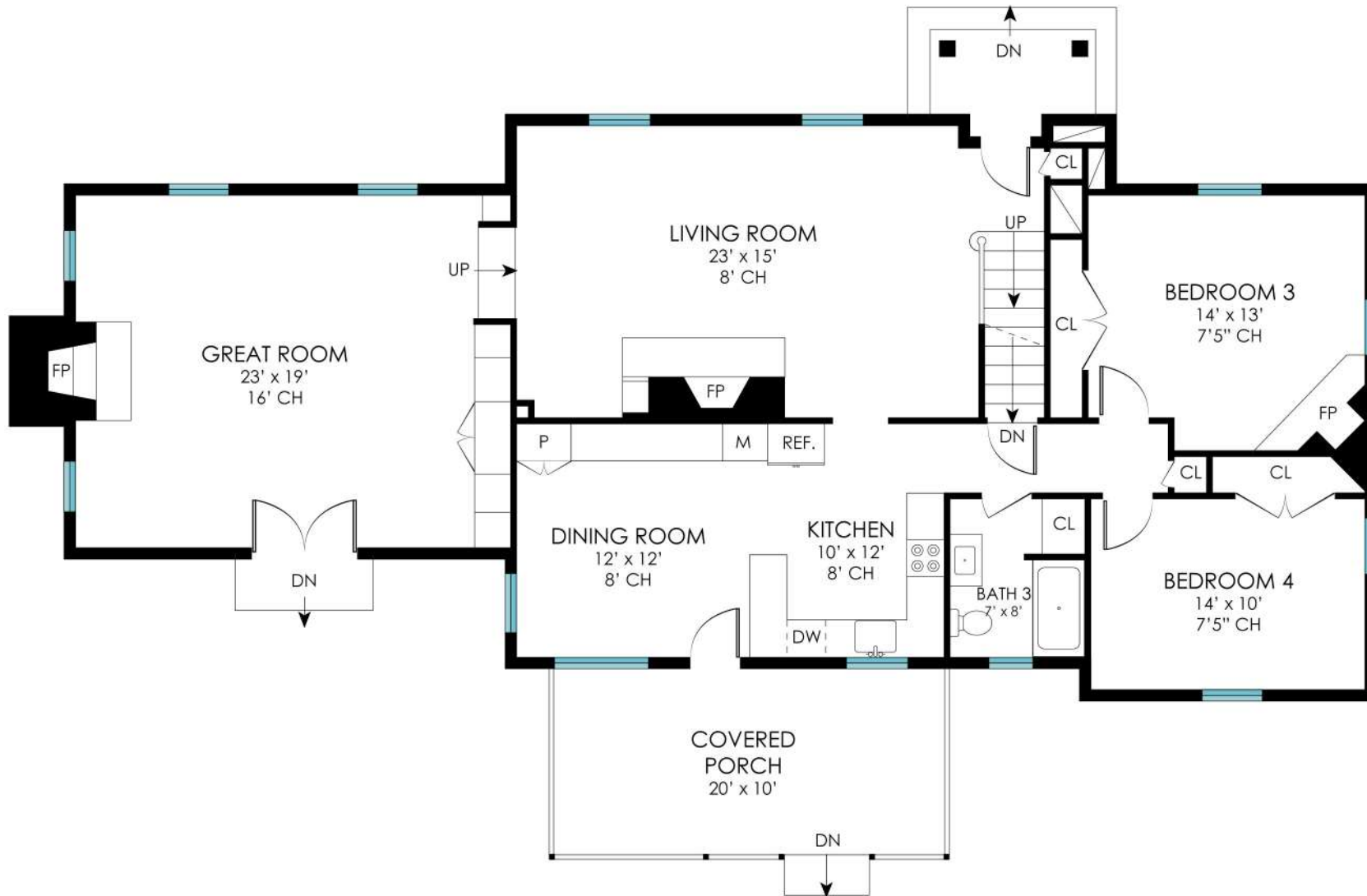




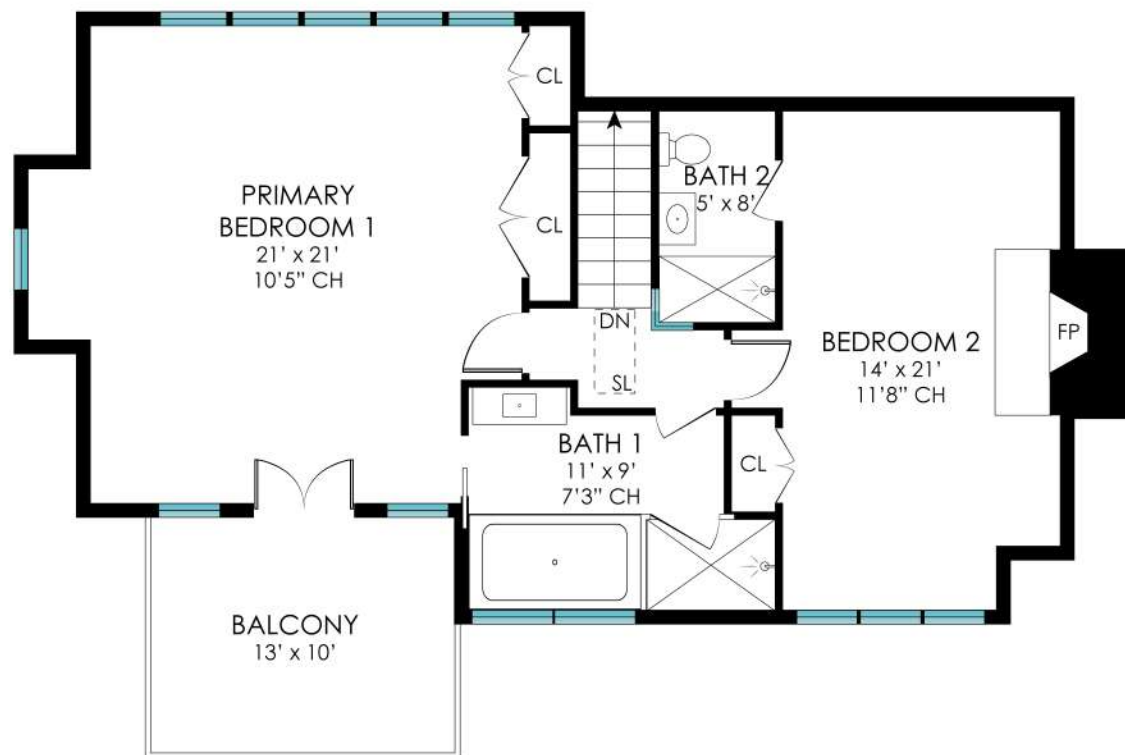
651 SAGAPONACK ROAD
SAGAPONACK, NY



1ST FLOOR - 1664 SF



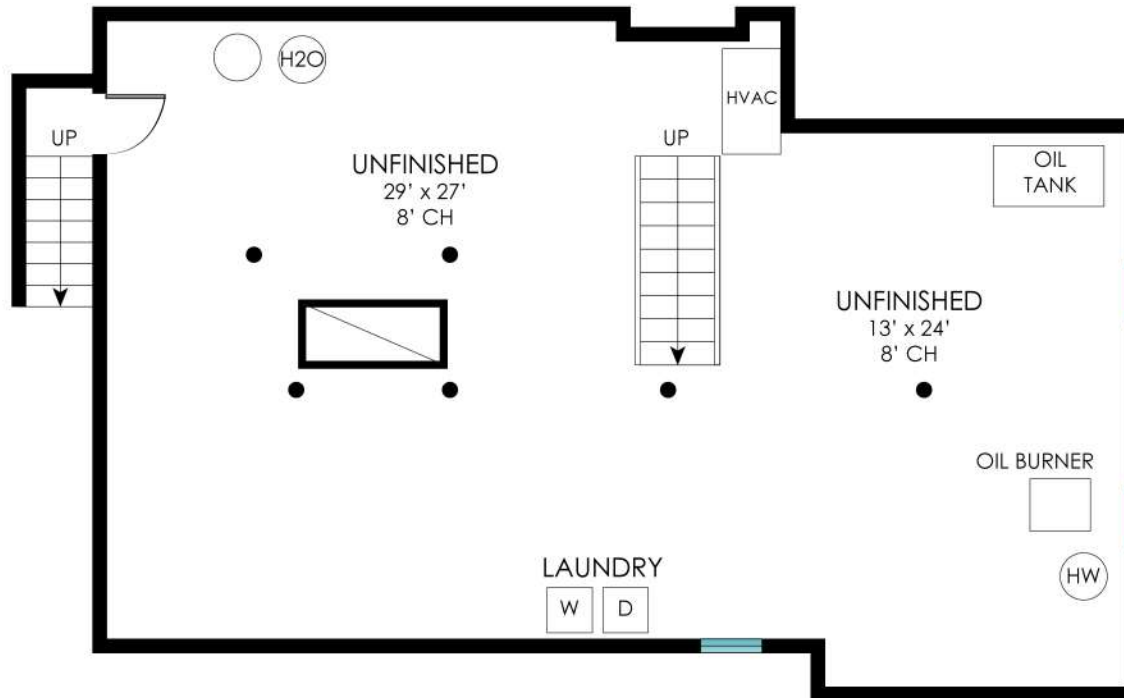
651 SAGAPONACK ROAD
SAGAPONACK, NY



2ND FLOOR - 936 SF



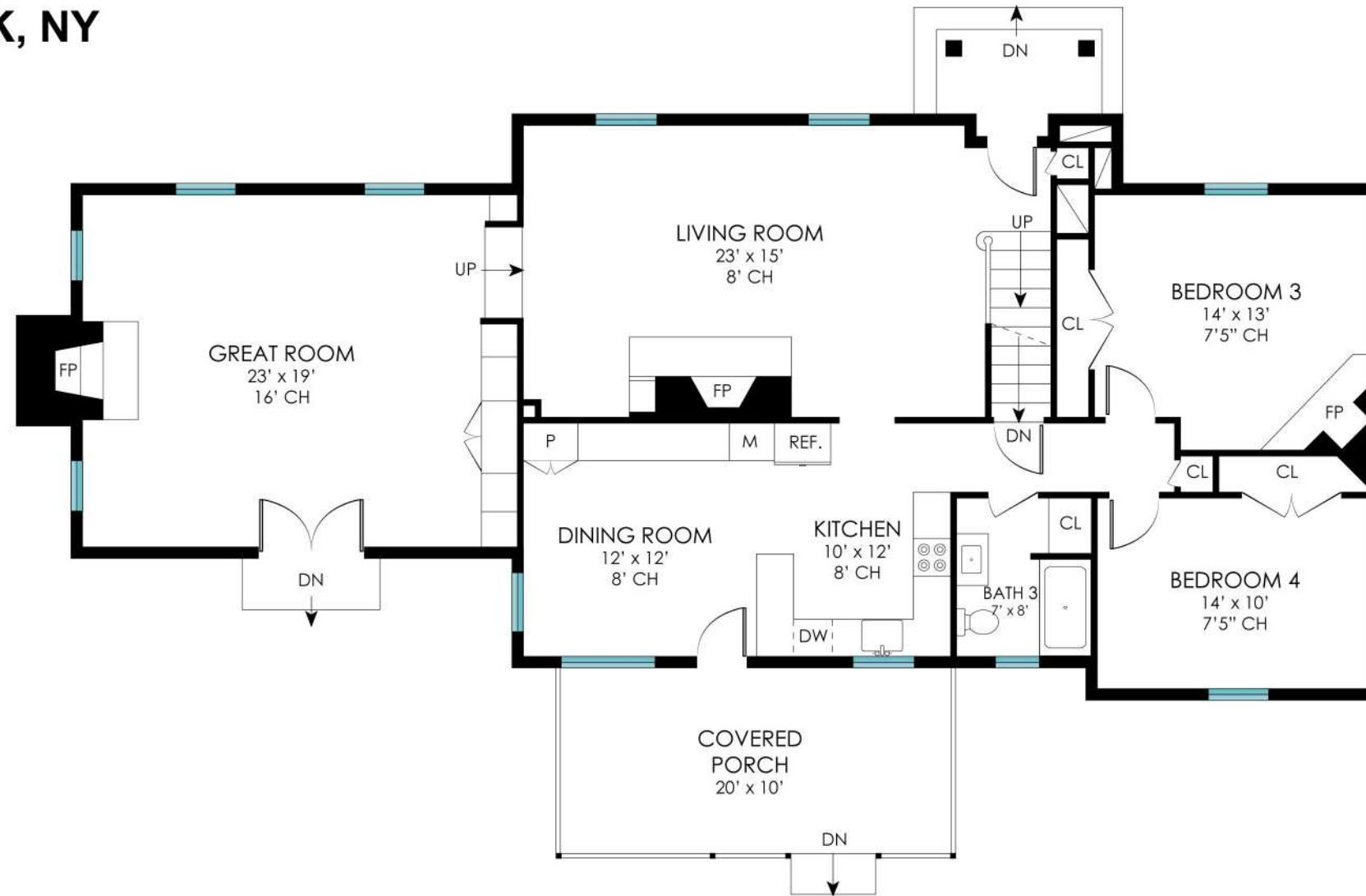
651 SAGAPONACK ROAD
SAGAPONACK, NY



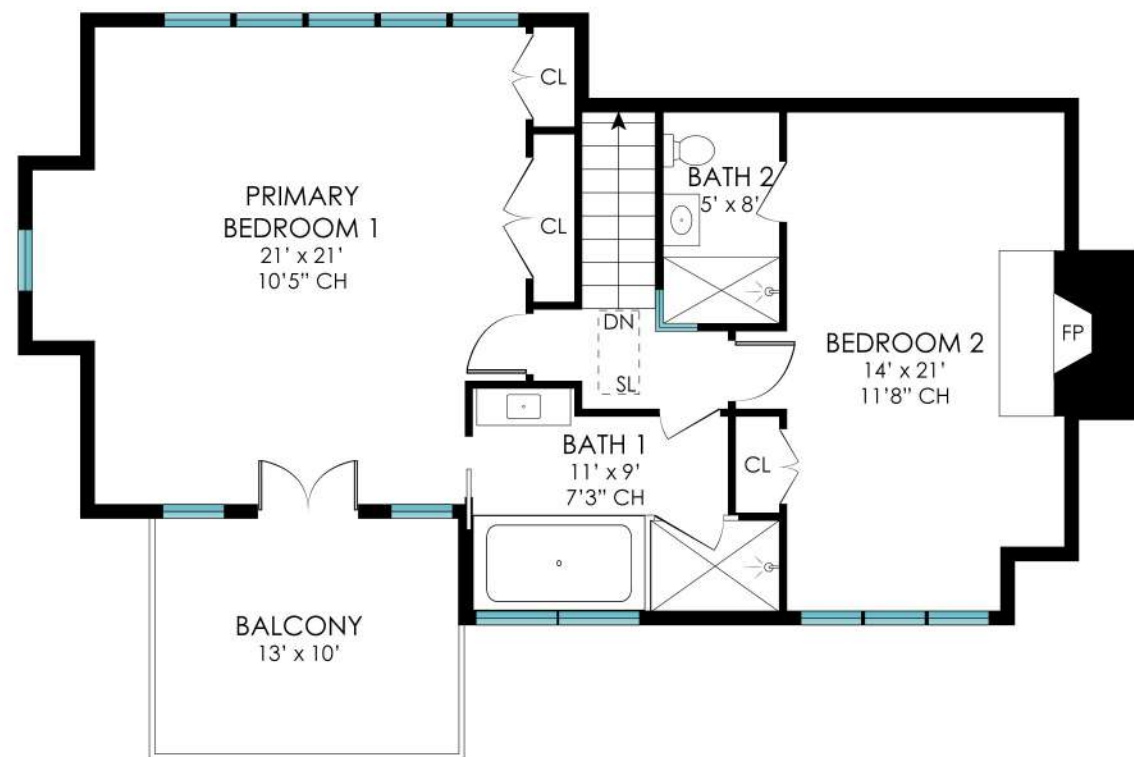
BASEMENT - 1175 SF



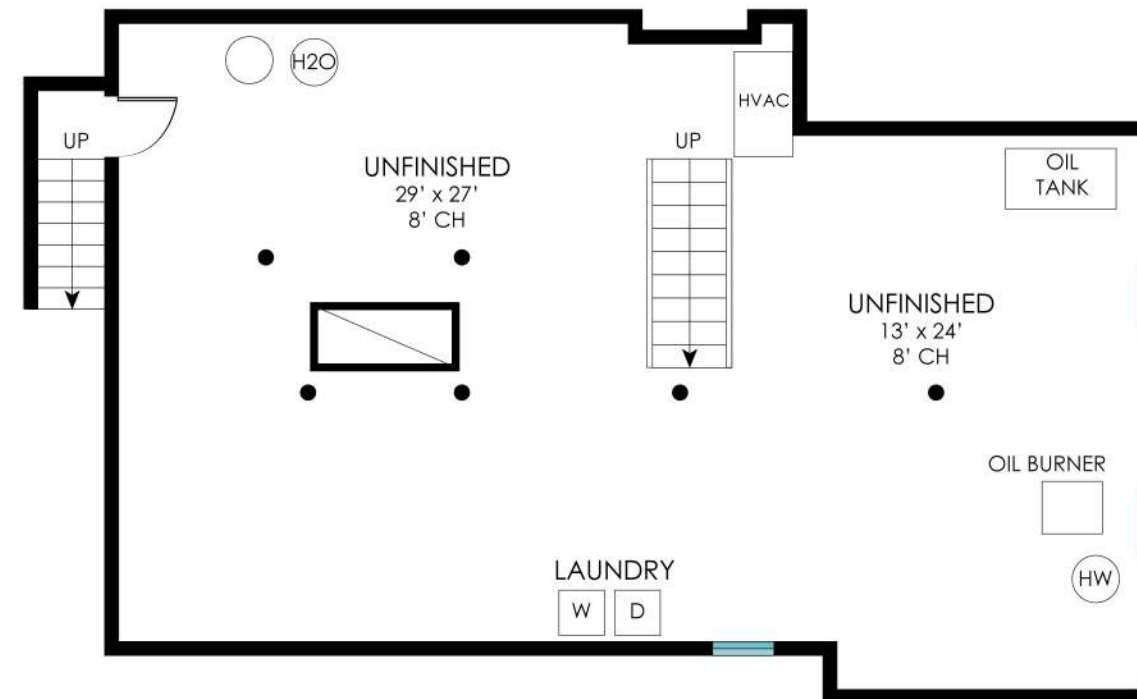
**651 SAGAPONACK ROAD
SAGAPONACK, NY**



1ST FLOOR



2ND FLOOR

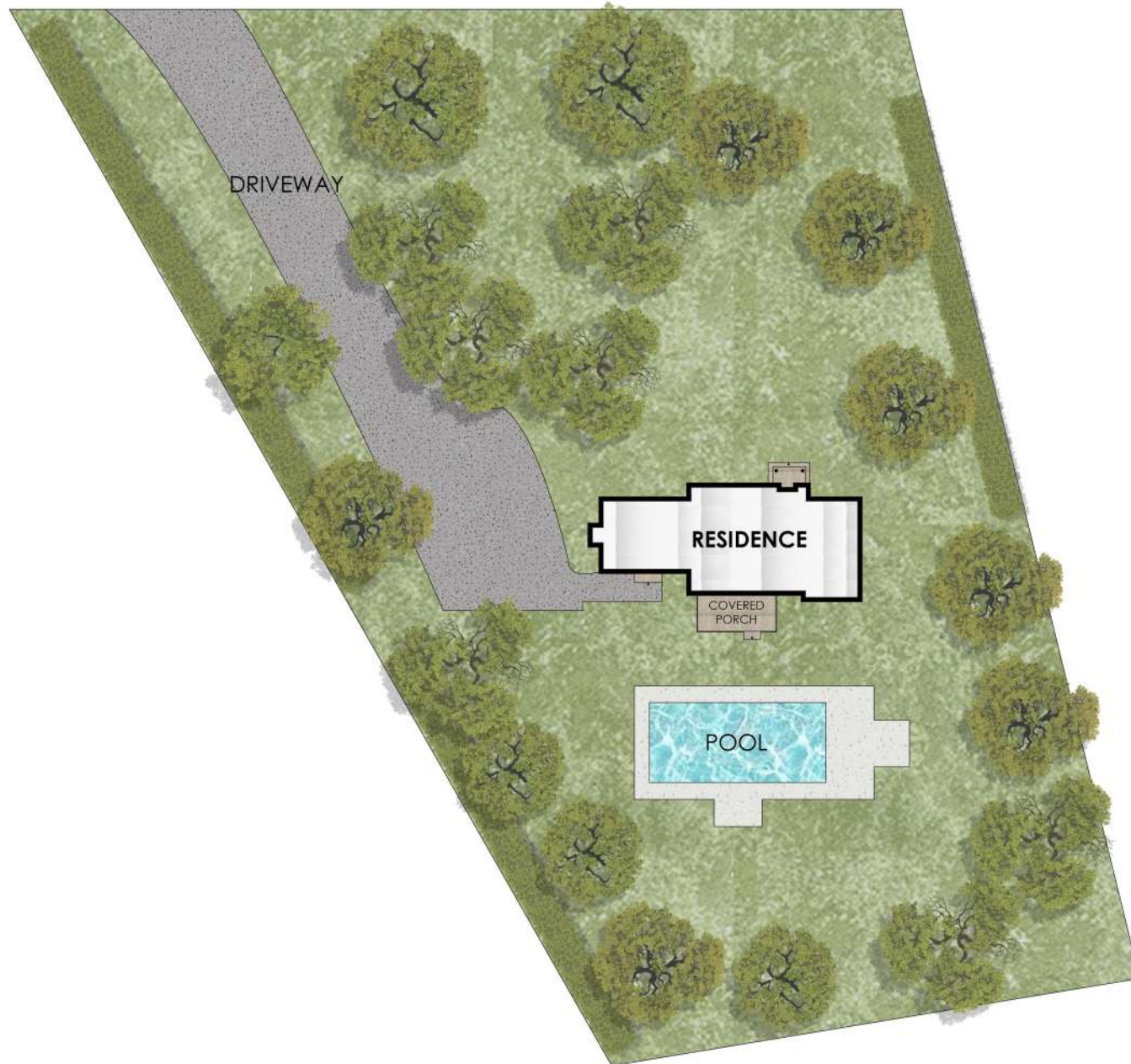


BASEMENT

**1ST FLOOR - 1664 SF
2ND FLOOR - 936 SF
BASEMENT - 1175 SF**



651 SAGAPONACK ROAD
SAGAPONACK, NY



SITE PLAN

Plans shown are for presentation purposes only and are not part of any legal document or title. They are subject to errors, omissions, inaccuracies and should not be used as a sole and accurate reference. Interested parties should make their own inquiries using independent sources.