

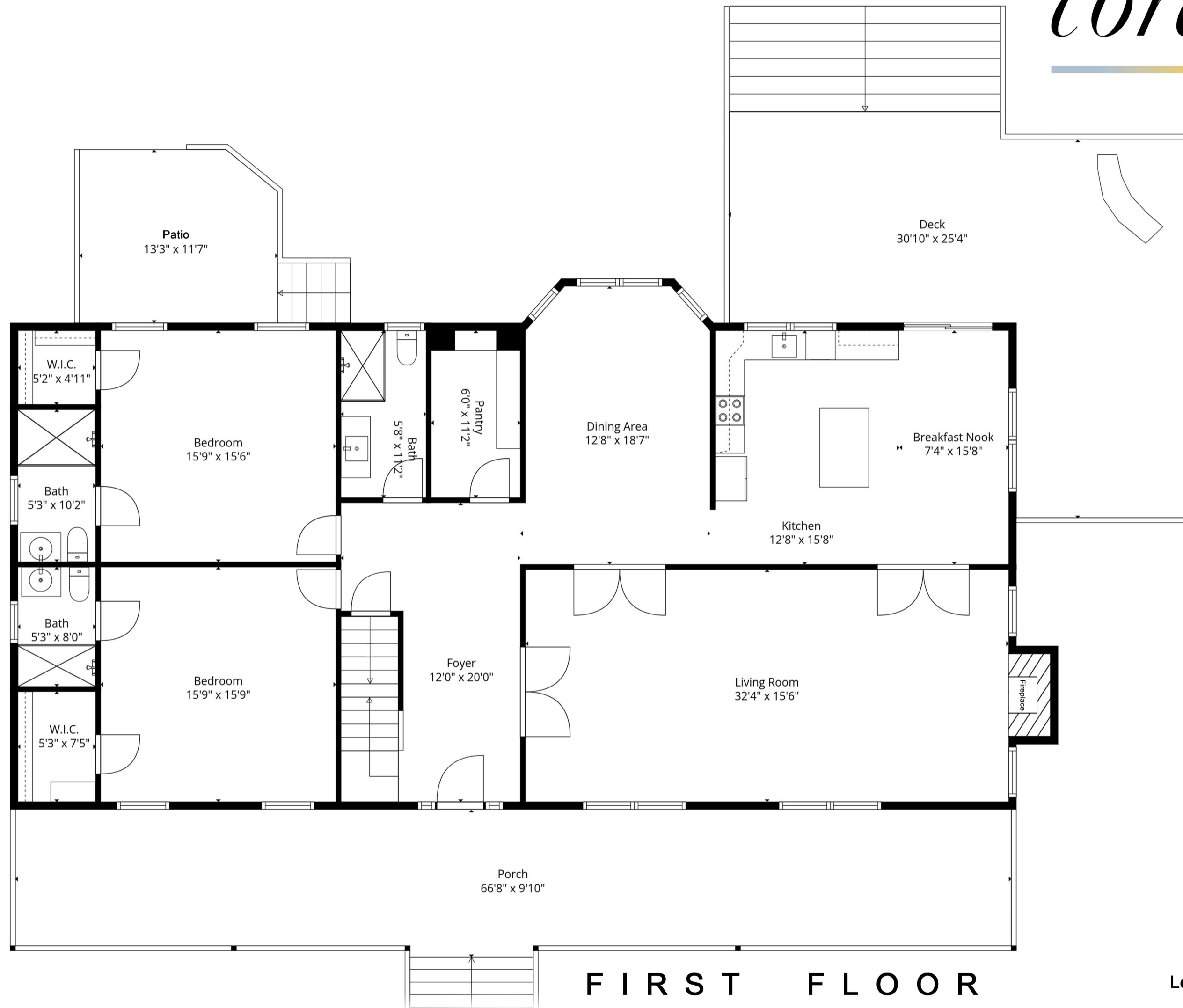
- 1st Floor: 2,121 Sq Ft
- Garage: 486 Sq Ft
- 2nd Floor: 2,041 Sq Ft
- Lower Level: 1,484 Sq Ft
- Utility: 94 Sq Ft
- Deck: 712 Sq Ft
- Porch: 614 Sq Ft

Floor plan, furniture, and fixture measurements and dimensions are approximate and are for illustrative purposes only. The representative gives no guarantee, warranty or representation as to the accuracy and completeness of the floor plan.

9 Red Creek Circle Hampton Bays, NY 11946



corcoran

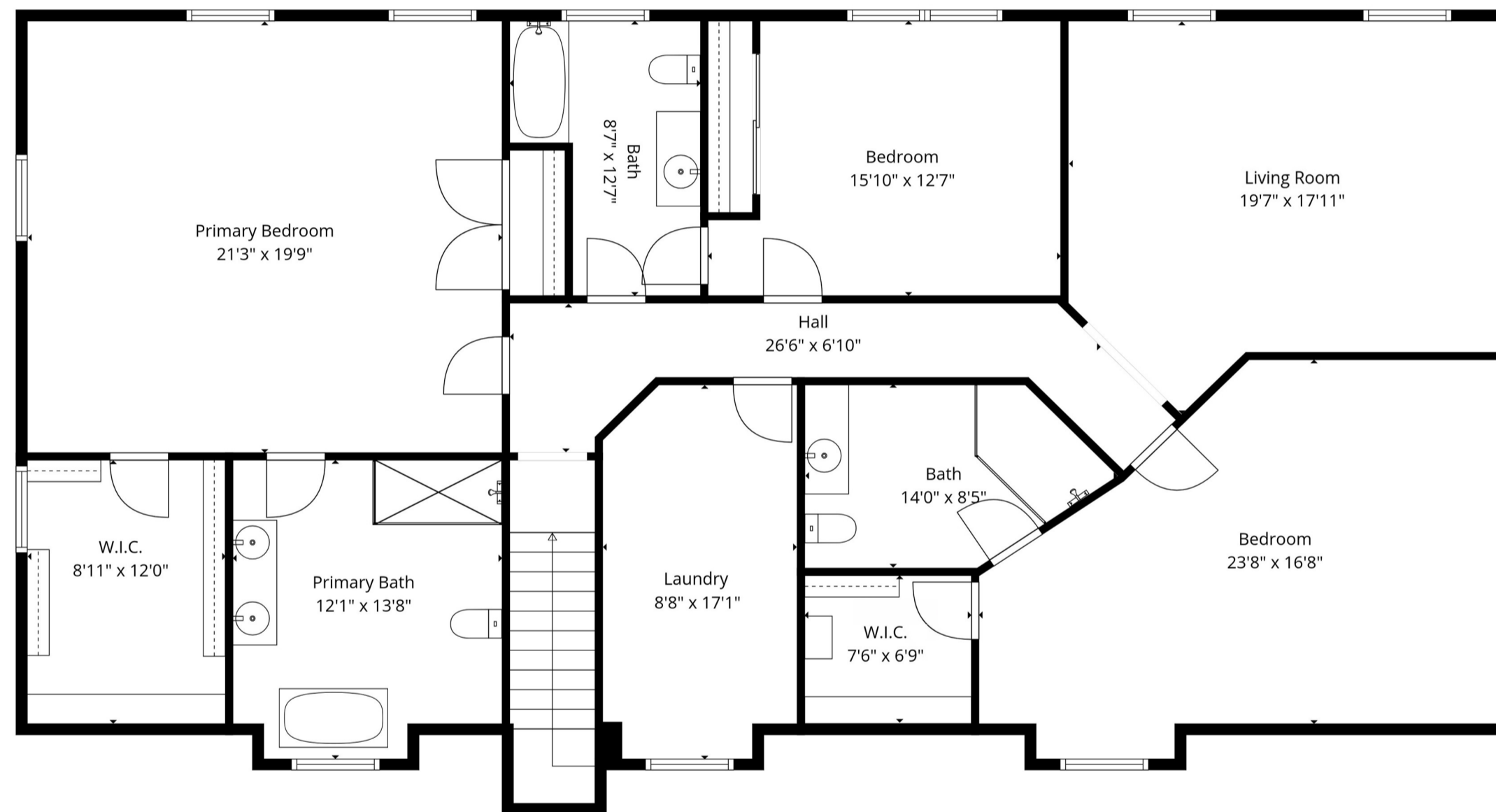
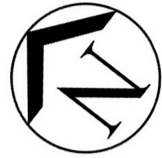


FIRST FLOOR

1st Floor: 2,121 Sq Ft
 Garage: 486 Sq Ft
 2nd Floor: 2,041 Sq Ft
 Lower Level: 1,484 Sq Ft
 Utility: 94 Sq Ft
 Deck: 712 Sq Ft
 Porch: 614 Sq Ft

Floor plan, furniture, and fixture measurements and dimensions are approximate and are for illustrative purposes only. The representative gives no guarantee, warranty or representation as to the accuracy and completeness of the floor plan.

9 Red Creek Circle Hampton Bays, NY 11946



S E C O N D F L O O R

1st Floor:	2,121 Sq Ft
Garage:	486 Sq Ft
2nd Floor:	2,041 Sq Ft
Lower Level:	1,484 Sq Ft
Utility:	94 Sq Ft
Deck:	712 Sq Ft
Porch:	614 Sq Ft

Floor plan, furniture, and fixture measurements and dimensions are approximate and are for illustrative purposes only. The representative gives no guarantee, warranty or representation as to the accuracy and completeness of the floor plan.



corcoran



L O W E R L E V E L

1st Floor:	2,121 Sq Ft
Garage:	486 Sq Ft
2nd Floor:	2,041 Sq Ft
Lower Level:	1,484 Sq Ft
Utility:	94 Sq Ft
Deck:	712 Sq Ft
Porch:	614 Sq Ft

Floor plan, furniture, and fixture measurements and dimensions are approximate and are for illustrative purposes only. The representative gives no guarantee, warranty or representation as to the accuracy and completeness of the floor plan.

9 Red Creek Circle Hampton Bays, NY 11946