



FIRST FLOOR INT: 4000 ft²
 FIRST FLOOR OUT: 2000 ft²
 GARAGE: 748 ft²
 POOL HOUSE: 800 ft²
 POOL: 800 ft²

cale in feet. Indicative only. Dimensions are approximate. All information contained herein is gathered from sources we believe to be reliable. However, we cannot guarantee its accuracy and interested persons should rely on their own inquiries .

179 Davids Lane, Water Mill

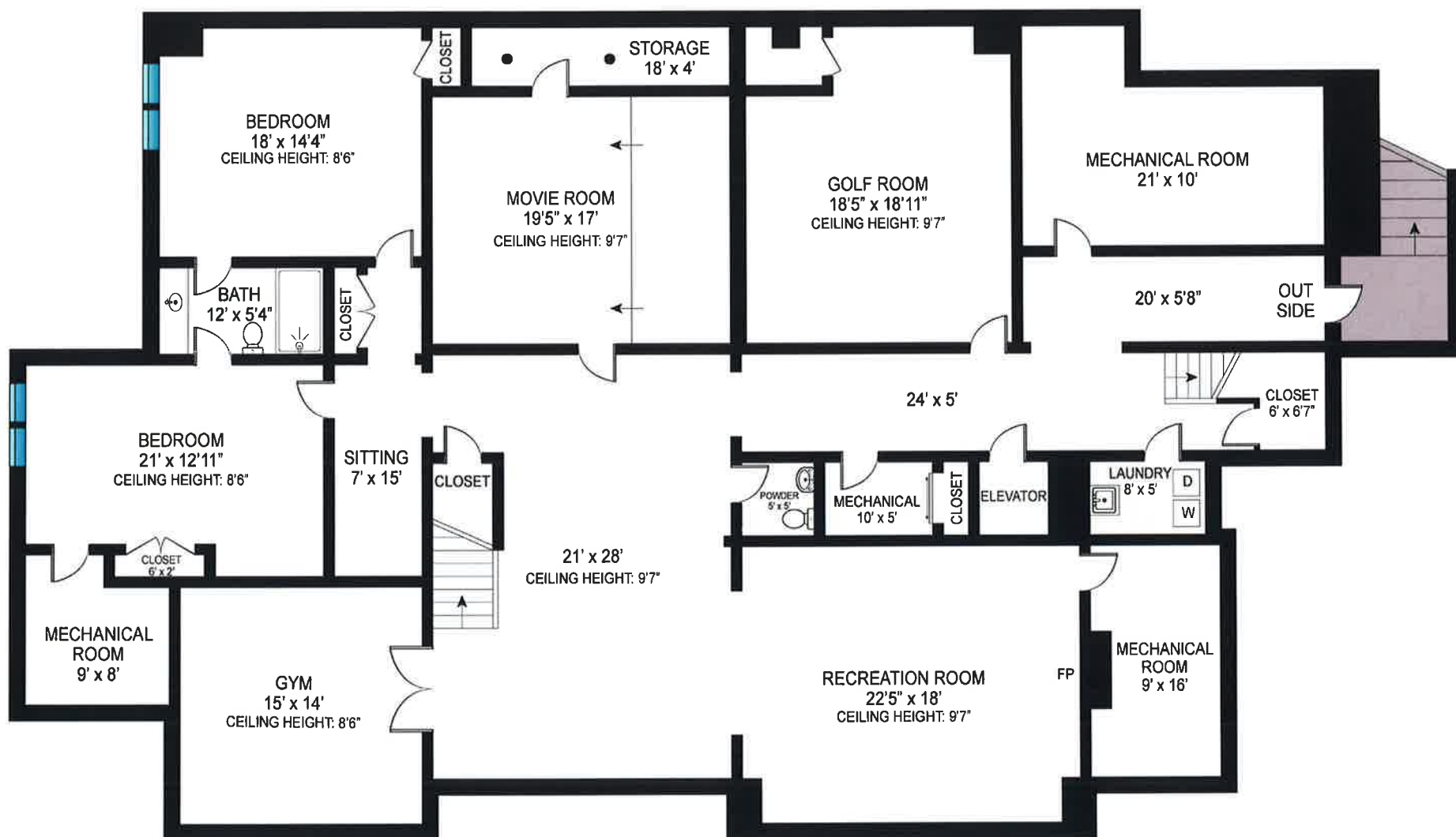


SECOND FLOOR

SECOND FLOOR INT: 4500 ft²

cale in feet. Indicative only. Dimensions are approximate. All information contained herein is gathered from sources we believe to be reliable. However, we cannot guarantee its accuracy and interested persons should rely on their own inquiries.

179 Davids Lane, Water Mill

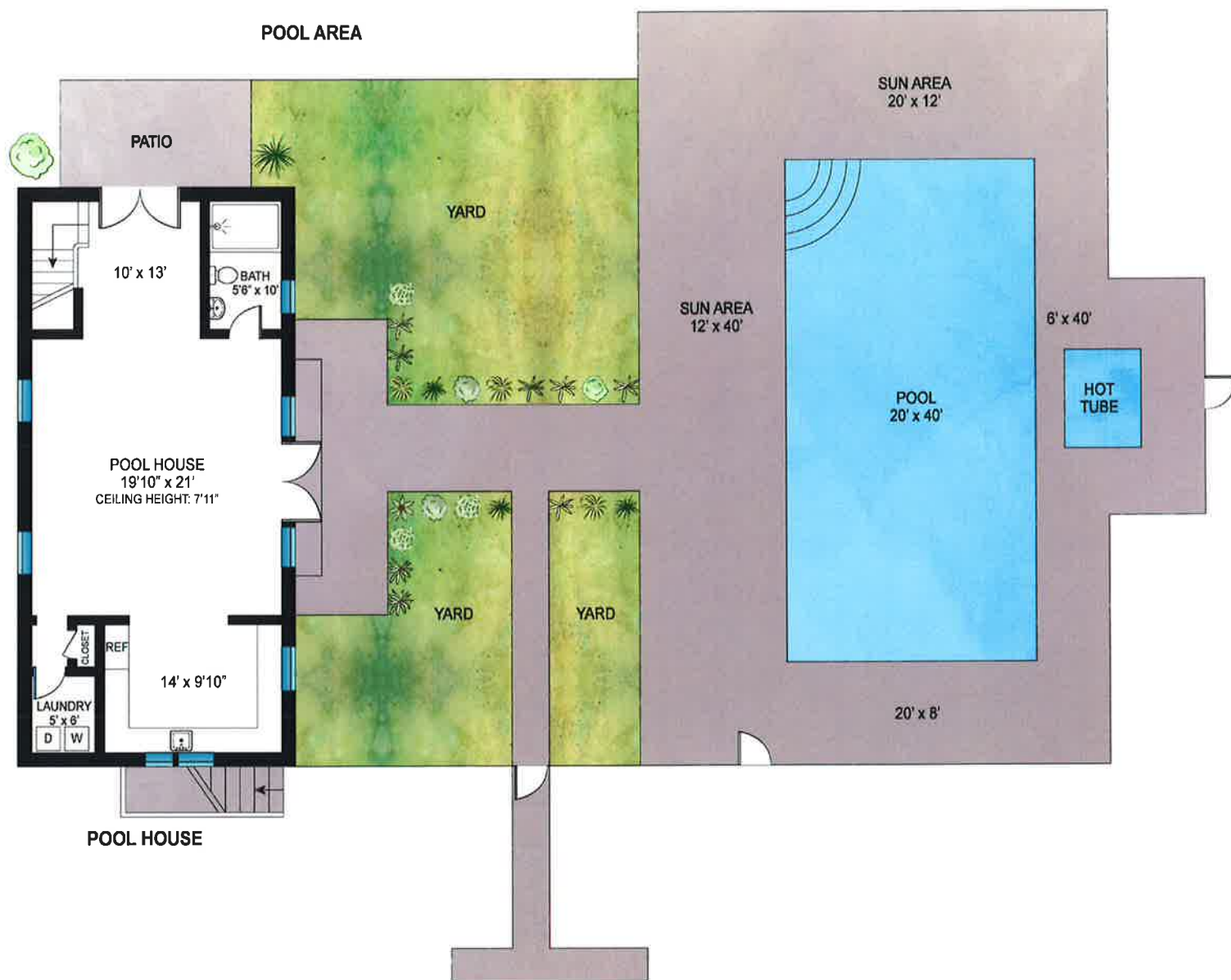


BASEMENT

BASEMENT: 3800 ft²

cale in feet. Indicative only. Dimensions are approximate. All information contained herein is gathered from sources we believe to be reliable. However, we cannot guarantee its accuracy and interested persons should rely on their own inquiries .

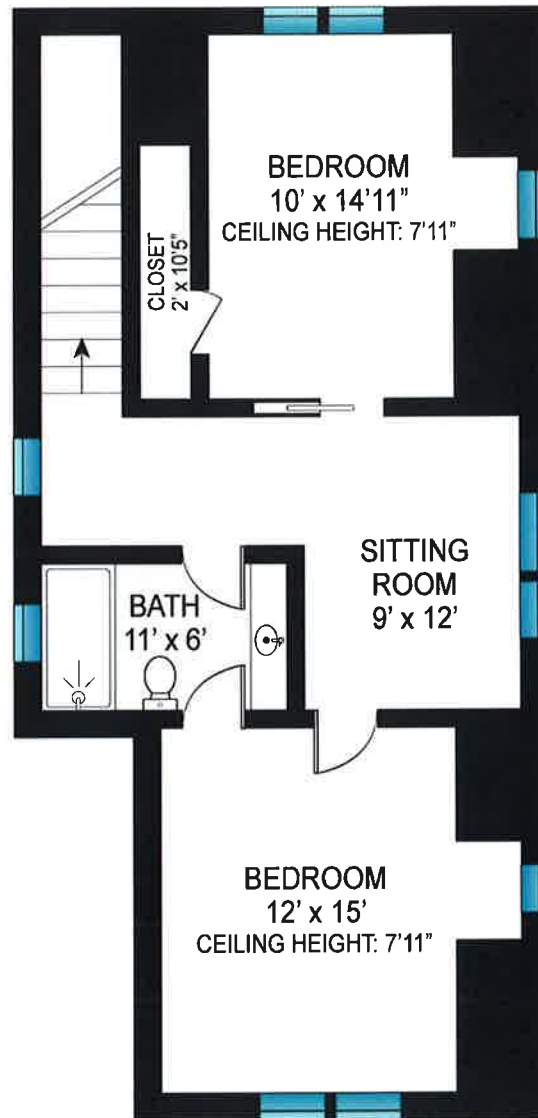
179 Davids Lane, Water Mill



POOL HOUSE: 800 ft²
POOL: 800 ft²

cale in feet. Indicative only. Dimensions are approximate. All information contained herein is gathered from sources we believe to be reliable. However, we cannot guarantee its accuracy and interested persons should rely on their own inquiries.

179 Davids Lane, Water Mill

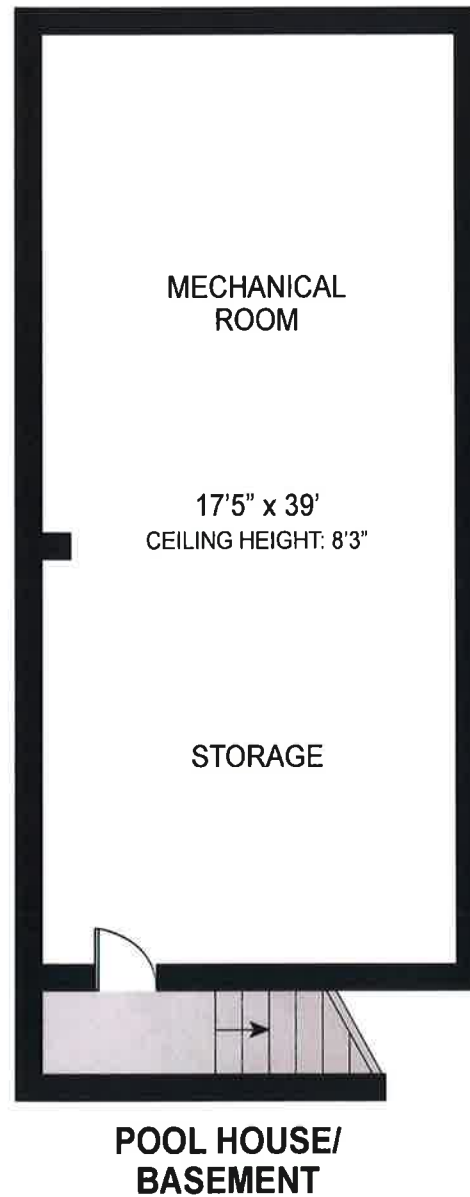


**POOL HOUSE/
SECOND FLOOR**

POOL HOUSE/SECOND FLOOR: 600 ft²

scale in feet. Indicative only. Dimensions are approximate. All information contained herein is gathered from sources we believe to be reliable. However, we cannot guarantee its accuracy and interested persons should rely on their own inquiries.

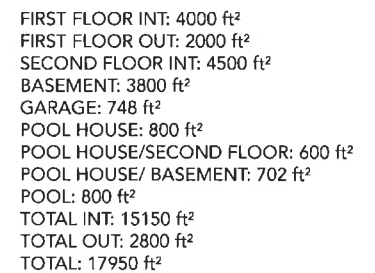
179 Davids Lane, Water Mill



POOL HOUSE/ BASEMENT: 702 ft²

cale in feet. Indicative only. Dimensions are approximate. All information contained herein is gathered from sources we believe to be reliable. However, we cannot guarantee its accuracy and interested persons should rely on their own inquiries.

179 Davids Lane, Water Mill



179 Davids Lane, Water Mill