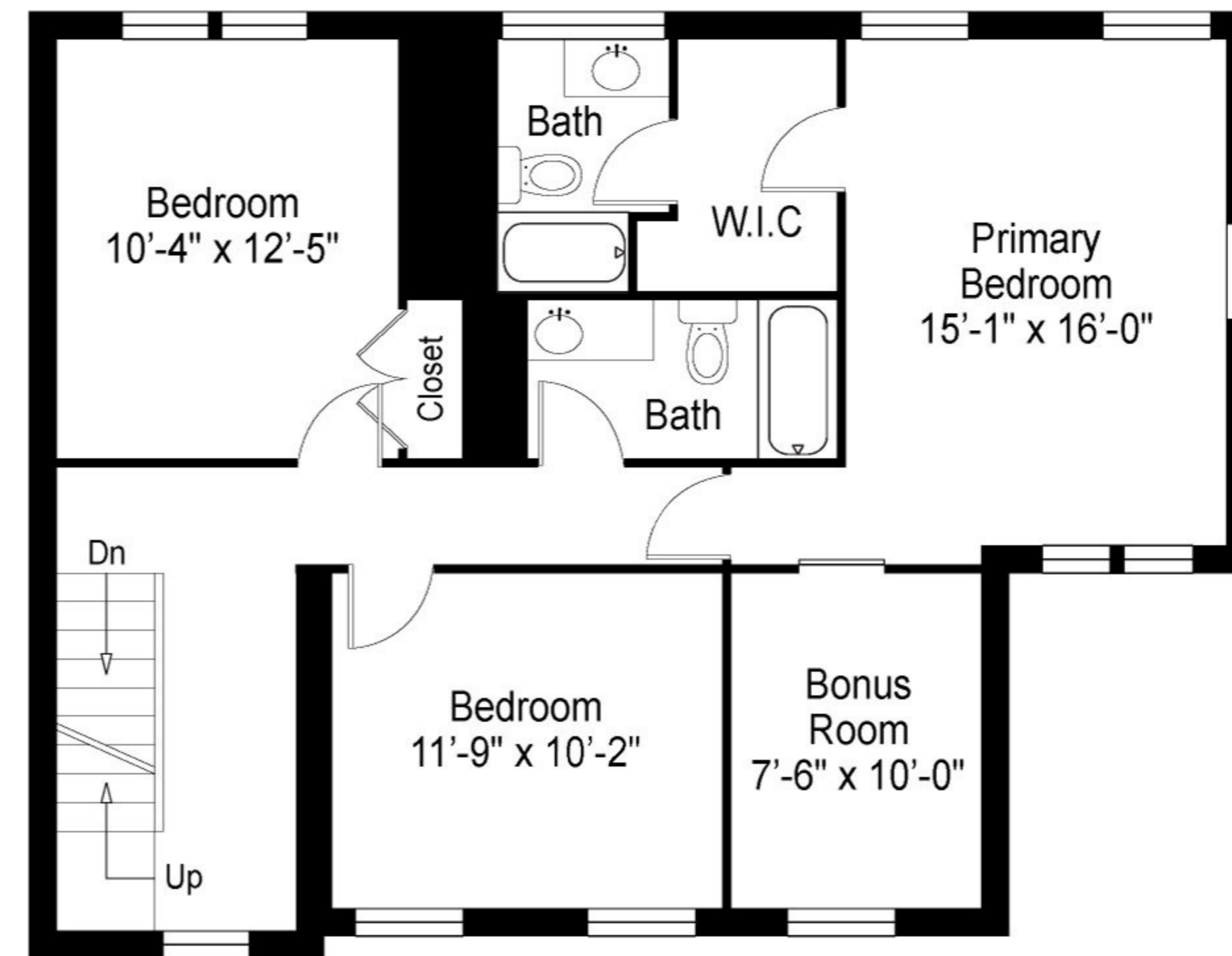
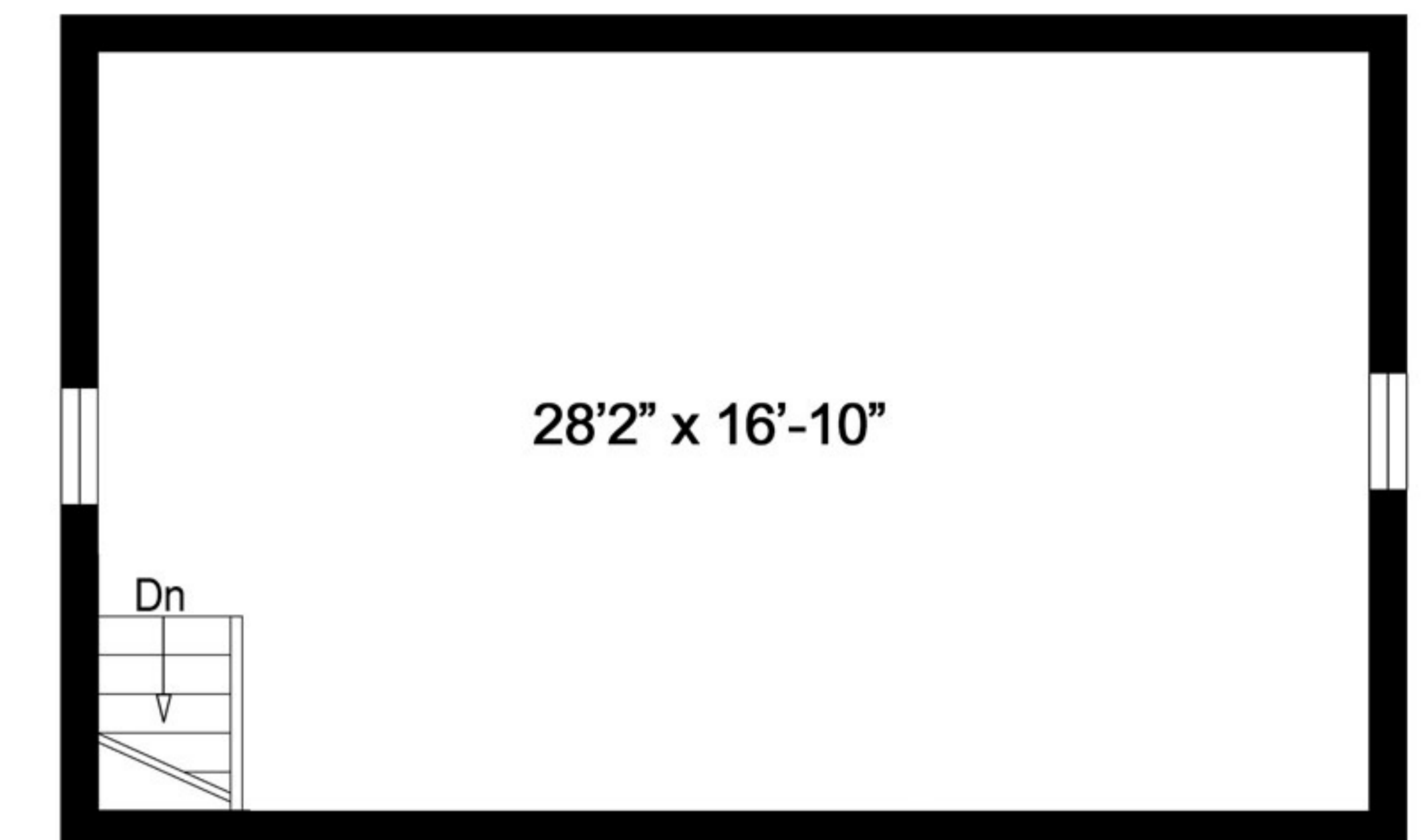


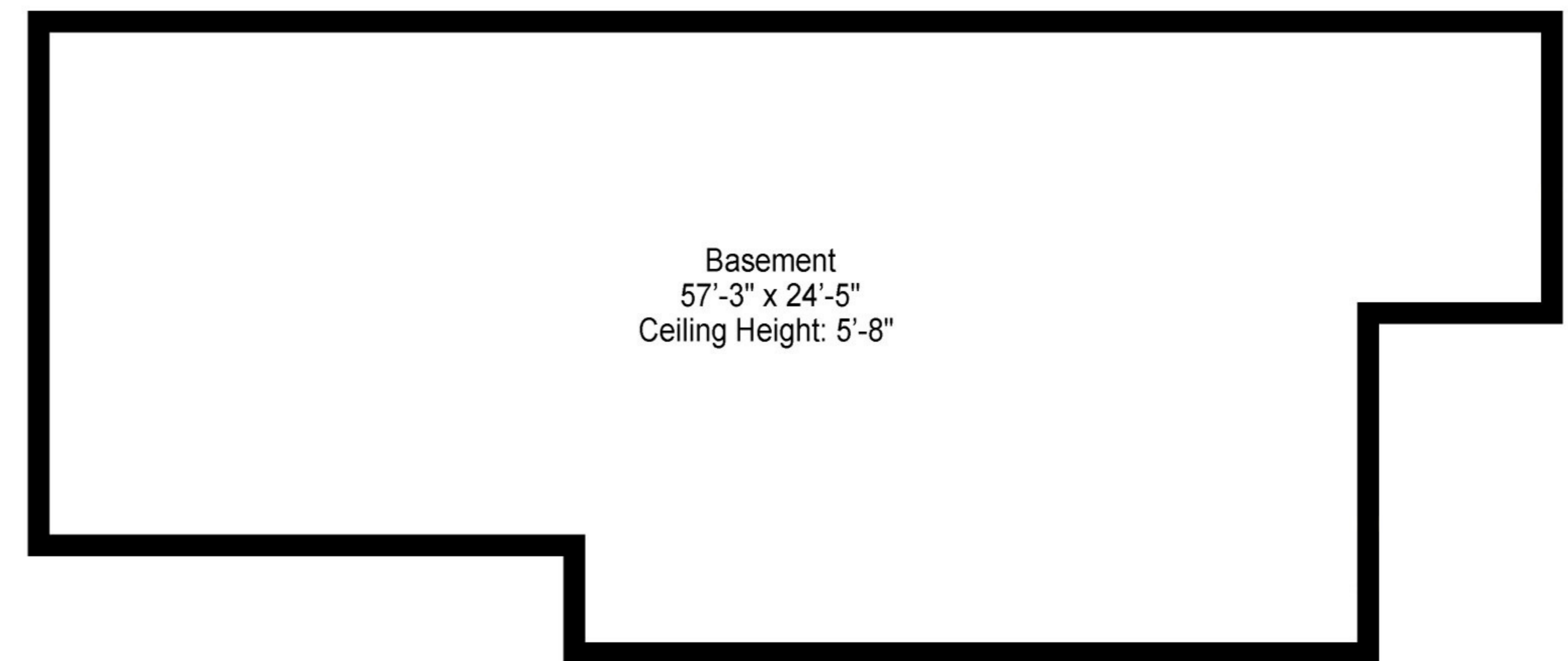
FIRST FLOOR



SECOND FLOOR



ATTIC

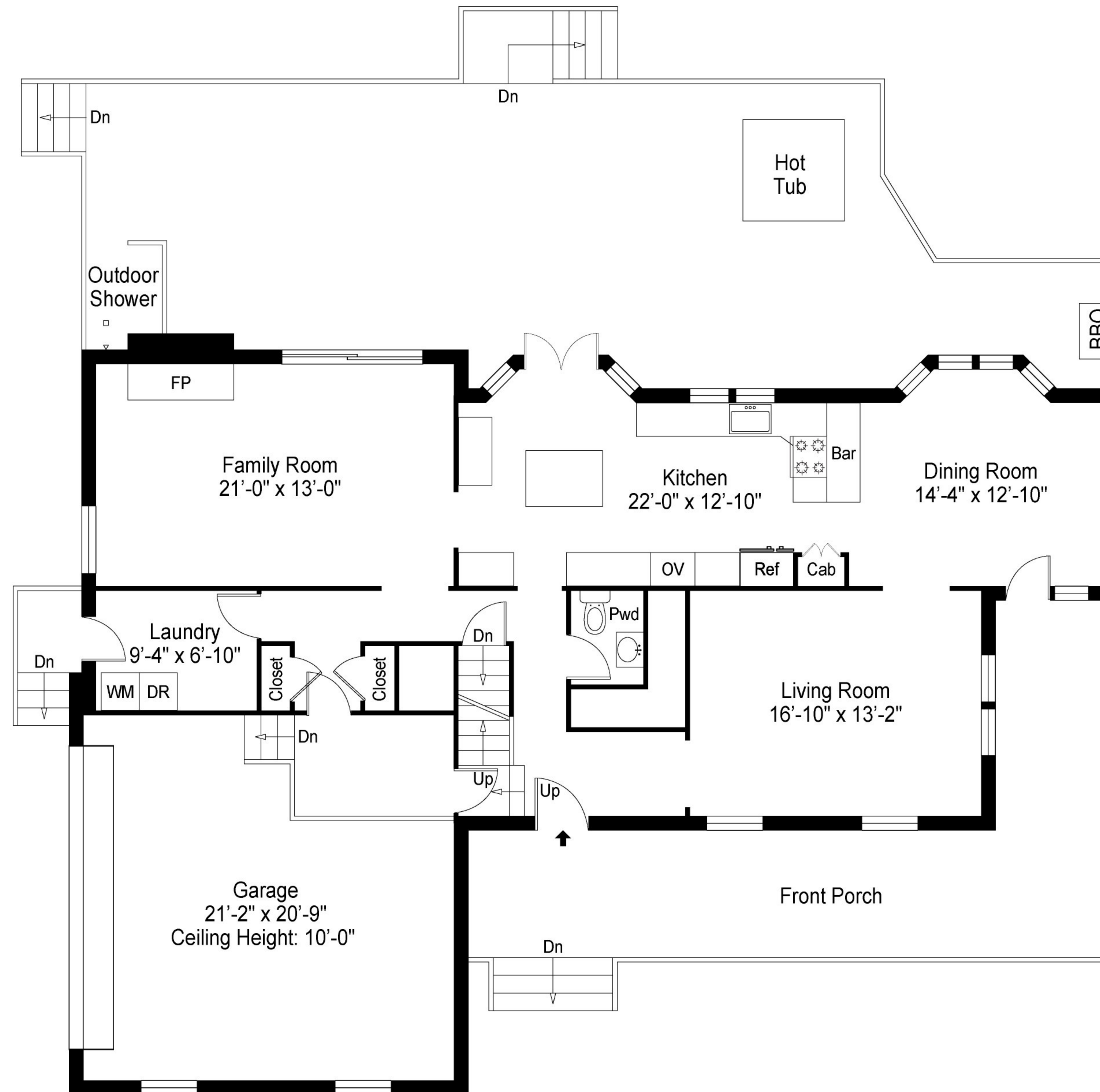


BASEMENT

Floor plan, furniture, and fixture measurements and dimensions are approximate and are for illustrative purposes only. The representative gives no guarantee, warranty or representation as to the accuracy and completeness of the floor plan.

First Floor	1721 Sq.Ft.
Second Floor	867 Sq.Ft.
Attic	497 Sq.Ft.
Basement	1217 Sq.Ft.
<b>Total</b>	<b>4302 Sq.Ft.</b>

45 Coves End Lane, Sag Harbor, NY 11963

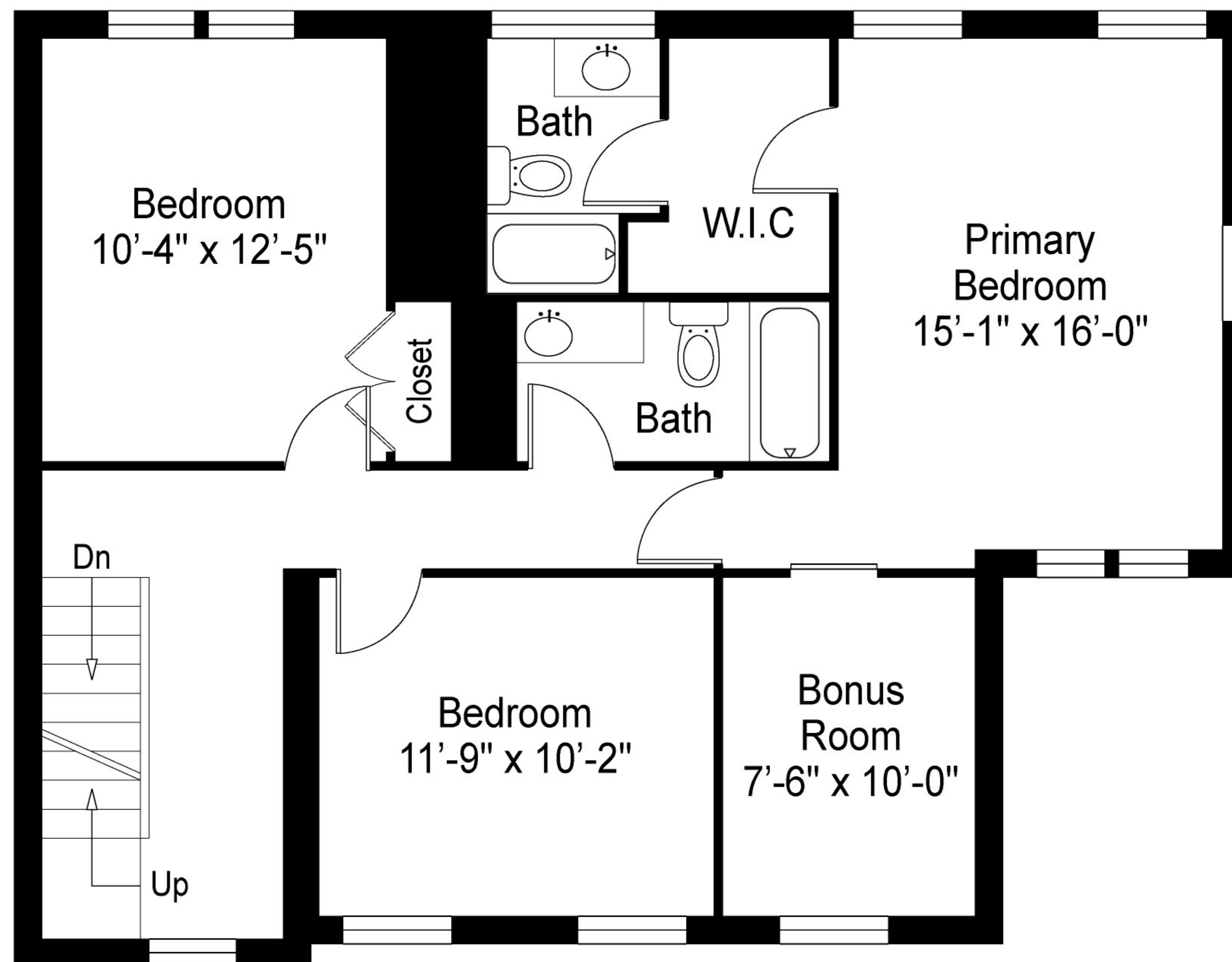


## FIRST FLOOR

Floor plan, furniture, and fixture measurements and dimensions are approximate and are for illustrative purposes only. The representative gives no guarantee, warranty or representation as to the accuracy and completeness of the floor plan.

First Floor	1721 Sq.Ft.
Second Floor	867 Sq.Ft.
Attic	497 Sq.Ft.
Basement	1217 Sq.Ft.
<b>Total</b>	<b>4302 Sq.Ft.</b>

45 Coves End Lane, Sag Harbor, NY 11963

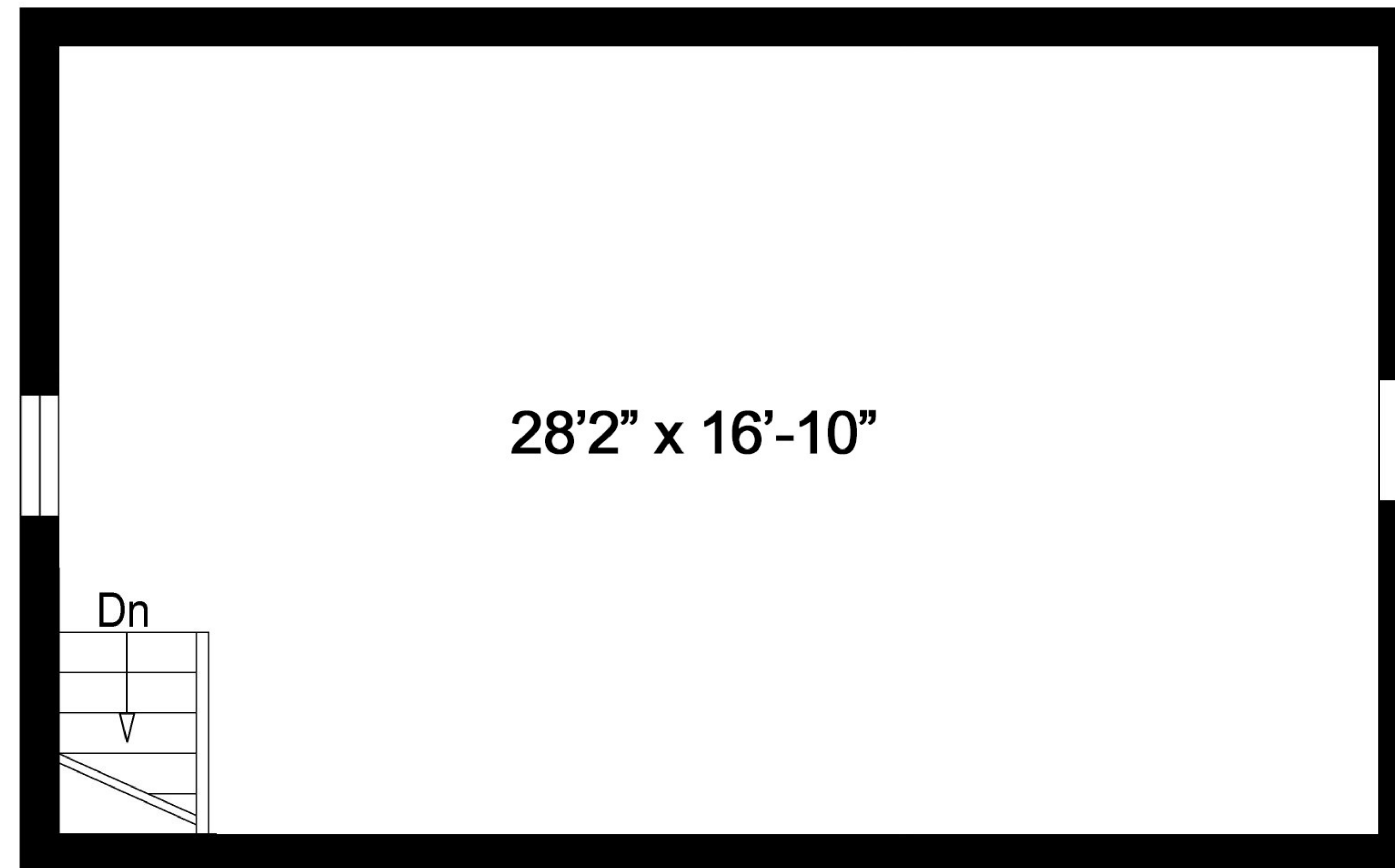


## SECOND FLOOR

Floor plan, furniture, and fixture measurements and dimensions are approximate and are for illustrative purposes only. The representative gives no guarantee, warranty or representation as to the accuracy and completeness of the floor plan.

First Floor	1721 Sq.Ft.
Second Floor	867 Sq.Ft.
Attic	497 Sq.Ft.
Basement	1217 Sq.Ft.
Total	4302 Sq.Ft.

45 Coves End Lane, Sag Harbor, NY 11963

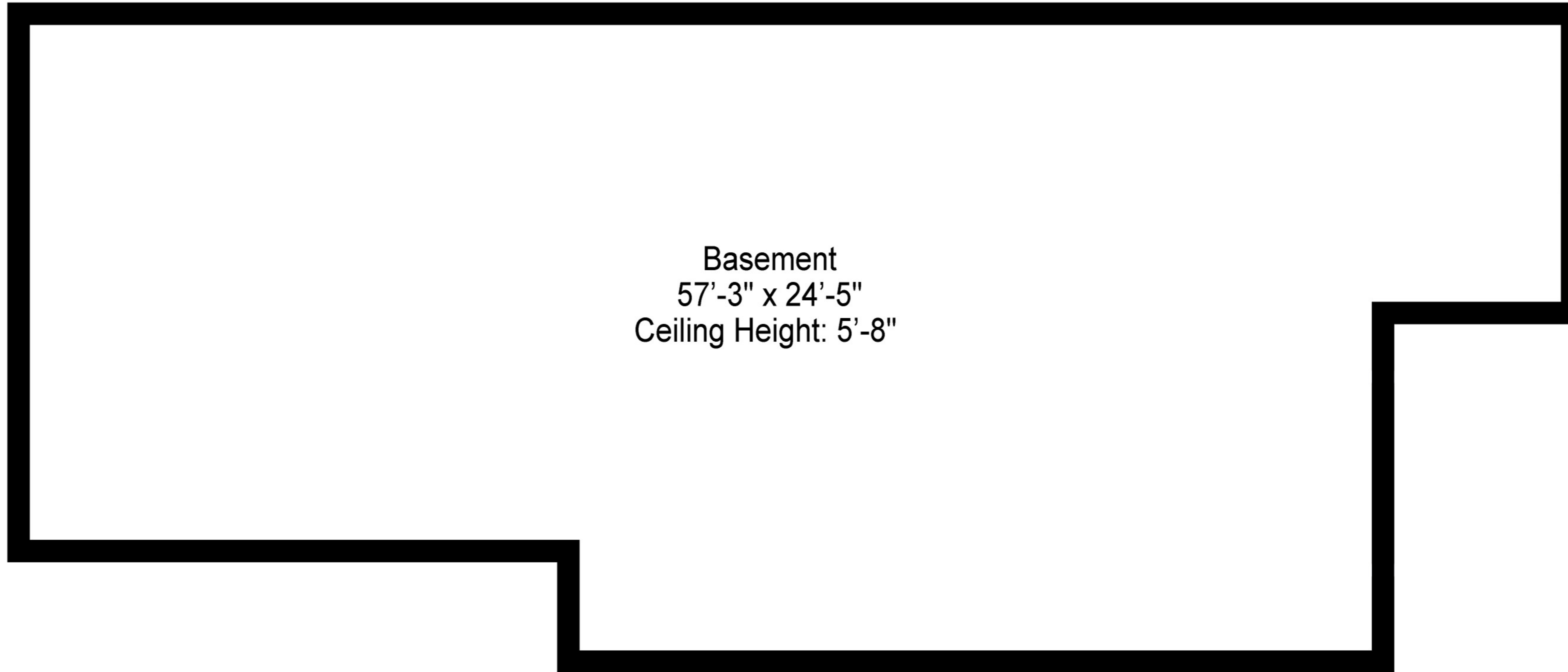


# ATTIC

Floor plan, furniture, and fixture measurements and dimensions are approximate and are for illustrative purposes only.  
The representative gives no guarantee, warranty or representation as to the accuracy and completeness of the floor plan.

First Floor	1721 Sq.Ft.
Second Floor	867 Sq.Ft.
Attic	497 Sq.Ft.
Basement	1217 Sq.Ft.
Total	4302 Sq.Ft.

45 Coves End Lane, Sag Harbor, NY 11963



Basement  
57'-3" x 24'-5"  
Ceiling Height: 5'-8"

# BASEMENT

Floor plan, furniture, and fixture measurements and dimensions are approximate and are for illustrative purposes only.  
The representative gives no guarantee, warranty or representation as to the accuracy and completeness of the floor plan.

First Floor	1721 Sq.Ft.
Second Floor	867 Sq.Ft.
Attic	497 Sq.Ft.
Basement	1217 Sq.Ft.
Total	4302 Sq.Ft.

45 Coves End Lane, Sag Harbor, NY 11963