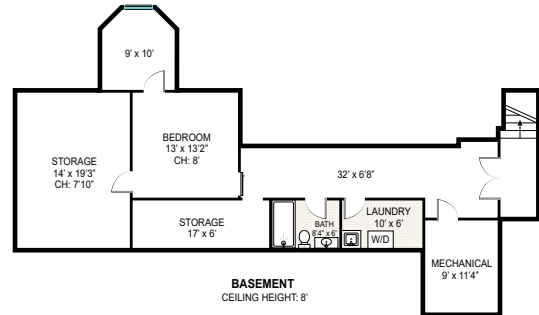


**SECOND FLOOR**  
CEILING HEIGHT: 12'3"



**BASEMENT**  
CEILING HEIGHT: 8'

FIRST FLOOR INT: 1,700 ft<sup>2</sup>  
SECOND FLOOR INT: 1,080 ft<sup>2</sup>  
BASEMENT: 1,064 ft<sup>2</sup>  
TOTAL : 3,844 ft<sup>2</sup>



Scale in feet. Indicative only. Dimensions are approximate. All information contained herein is gathered from sources we believe to be reliable. However, we cannot guarantee its accuracy and interested persons should rely on their own enquiries.

11 Howard Street, Sag Harbor

*corcoran*