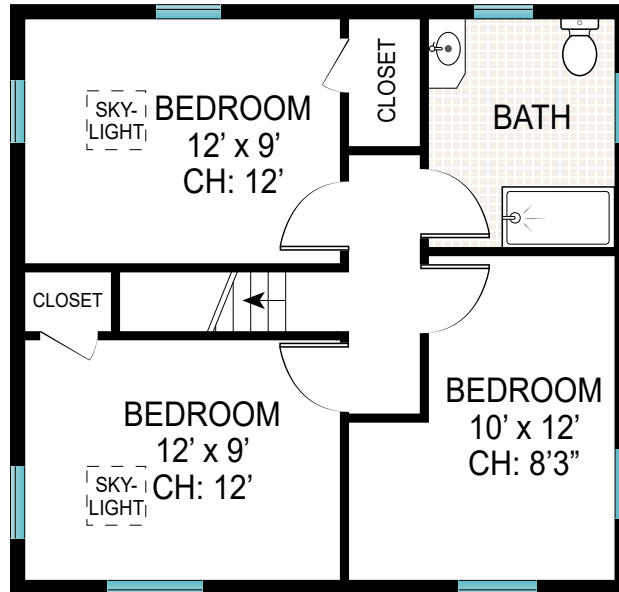


FIRST FLOOR
CEILING HEIGHT: 7'8"

FIRST FLOOR INT: 792 SQFT
FIRST FLOOR OUT: 810 SQFT



Scale in feet. Indicative only. Dimensions are approximate. All information contained herein is gathered from sources we believe to be reliable. However, we cannot guarantee its accuracy and interested persons should rely on their own enquiries.



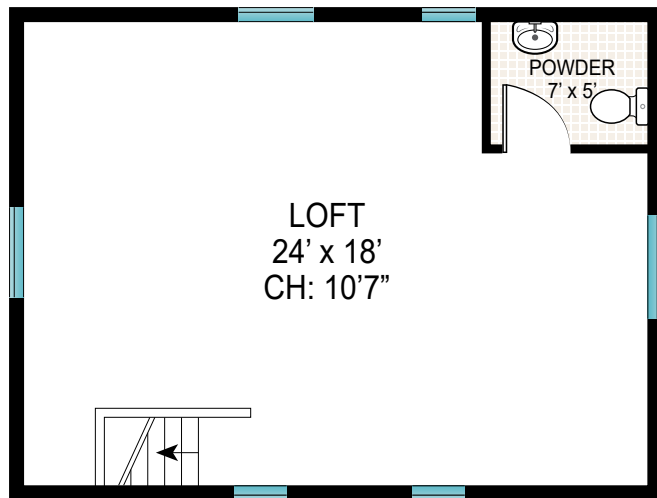
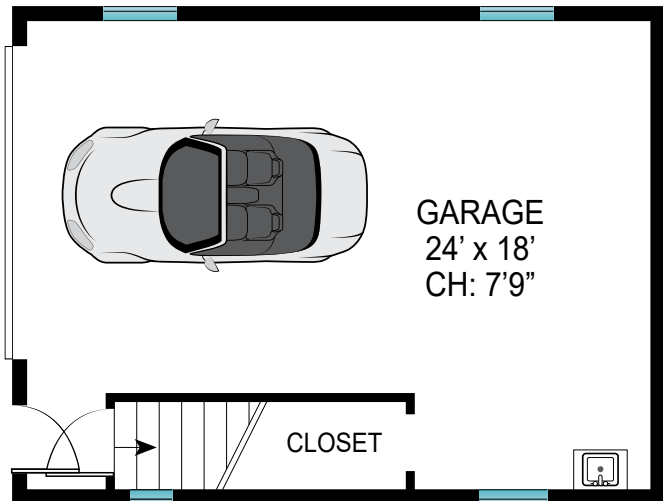
SECOND FLOOR

CEILING HEIGHT: 12'

SECOND FLOOR: 500 SQFT

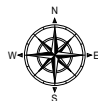


Scale in feet. Indicative only. Dimensions are approximate. All information contained herein is gathered from sources we believe to be reliable. However, we cannot guarantee its accuracy and interested persons should rely on their own enquiries.

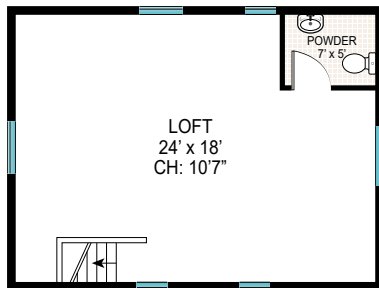


SECOND FLOOR/ LOFT GARAGE

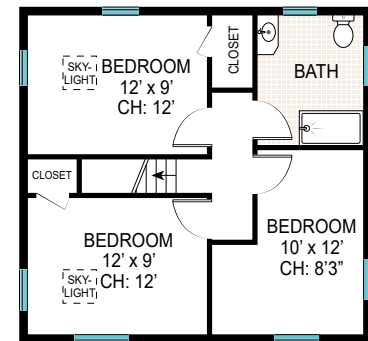
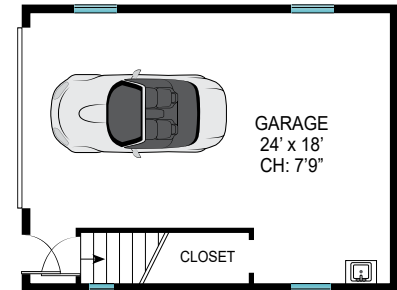
GARAGE: 432 SQFT
LOFT: 432 SQFT



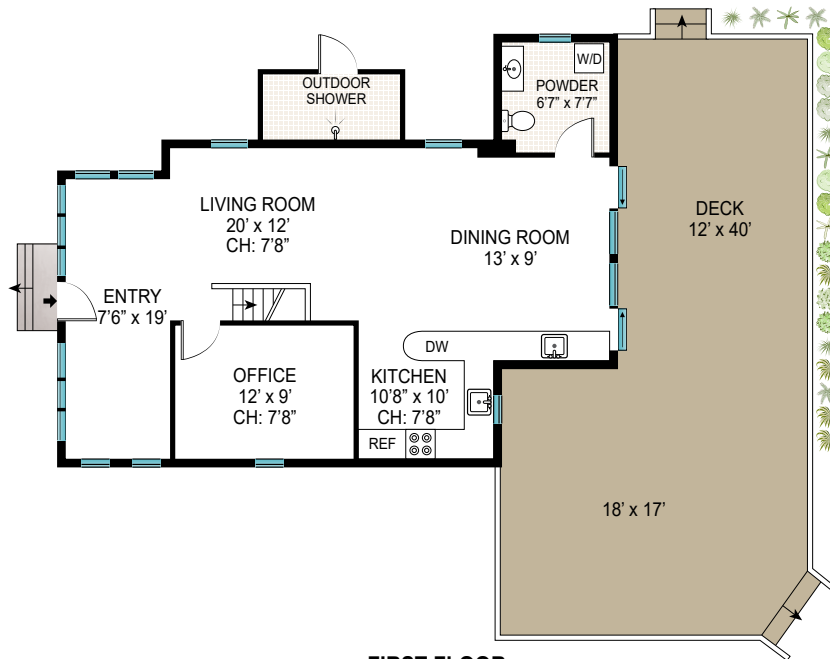
Scale in feet. Indicative only. Dimensions are approximate. All information contained herein is gathered from sources we believe to be reliable. However, we cannot guarantee its accuracy and interested persons should rely on their own enquiries.



**SECOND FLOOR/
LOFT GARAGE**



SECOND FLOOR
CEILING HEIGHT: 12'



FIRST FLOOR
CEILING HEIGHT: 7'8"

FIRST FLOOR INT: 792 SQFT
FIRST FLOOR OUT: 810 SQFT
GARAGE: 432 SQFT
LOFT: 432 SQFT
SECOND FLOOR: 500 SQFT
TOTAL INT: 2,156 SQFT
TOTAL OUT: 810 SQFT
TOTAL: 2,966 SQFT



Scale in feet. Indicative only. Dimensions are approximate. All information contained herein is gathered from sources we believe to be reliable. However, we cannot guarantee its accuracy and interested persons should rely on their own enquiries.