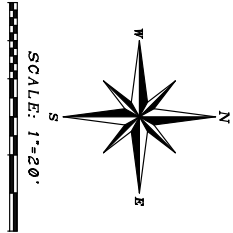
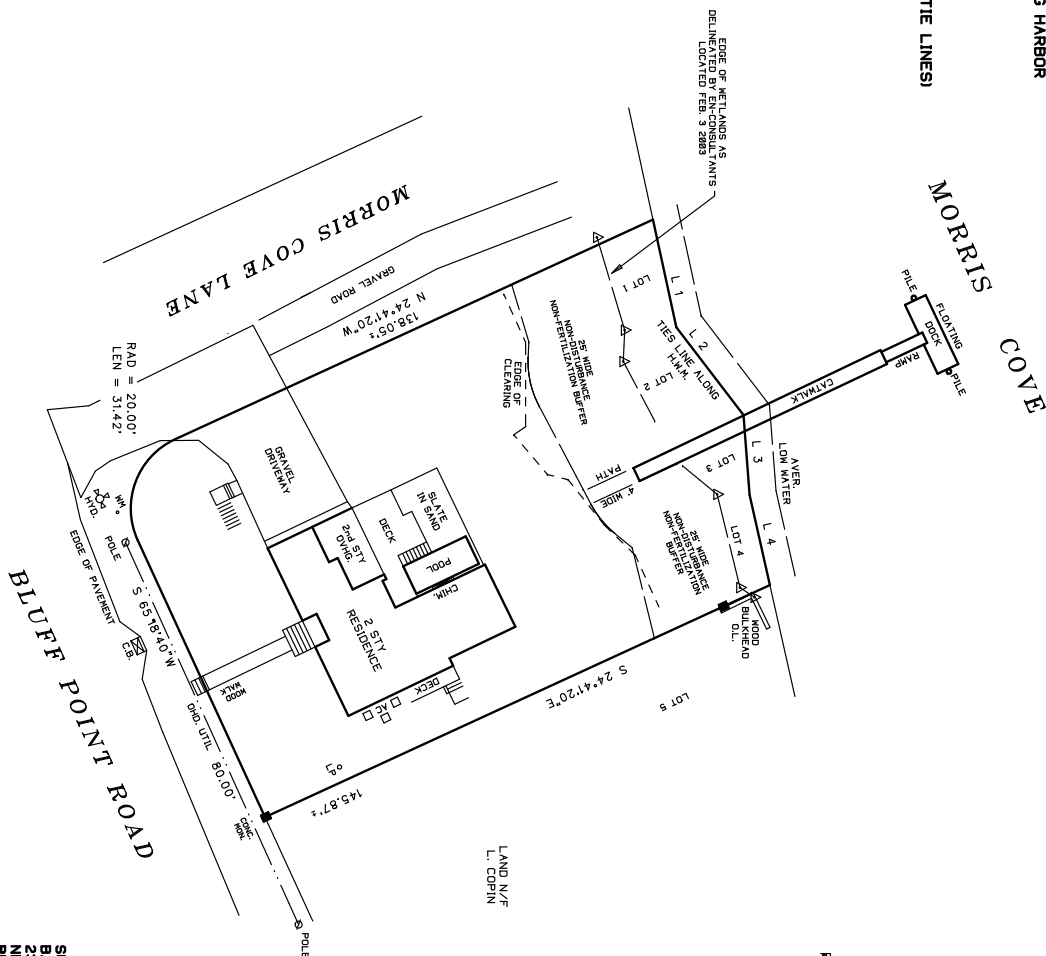


SURVEYED FOR:  
PROPERTY LOCATED IN THE VILLAGE OF SAG HARBOR  
BLUFF POINT SECTION A LOTS 1 THRU 4  
MAP OF PARK NUNAKOMA (ON THE SHORE)  
FILED: JUNE 6, 1996; FILE NO. 658  
TOWN OF SOUTHAMPTON  
SUFFOLK COUNTY, NEW YORK  
S.C.T.M. # 903-004-B1-33  
AREA = 15,248 SF. = 0.3500 ACRES (TO THE TIE LINES)  
SCALE: 1"=20'

NOTE: THE EXISTENCE OF RIGHT OF WAYS,  
WETLANDS AND/OR EASEMENTS OF RECORD  
IF ANY, NOT SHOWN ARE NOT GUARANTEED.



20980-4851 (20980-2B)

SURVEYED BY:  
BARYLSKI LAND SURVEYING  
2228 MAIN ST. P.O. BOX 1382  
NORWICH VILLAGE CONDO  
BROOKHAVEN, NEW YORK  
11792-0132  
FEBRUARY 3, 2003

12-6-2006: REVISED SITE PLAN  
5-1-2007: REVISIONS  
5-19-2007: NYSDOT COV.  
5-11-2007: REVISIONS  
8-22-2007: REVISED SITE PLAN  
10-3-2007: STAKE OUT  
9-29-2008: PROPOSED DOCK  
1-7-2008: PROPOSED DOCK  
6-24-2008: STAKE OUT  
3-4-2010: UPDATE SURVEY