

216 North St, Greenport, NY - First Floor



Sheri Winter Parker

Licensed Associate Real Estate Broker
631.848.7730
swp@corcoran.com

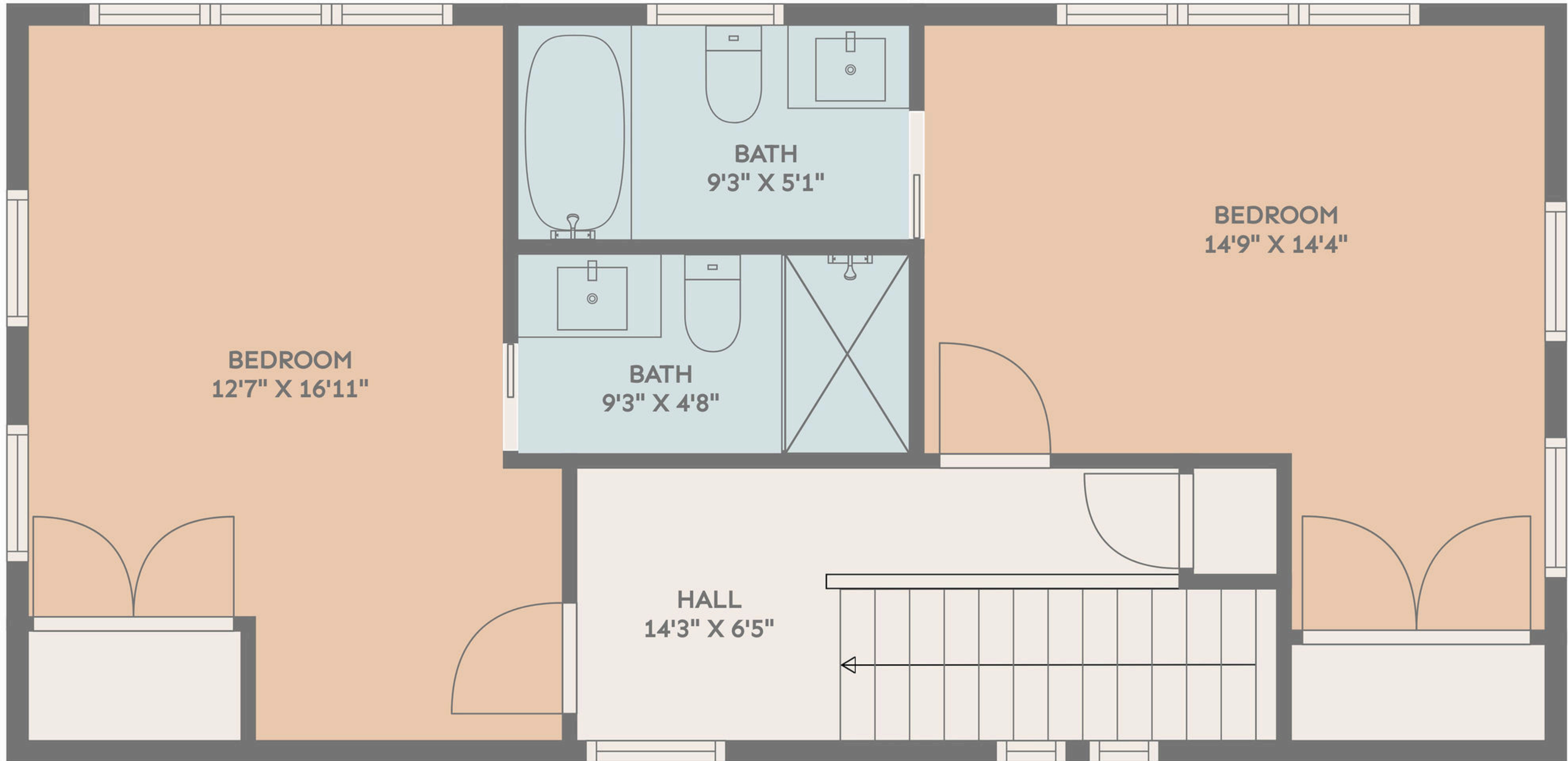
1742 sq. ft. (Total Area)

Basement: 540 sq. ft, First Floor: 592 sq. ft, Second Floor: 610 sq. ft
Excluded Areas: Electrical Room: 46 sq. ft

Calculated measurements deemed highly reliable but not guaranteed.

corcoran

216 North St, Greenport, NY - Second Floor



Sheri Winter Parker

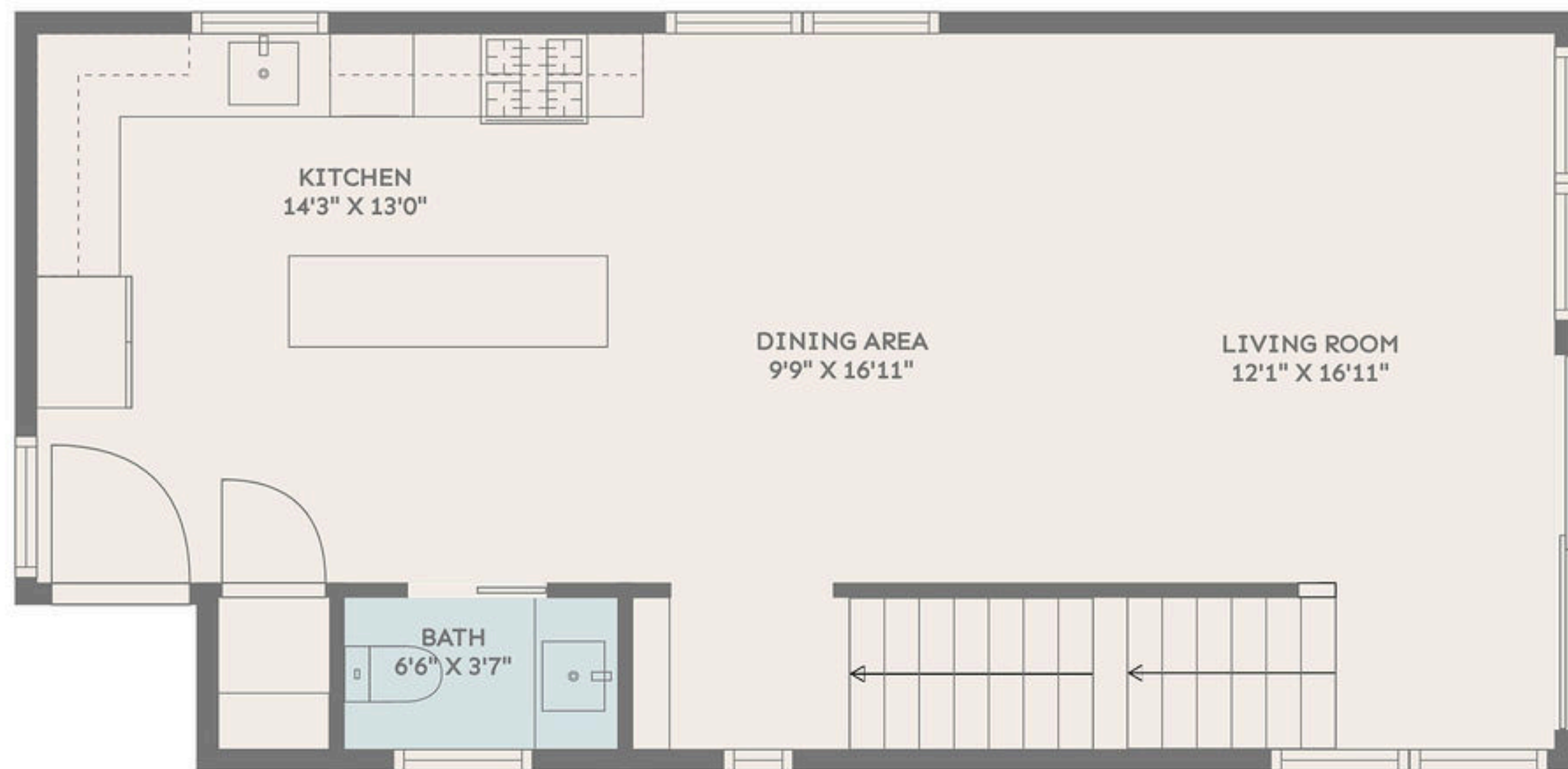
Licensed Associate Real Estate Broker
631.848.7730
swp@corcoran.com

1742 sq. ft. (Total Area)

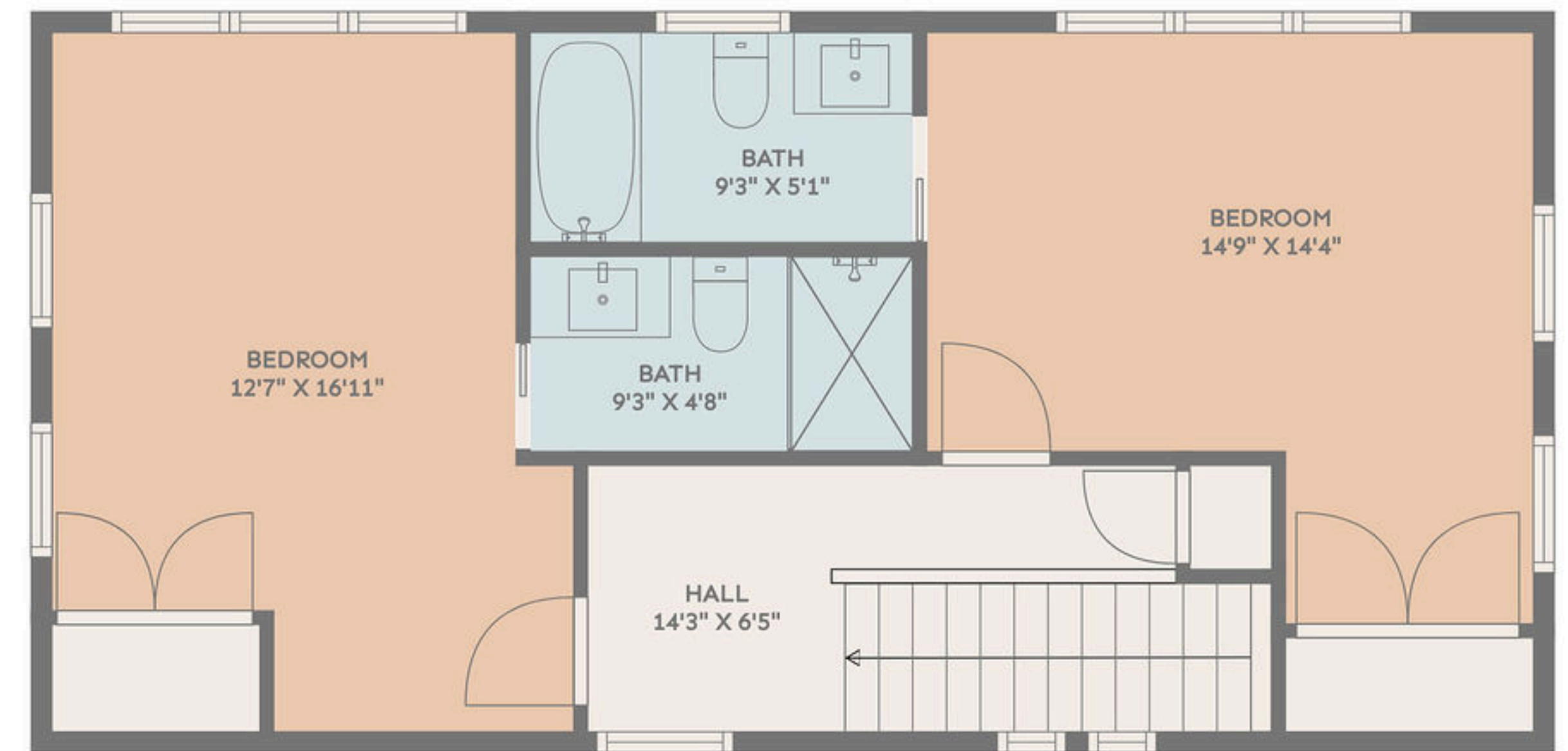
Basement: 540 sq. ft, First Floor: 592 sq. ft, Second Floor: 610 sq. ft
Excluded Areas: Electrical Room: 46 sq. ft

Calculated measurements deemed highly reliable but not guaranteed.

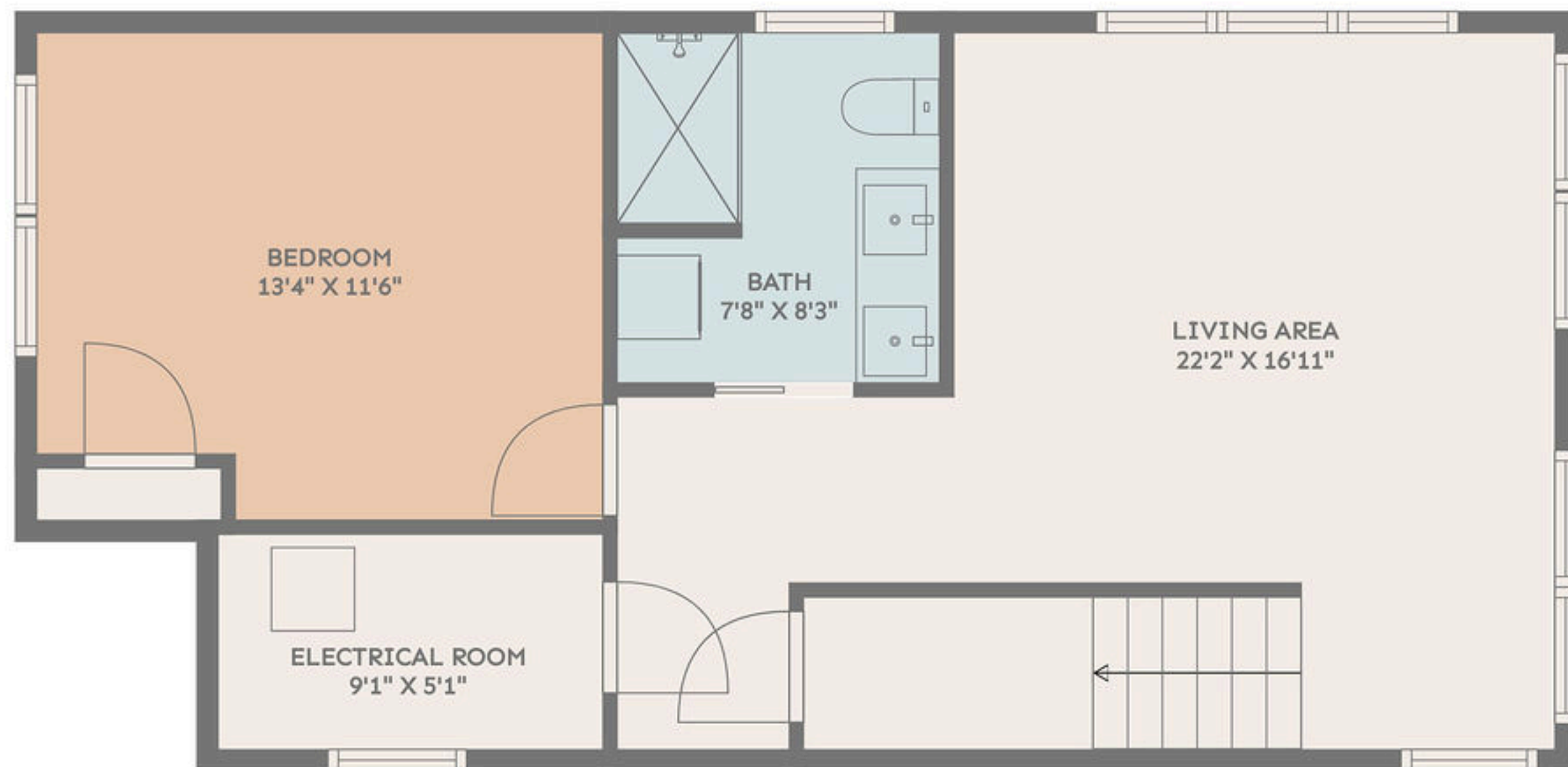
corcoran



FIRST FLOOR



SECOND FLOOR



BASEMENT

216 North St, Greenport, NY - 1742 sq. ft. (Total Area)

Basement: 540 sq. ft, First Floor: 592 sq. ft, Second Floor: 610 sq. ft

Excluded Areas: Electrical Room: 46 sq. ft

Calculated measurements deemed highly reliable but not guaranteed.

Sheri Winter Parker

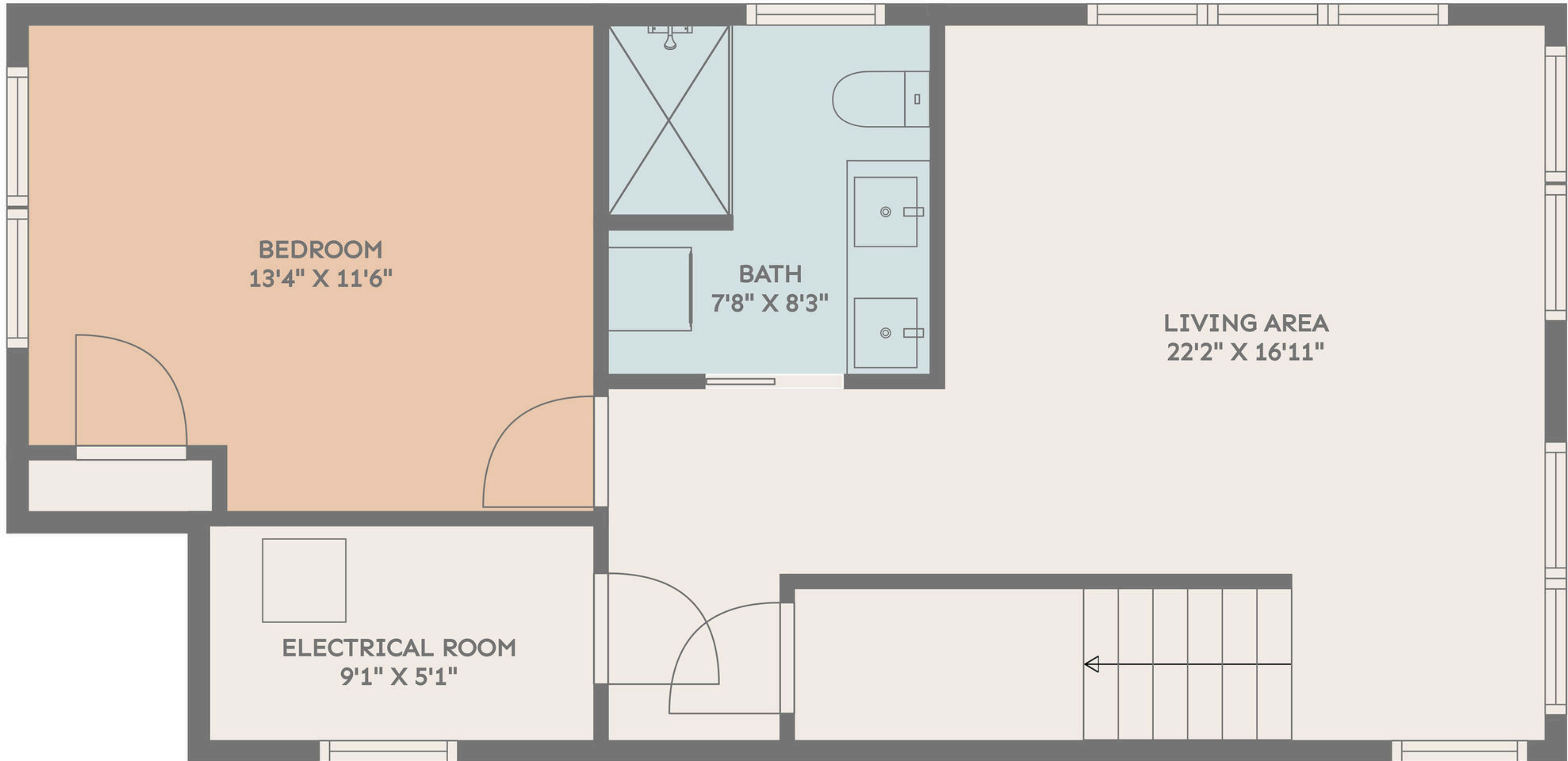
Licensed Associate Real Estate Broker

631.848.7730

swp@corcoran.com

corcoran

216 North St, Greenport, NY - Basement



Sheri Winter Parker

Licensed Associate Real Estate Broker
631.848.7730
swp@corcoran.com

1742 sq. ft. (Total Area)

Basement: 540 sq. ft, First Floor: 592 sq. ft, Second Floor: 610 sq. ft
Excluded Areas: Electrical Room: 46 sq. ft

Calculated measurements deemed highly reliable but not guaranteed.

corcoran