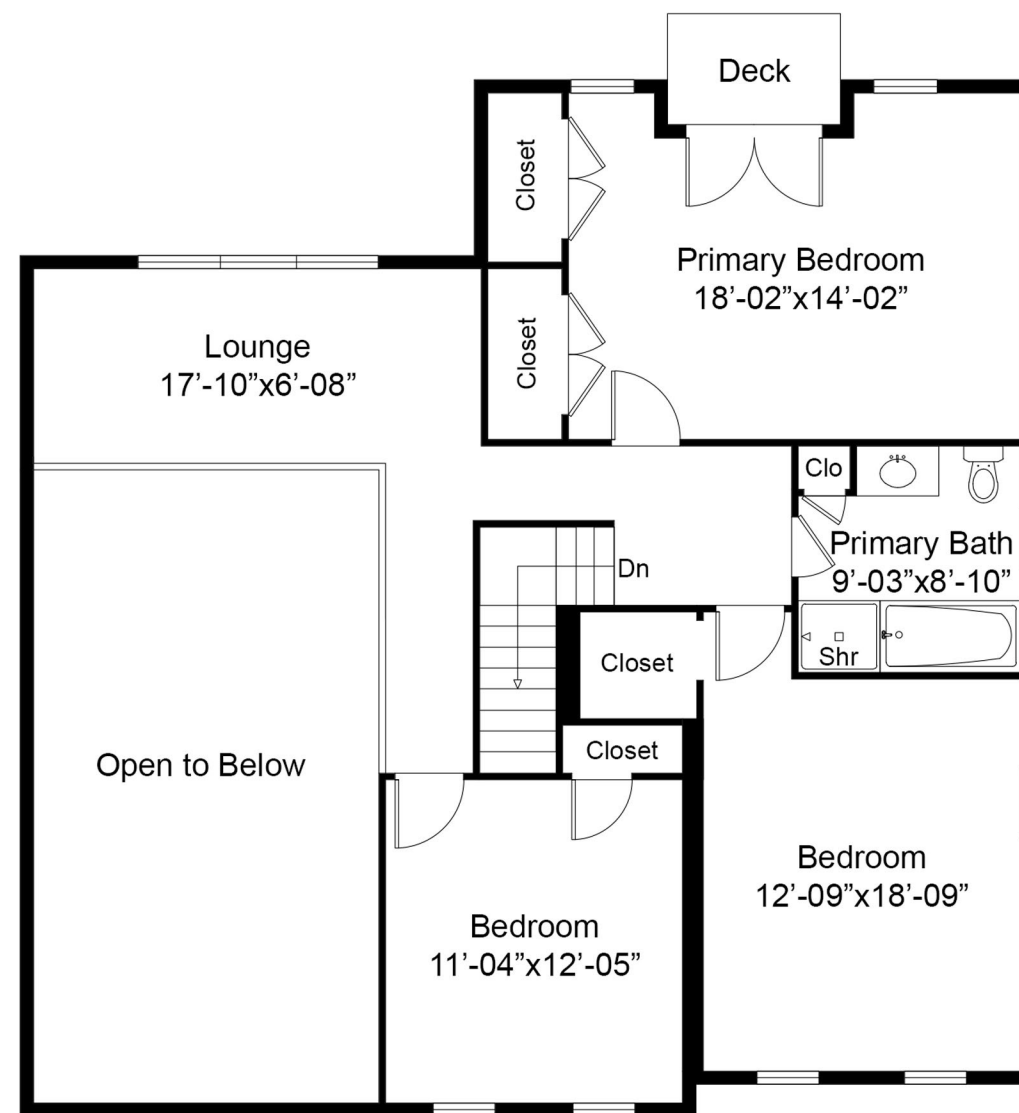


FIRST FLOOR

Floor plan, furniture, and fixture measurements and dimensions are approximate and are for illustrative purposes only.
The representative gives no guarantee, warranty or representation as to the accuracy and completeness of the floor plan.

First Floor	1,360.00 sq.ft.
Second Floor	1,046.00 sq.ft.
Lower Level	665.00 sq.ft.
Basement	592.00 sq.ft.

6 Shorewood Rd, Shelter Island, NY 11964

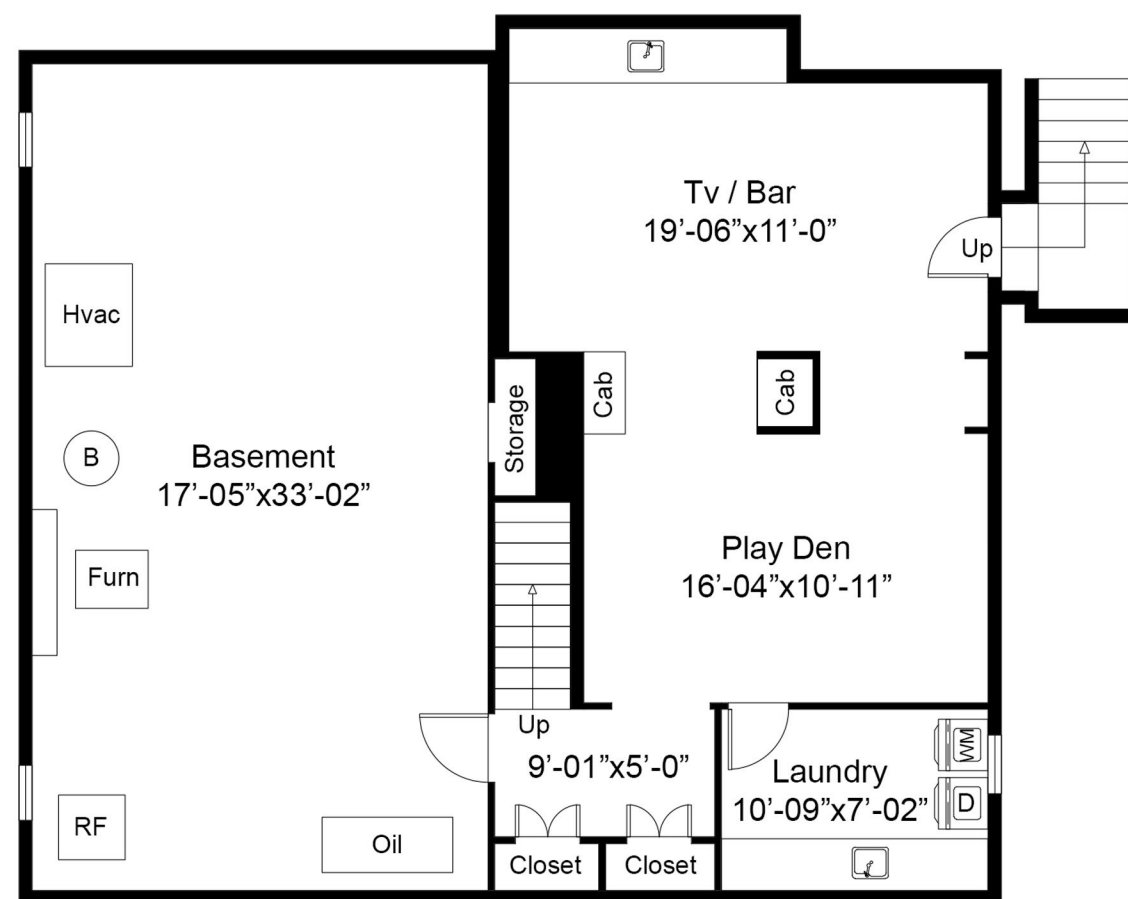


SECOND FLOOR

Floor plan, furniture, and fixture measurements and dimensions are approximate and are for illustrative purposes only.
The representative gives no guarantee, warranty or representation as to the accuracy and completeness of the floor plan.

First Floor	1,360.00 sq.ft.
Second Floor	1,046.00 sq.ft.
Lower Level	665.00 sq.ft.
Basement	592.00 sq.ft.

6 Shorewood Rd, Shelter Island, NY 11964

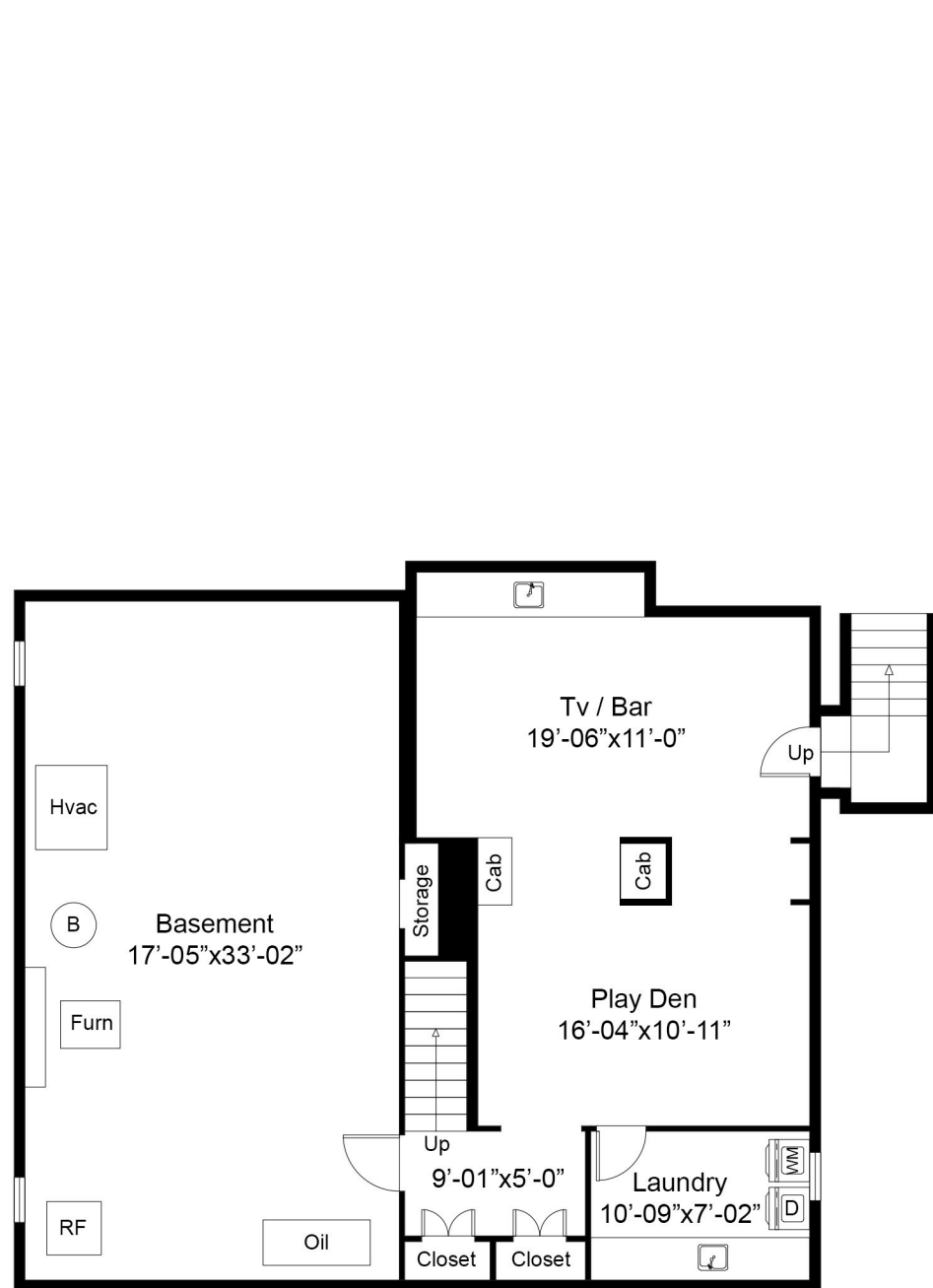


LOWER LEVEL

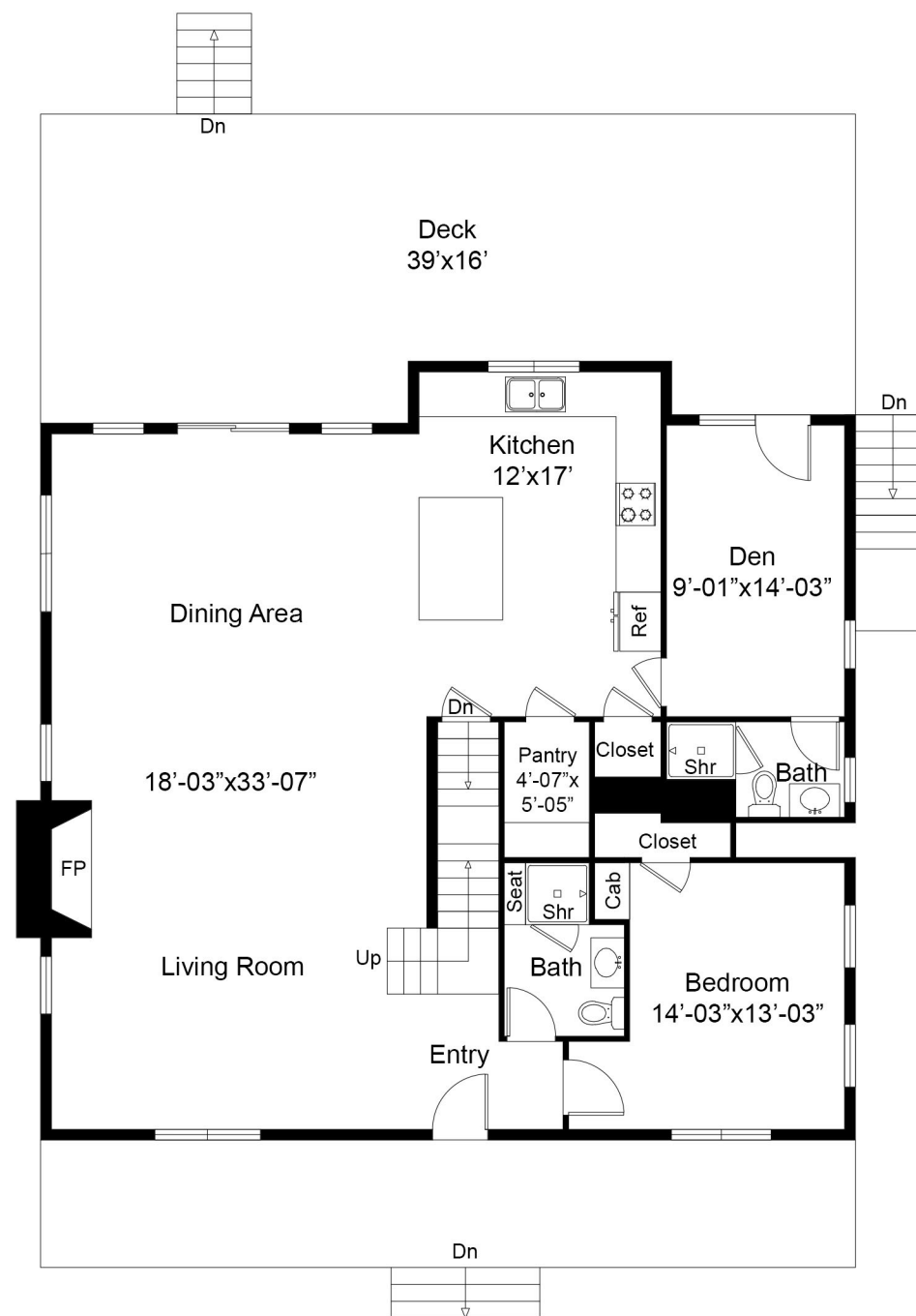
Floor plan, furniture, and fixture measurements and dimensions are approximate and are for illustrative purposes only.
The representative gives no guarantee, warranty or representation as to the accuracy and completeness of the floor plan.

First Floor	1,360.00 sq.ft.
Second Floor	1,046.00 sq.ft.
Lower Level	665.00 sq.ft.
Basement	592.00 sq.ft.

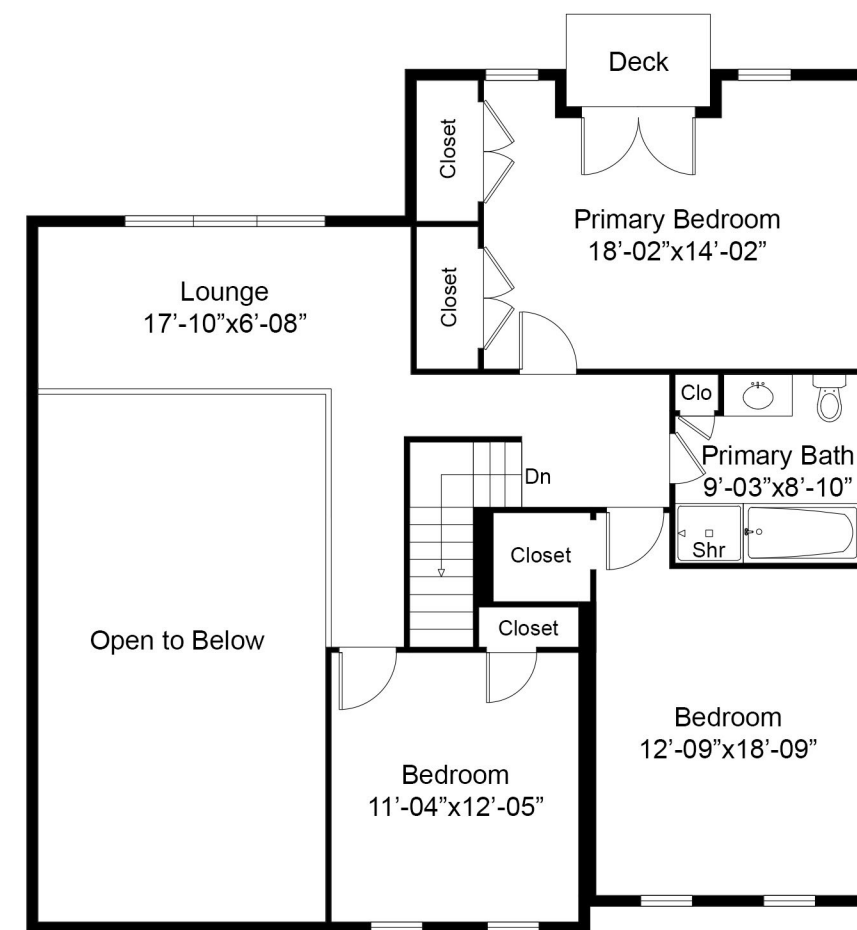
6 Shorewood Rd, Shelter Island, NY 11964



LOWER LEVEL



FIRST FLOOR



SECOND FLOOR

Floor plan, furniture, and fixture measurements and dimensions are approximate and are for illustrative purposes only.
The representative gives no guarantee, warranty or representation as to the accuracy and completeness of the floor plan.

First Floor	1,360.00 sq.ft.
Second Floor	1,046.00 sq.ft.
Lower Level	665.00 sq.ft.
Basement	592.00 sq.ft.

6 Shorewood Rd, Shelter Island, NY 11964