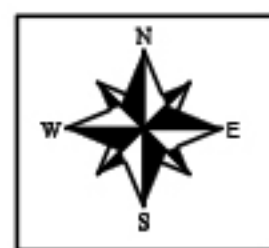


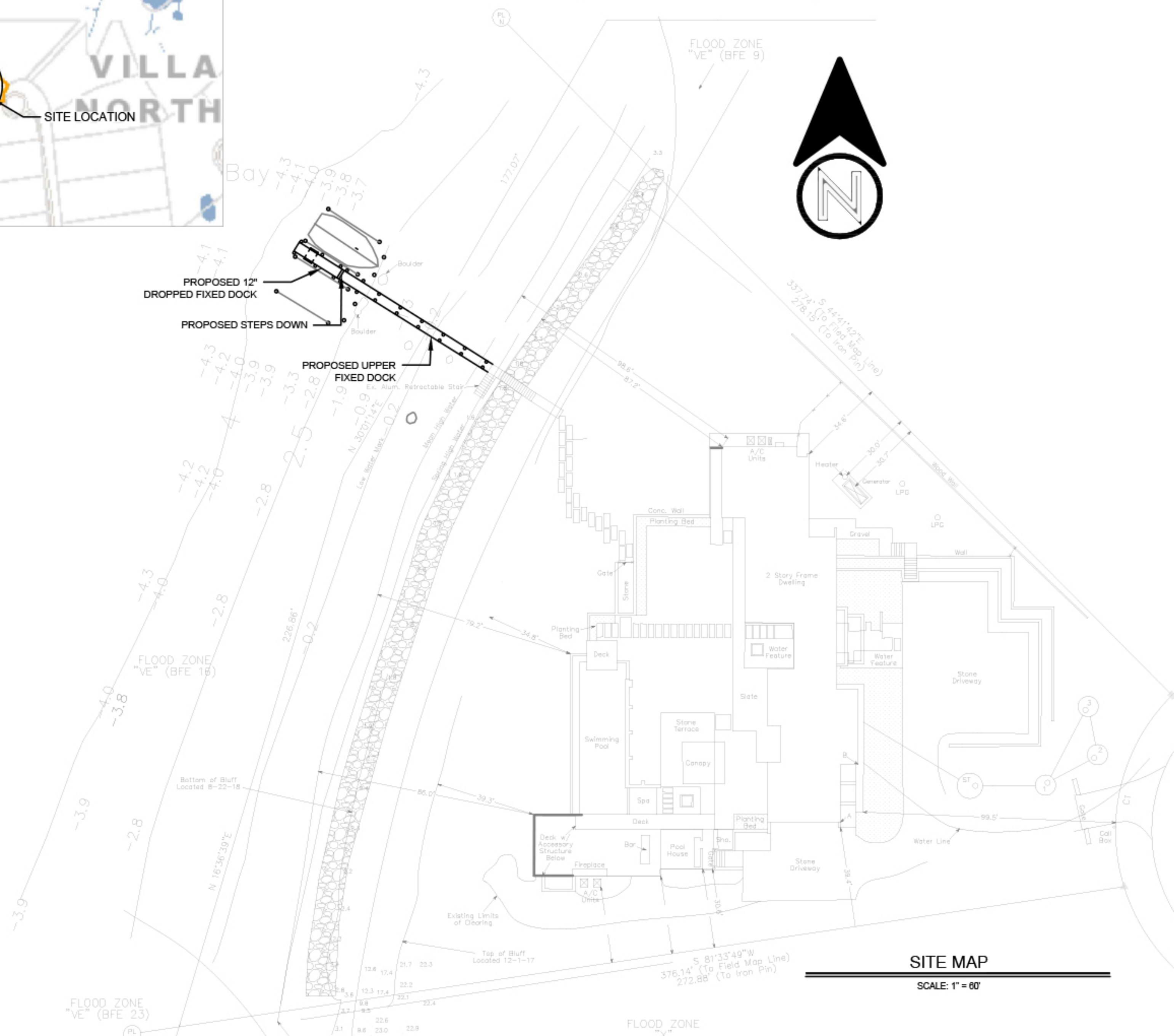
SITE LOCATION MAP



APPLICANT PROPOSES TO INSTALL A 4'X 69' ELEVATED FIXED CATWALK WITH A 4'X 20' FIXED SECTION @ 12" LOWER W/ LADDER AS NECESSARY. SUPPORTED BY 10"Ø PILINGS @ 10' ON CENTER. (12) 10"x40' TIE OFF PILINGS. AT VILLAGE OF NORTH HAVEN, SUFFOLK COUNTY, NEW YORK.

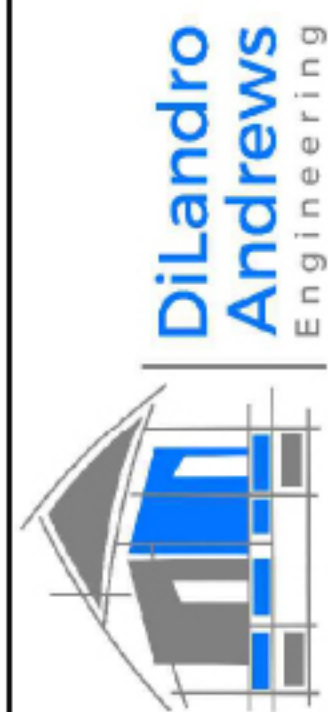
DRAWING INDEX

C-000	COVER SHEET
C-001	DOCK PLAN
C-002	DOCK DETAILS
C-003	BEACH CROSS SECTION



SITE MAP

SCALE: 1" = 60'



4 ON THE BLUFF
NORTH HAVEN, NY 11963

08/01/2022

BY: STB

COVER SHEET

DWG No:
C-000
SHEET No:
1/4

TOP OF DECKING IS TO BE THRU FLOW
OR COMPARABLE OPEN GRATE DECKING
ALLOWING 60% OR MORE OPEN SPACE



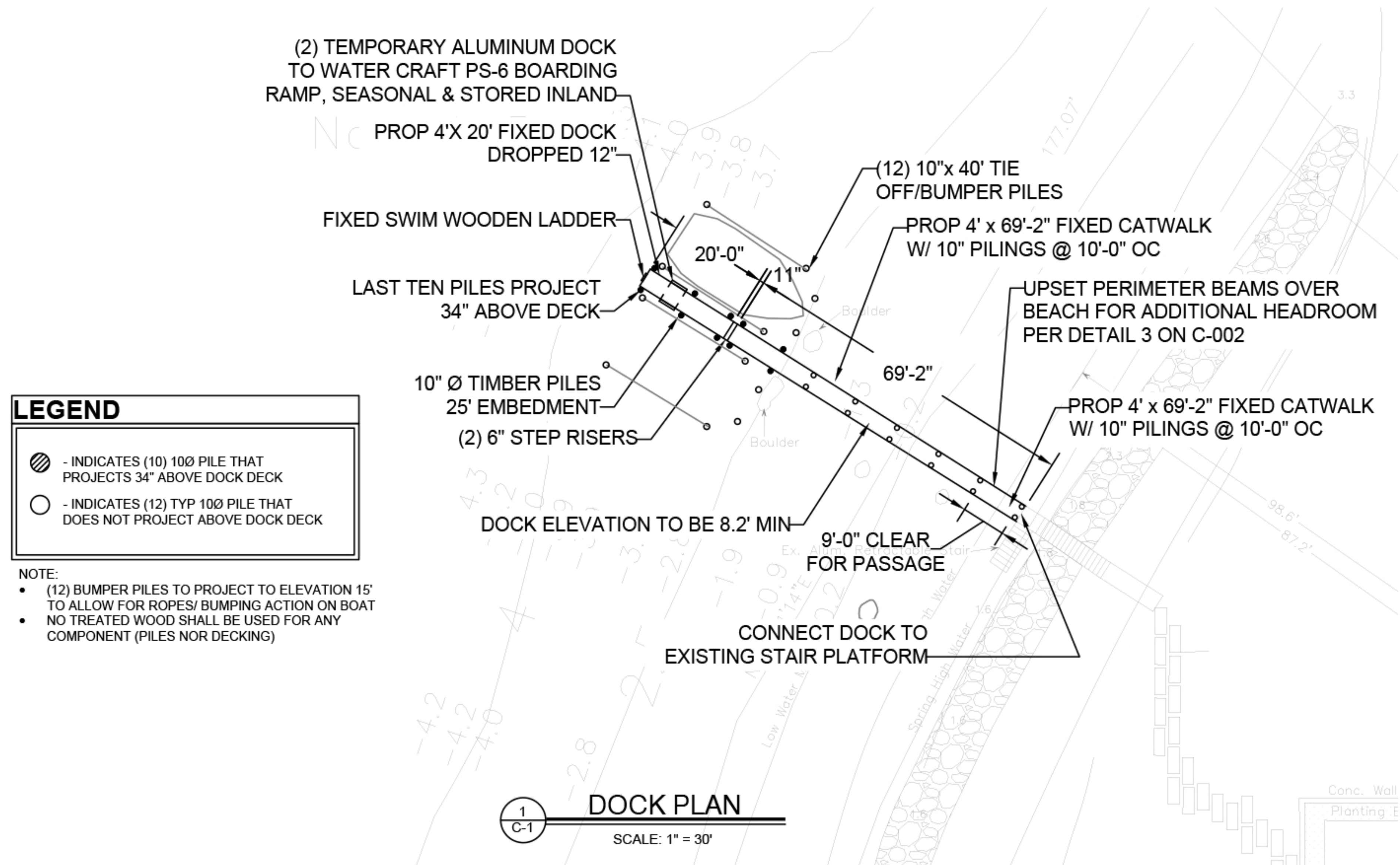
4 ON THE BLUFF
NORTH HAVEN, NY 11963

08/01/2022

BY: STB

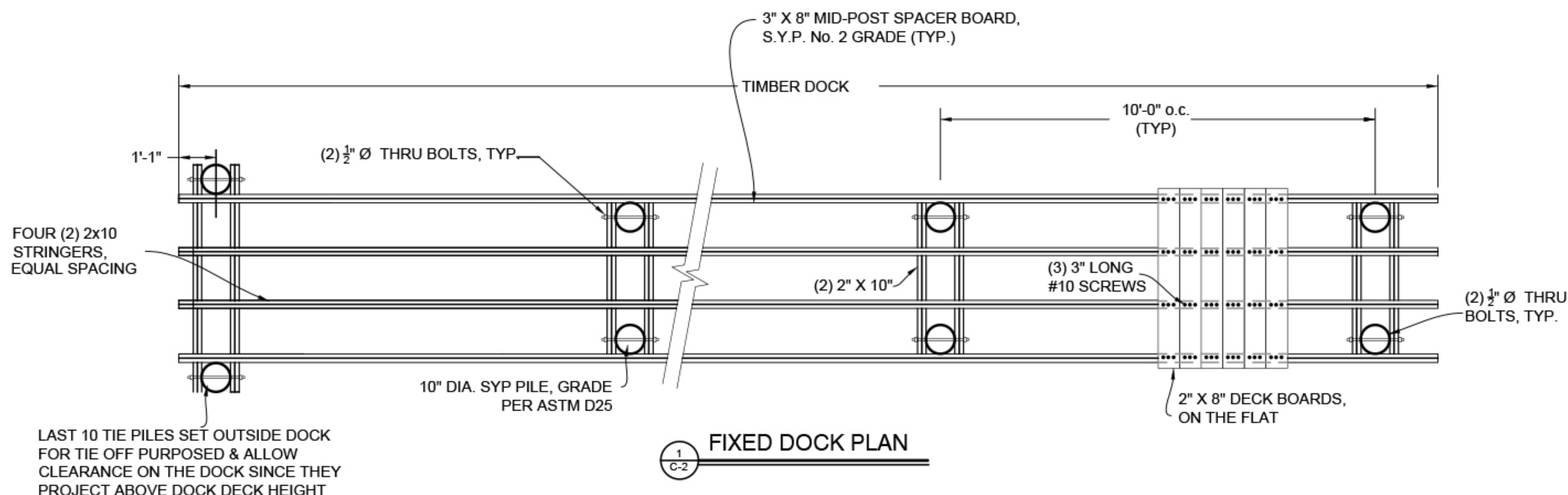
DOCK PLAN

DWG No:
C-001
SHEET No:
2/4

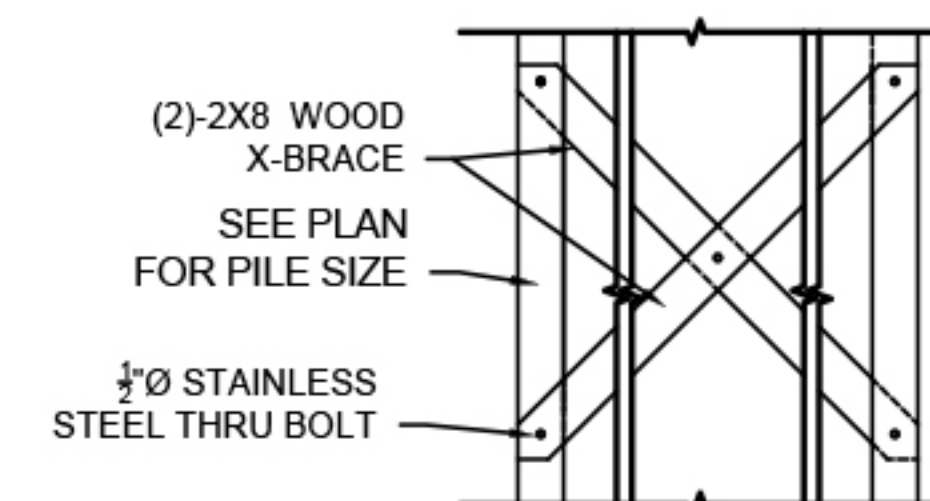
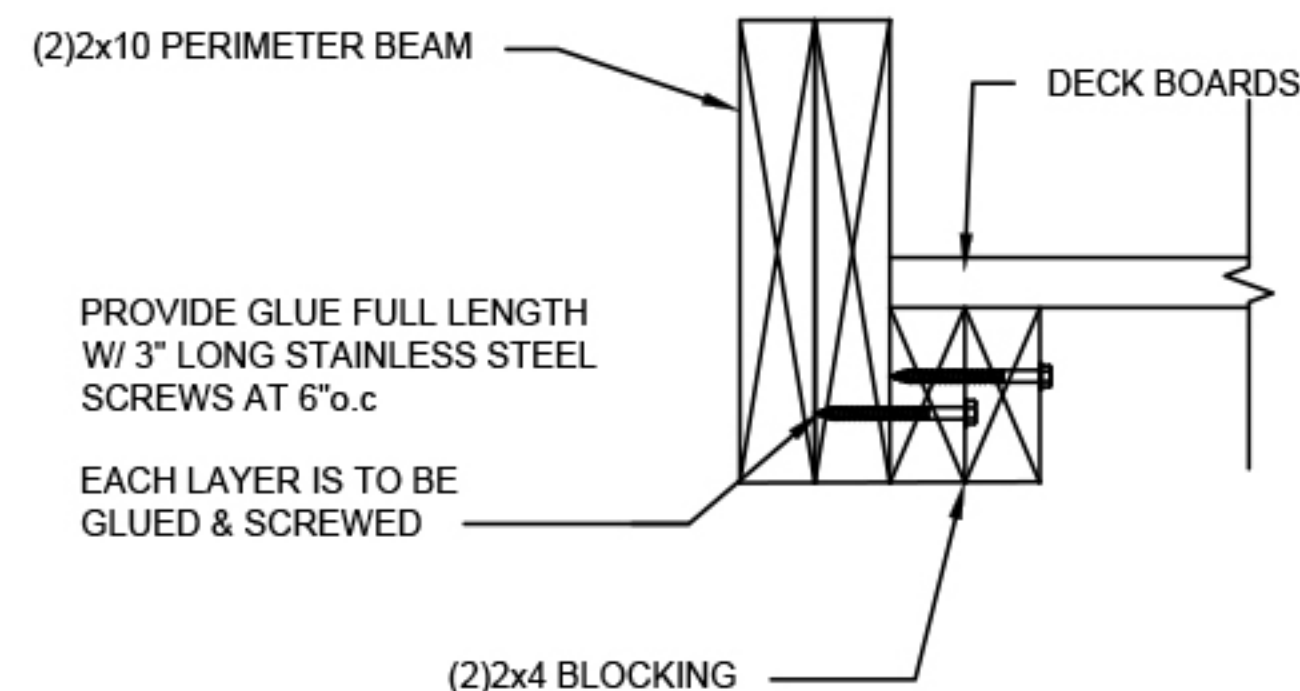
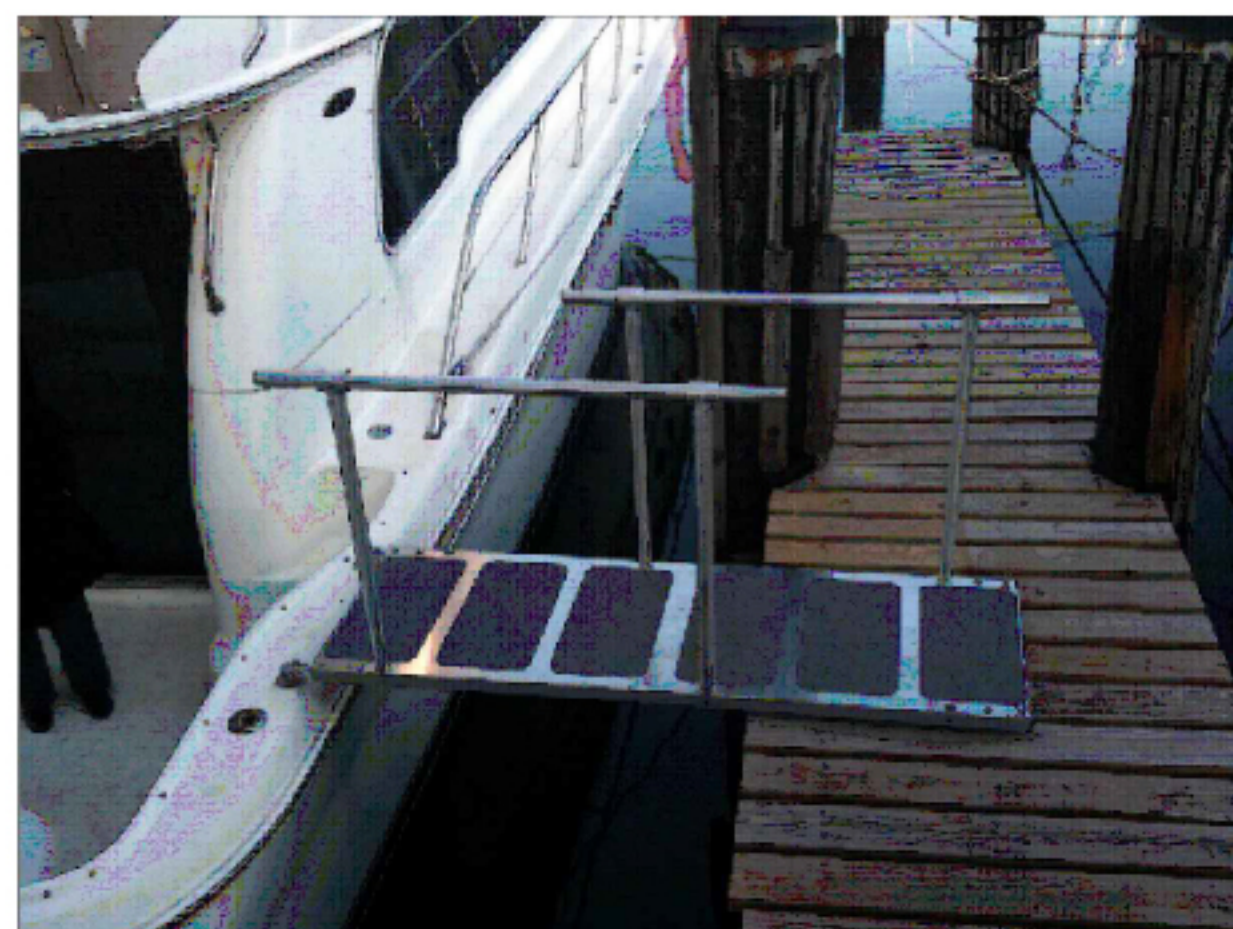


APPLICANT PROPOSES TO INSTALL A 4'X 69' ELEVATED FIXED CATWALK WITH A 4'X 20' FIXED SECTION @ 12" LOWER W/ LADDER AS NECESSARY. SUPPORTED BY 10"Ø PILINGS @ 10' ON CENTER. (12) 10"x40' TIE OFF PILINGS. AT VILLAGE OF NORTH HAVEN, SUFFOLK COUNTY, NEW YORK.

TOP OF DECKING IS TO BE THRU FLOW OR COMPARABLE OPEN GRATE DECKING ALLOWING 60% OR MORE OPEN SPACE



PROVIDE GLUE FULL LENGTH AND WITH #10 SCREWS 3" LONG AT 6" O.C STAGGERED



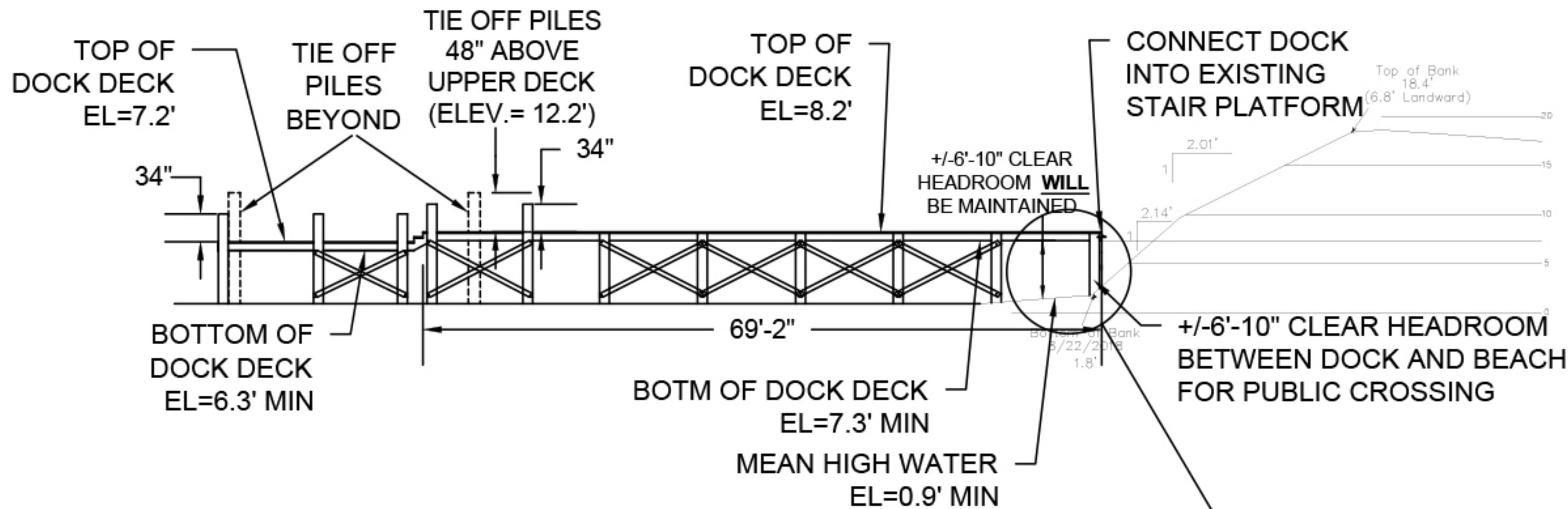
NOTE:
CROSS BRACES ONLY TO BE USED SEAWARD OF LW MARK (ABOUT 25' FROM EXISTING STAIRS)

PS-6 BOARDING RAMP, SEASONAL

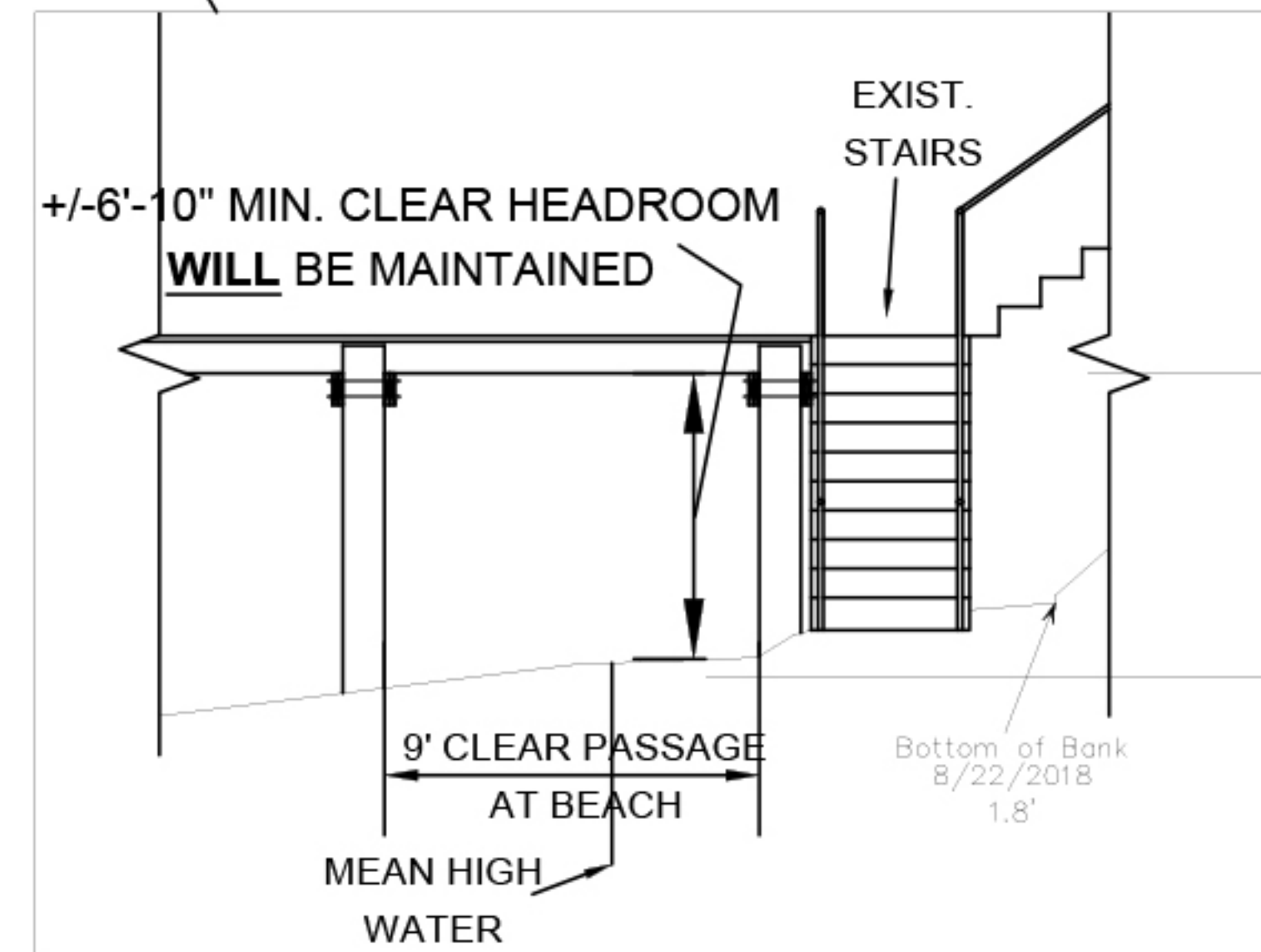
NOTE:
TYPICAL WET STEPS, EXACT MODEL TO BE COMPARABLE, DESIGNED BY OTHERS

APPLICANT PROPOSES TO INSTALL A 4'X 69' ELEVATED FIXED CATWALK WITH A 4'X 20' FIXED SECTION @ 12" LOWER W/ LADDER AS NECESSARY. SUPPORTED BY 10"Ø PILINGS @ 10' ON CENTER. (12) 10"x40' TIE OFF PILINGS. AT VILLAGE OF NORTH HAVEN, SUFFOLK COUNTY, NEW YORK.

TOP OF DECKING IS TO BE THRU FLOW OR COMPARABLE OPEN GRATE DECKING ALLOWING 60% OR MORE OPEN SPACE



1 BEACH CROSS SECTION
C-3
SCALE: 1" = 20'



2 LARGER SCALE SECTION
C-3
SCALE: 1/8" = 1'-0"