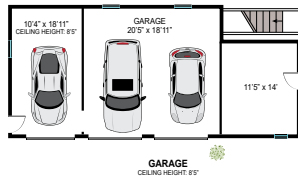
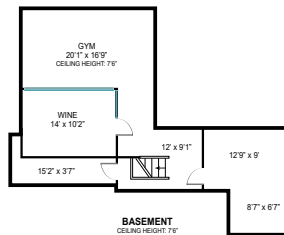


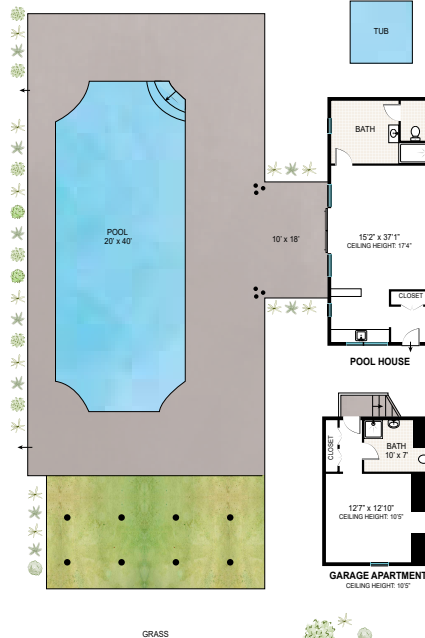
FIRST FLOOR



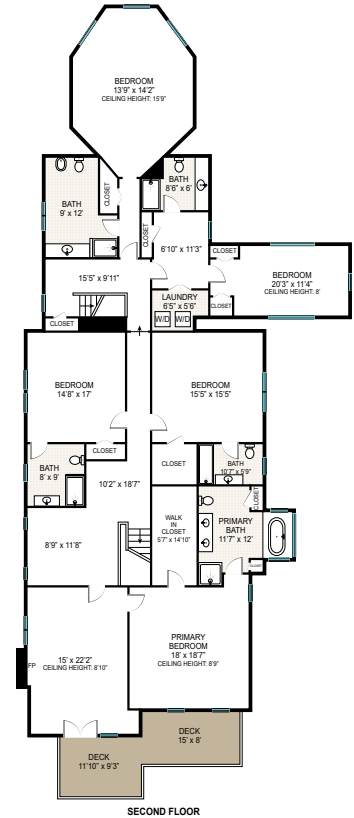
GARAGE
CEILING HEIGHT: 8'5"



BASEMENT
CEILING HEIGHT: 7'6"



GARAGE APARTMENT
CEILING HEIGHT: 10'5"



SECOND FLOOR

FIRST FLOOR INT: 3577 ft²
 FIRST FLOOR OUT: 3106 ft²
 SECOND FLOOR INT: 2929 ft²
 SECOND FLOOR OUT: 207 ft²
 GARAGE: 707 ft²
 BASEMENT: 766 ft²

APT: 238 ft²
 POOL: 800 ft²
 POOL HOUSE: 564 ft²
 TOTAL INT: 8781 ft²
 TOTAL OUT: 41113 ft²
 TOTAL: 12894 ft²

Scale in feet. Indicative only. Dimensions are approximate. All information contained herein is gathered from sources we believe to be reliable. However, we cannot guarantee its accuracy and interested persons should rely on their own enquiries.

430 Halsey Neck Lane, Southampton

corcoran