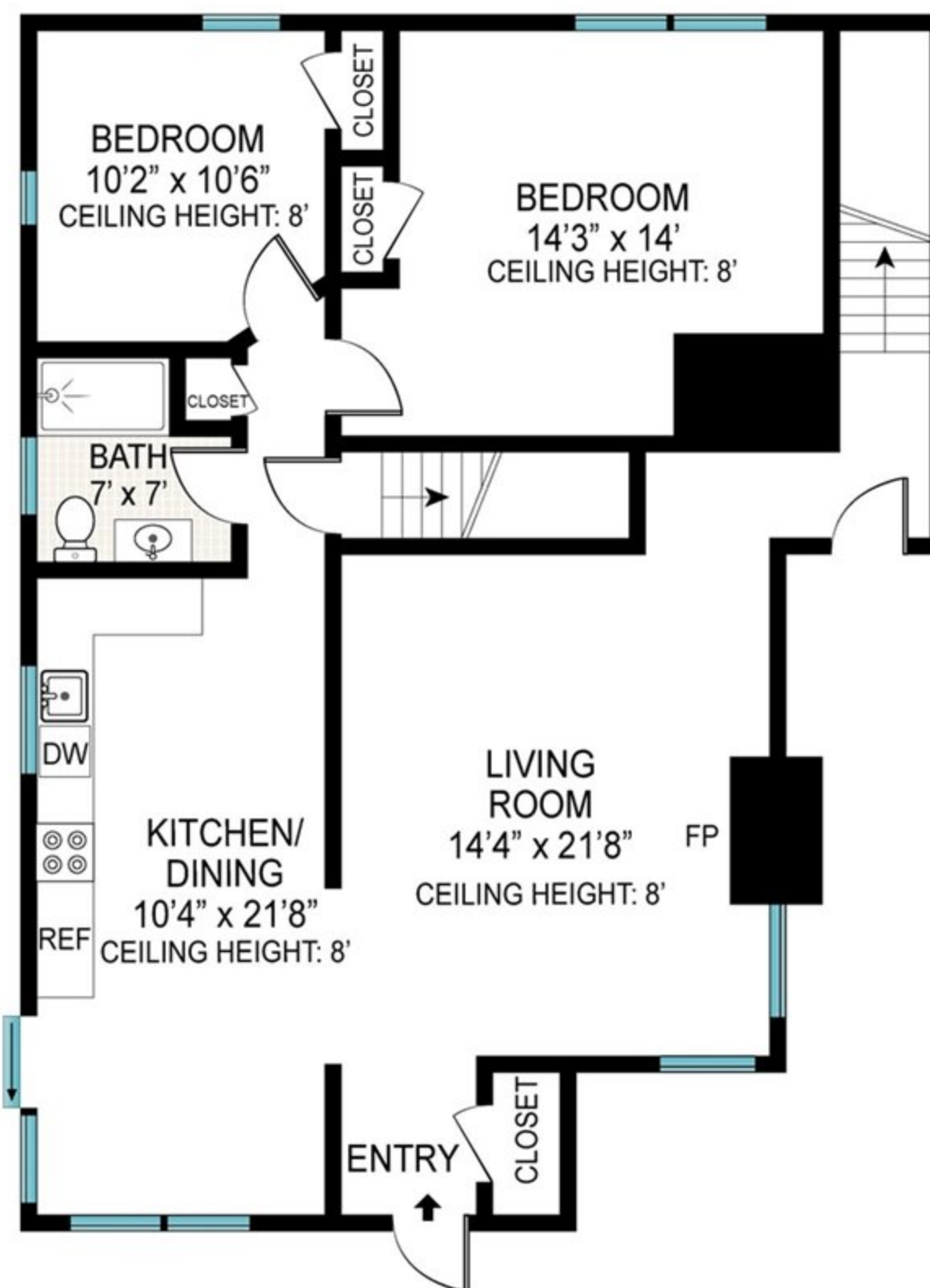
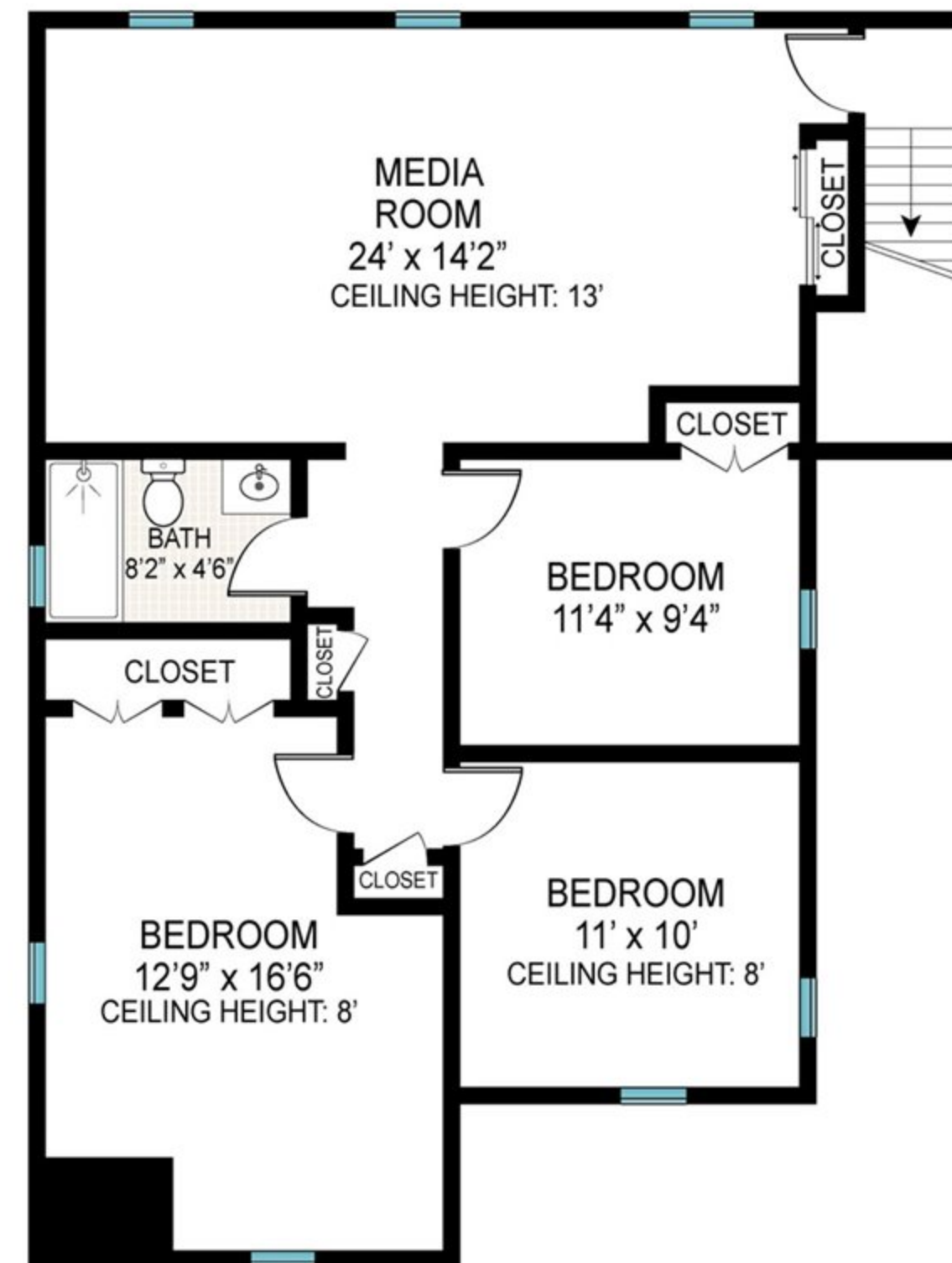


BASEMENT
CEILING HEIGHT: 6'6"



FIRST FLOOR



SECOND FLOOR

FIRST FLOOR INT: 900 ft²
 SECOND FLOOR INT: 900 ft²
 BASEMENT: 800 ft²
 TOTAL INT: 2600 ft²
 TOTAL: 2600 ft²

Scale in feet. Indicative only. Dimensions are approximate. All information contained herein is gathered from sources we believe to be reliable. However, we cannot guarantee its accuracy and interested persons should rely on their own enquiries.

104 Lockwood Avenue, Farmingdale