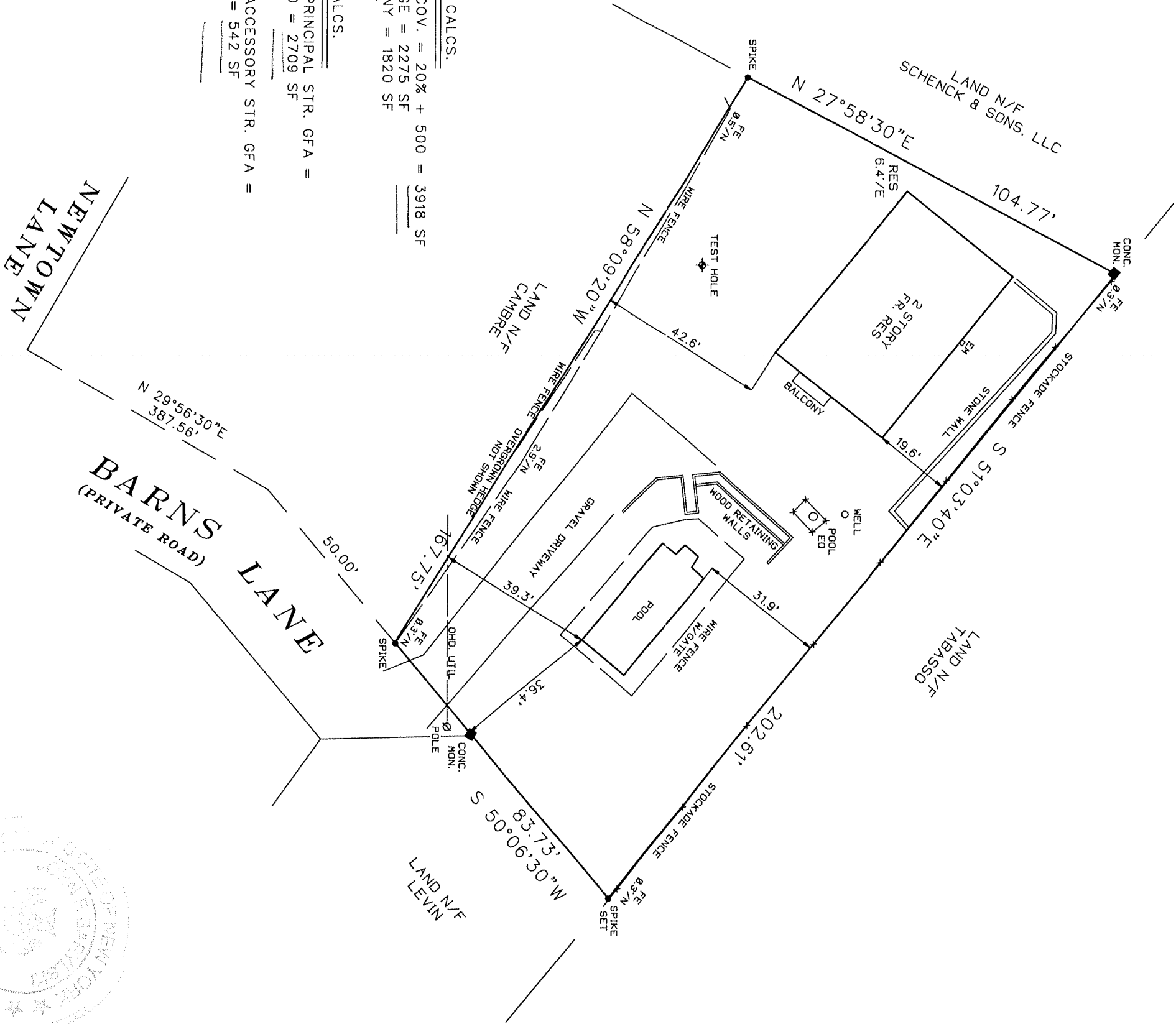


SURVEYED FOR: JOSEPH LAMBIASE
PROPERTY LOCATED AT THE INC VILLAGE OF EAST HAMPTON
TOWN OF EAST HAMPTON
SUFFOLK COUNTY, NEW YORK
S.C.T.M. # 301-004-02-13.2
AREA = 17,089 SF = 0.392 AC
SCALE: 1"=30'

NOTE: THE EXISTENCE OF RIGHT OF WAYS,
WETLANDS AND/OR EASEMENTS OF RECORD
IF ANY, NOT SHOWN ARE NOT GUARANTEED.



LOT COVERAGE CALCS.

MAX ALLOWED COV. = 20% + 500 = 3918 SF
EXIST. COVERAGE = 2275 SF
RES W/ BALCONY = 1820 SF
POOL = 455 SF

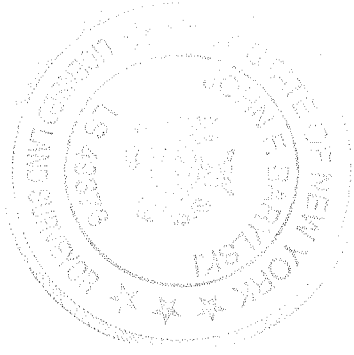
FLOOR AREA CALCS.

MAX ALLOWED PRINCIPAL STR. GFA =
= 10% + 1000 = 2709 SF
MAX ALLOWED ACCESSORY STR. GFA =
= 2% + 200 = 542 SF

TEST HOLE DATA

(NOT TO SCALE)
BY: SHAWN M. BARON, M.S.
MAY 21, 2014
GRADE EL. = 26

1.3'	MIXED SILTY SAND (SM)
3.8'	SILT LOAM (SM)
11.9'	COARSE SAND W/ GRAVEL (SP)
	NO WATER ENCOUNTERED



SURVEYED BY:
BARYLSKI LAND SURVEYING
2320 MAIN ST. P.O. BOX 1302
NEWMAN VILLAGE CONDO.
BRIDGEHAMPTON, NEW YORK
(631-537-7944)
APRIL 23, 2014