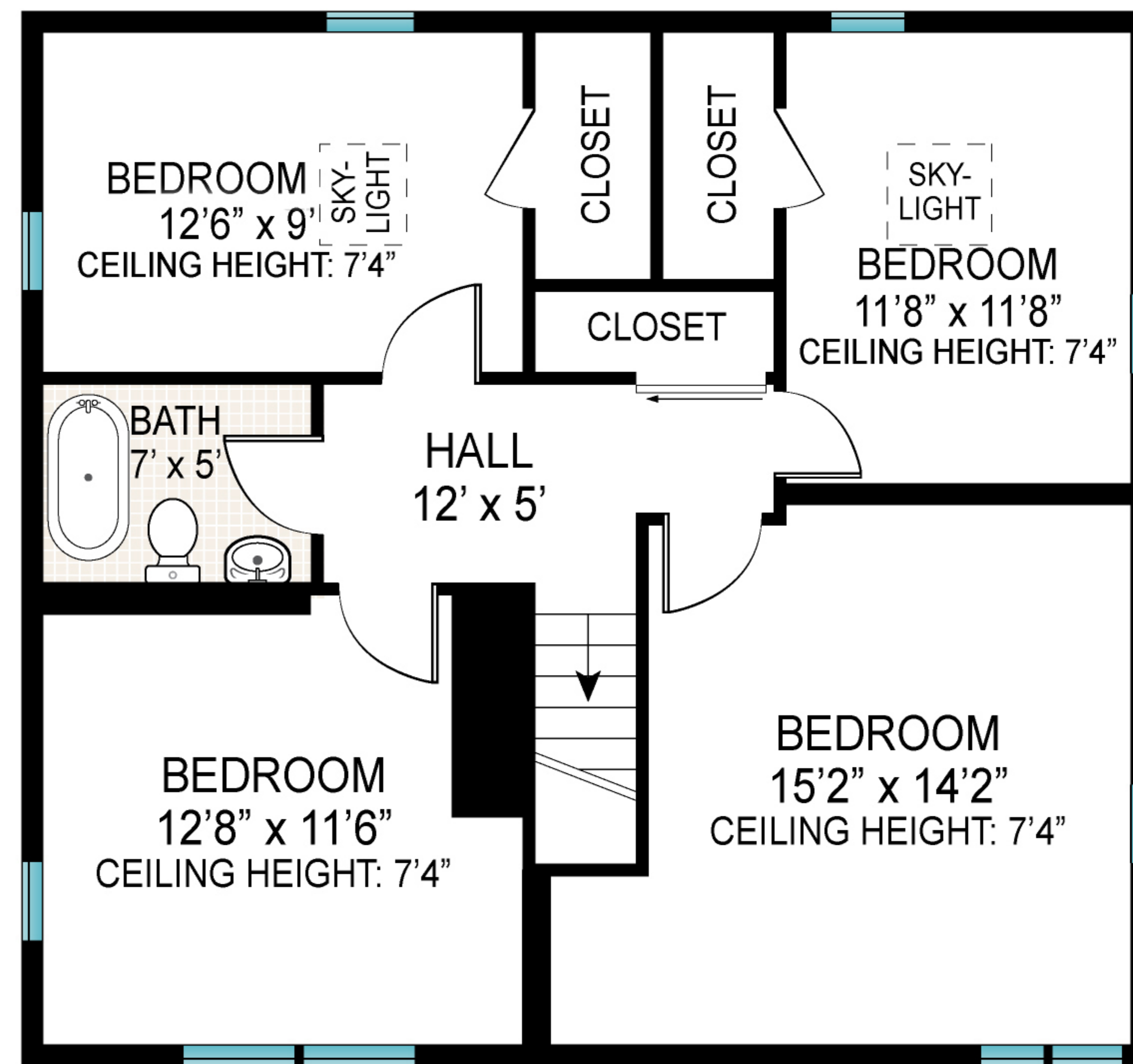
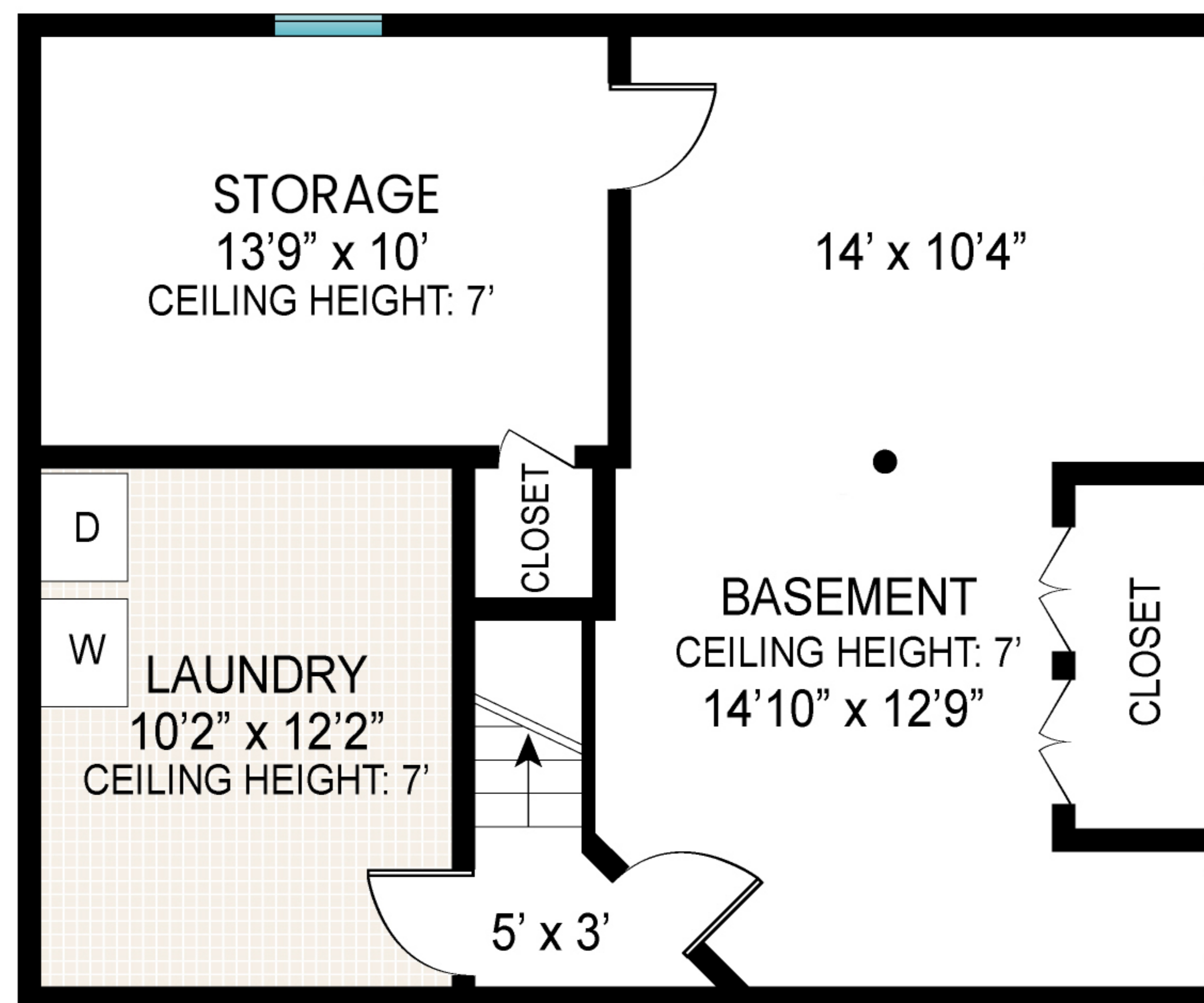


FIRST FLOOR



SECOND FLOOR



BASEMENT
CEILING HEIGHT: 7'

FIRST FLOOR INT: 800 ft²
 SECOND FLOOR INT: 790 ft²
 BASEMENT: 700 ft²
 TOTAL INT: 2290 ft²
 TOTAL: 2290 ft²

Scale in feet. Indicative only. Dimensions are approximate. All information contained herein is gathered from sources we believe to be reliable. However, we cannot guarantee its accuracy and interested persons should rely on their own enquiries.