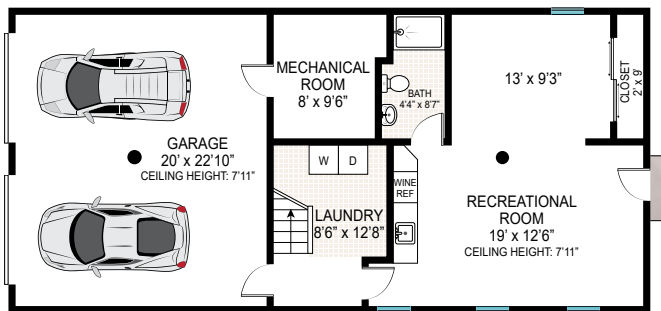
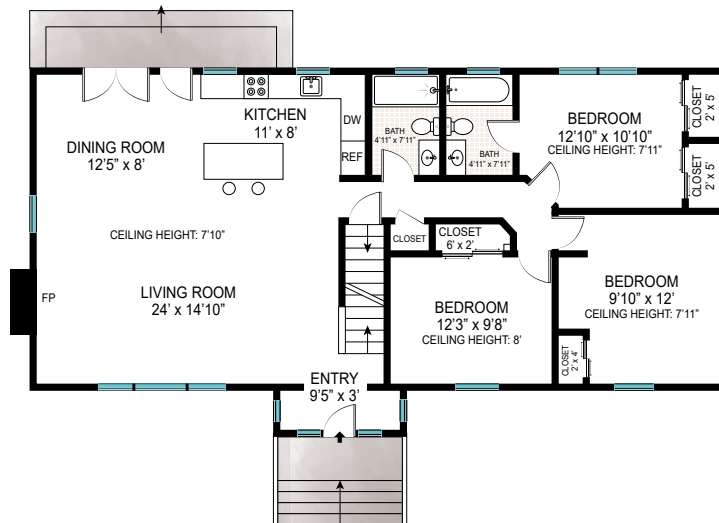


SECOND FLOOR
CEILING HEIGHT: 8'



BASEMENT
CEILING HEIGHT: 7'11"



FIRST FLOOR
CEILING HEIGHT: 7'11"

FIRST FLOOR INT: 1200 ft²
SECOND FLOOR INT: 1200 ft²
BASEMENT: 760 ft²
GARAGE: 440 ft²
TOTAL INT: 3600 ft²



Scale in feet. Indicative only. Dimensions are approximate. All information contained herein is gathered from sources we believe to be reliable. However, we cannot guarantee its accuracy and interested persons should rely on their own enquiries.