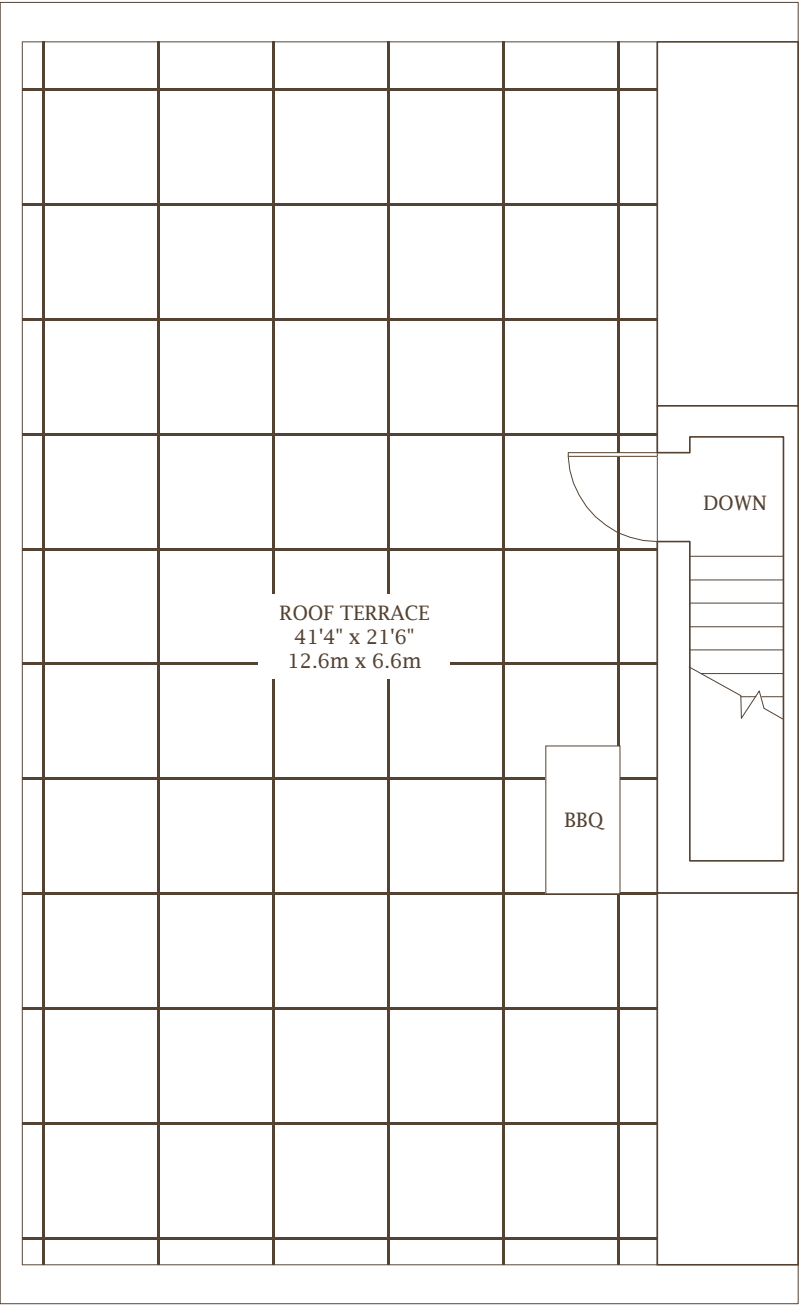
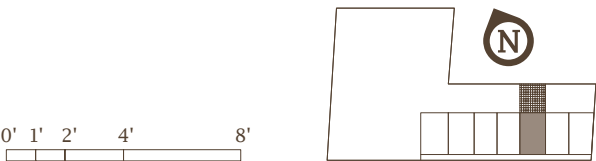


62 Bethune Street Roof Terrace

4,865 Sq Ft—452 Sq M
753 Sq Ft—70 Sq M Garden
889 Sq Ft—83 Sq M Roof Terrace
7 Bedrooms—6 Full Baths
Powder Room—Private Elevator

Roof Terrace



62 Bethune Street 3rd Floor

4,865 Sq Ft—452 Sq M

753 Sq Ft—70 Sq M Garden

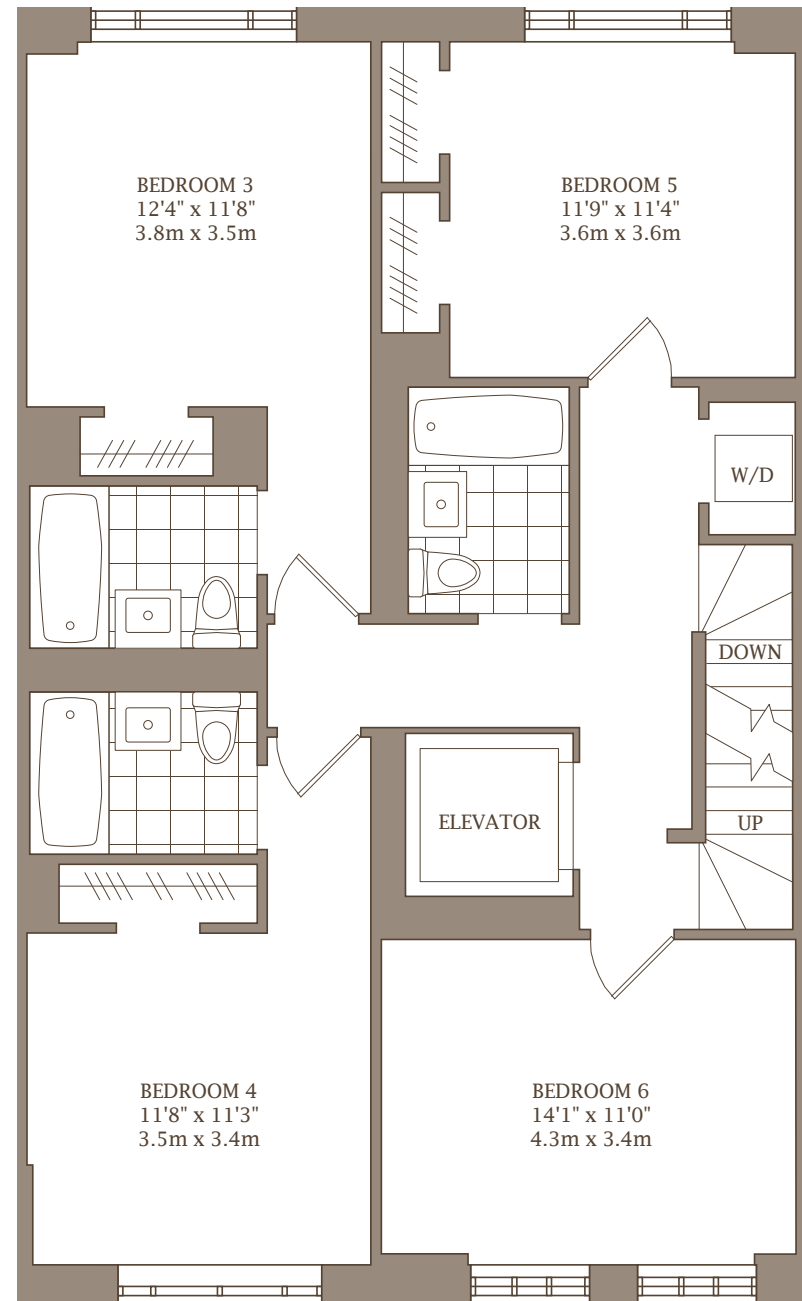
889 Sq Ft—83 Sq M Roof Terrace

7 Bedrooms—6 Full Baths

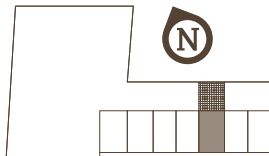
Powder Room—Private Elevator

3rd Floor

- 3rd Bedroom with en suite bath
- 4th Bedroom with en suite bath
- Washer/Dryer
- Elevator



0' 1' 2' 4' 8'



62 Bethune Street 2nd Floor

4,865 Sq Ft—452 Sq M

753 Sq Ft—70 Sq M Garden

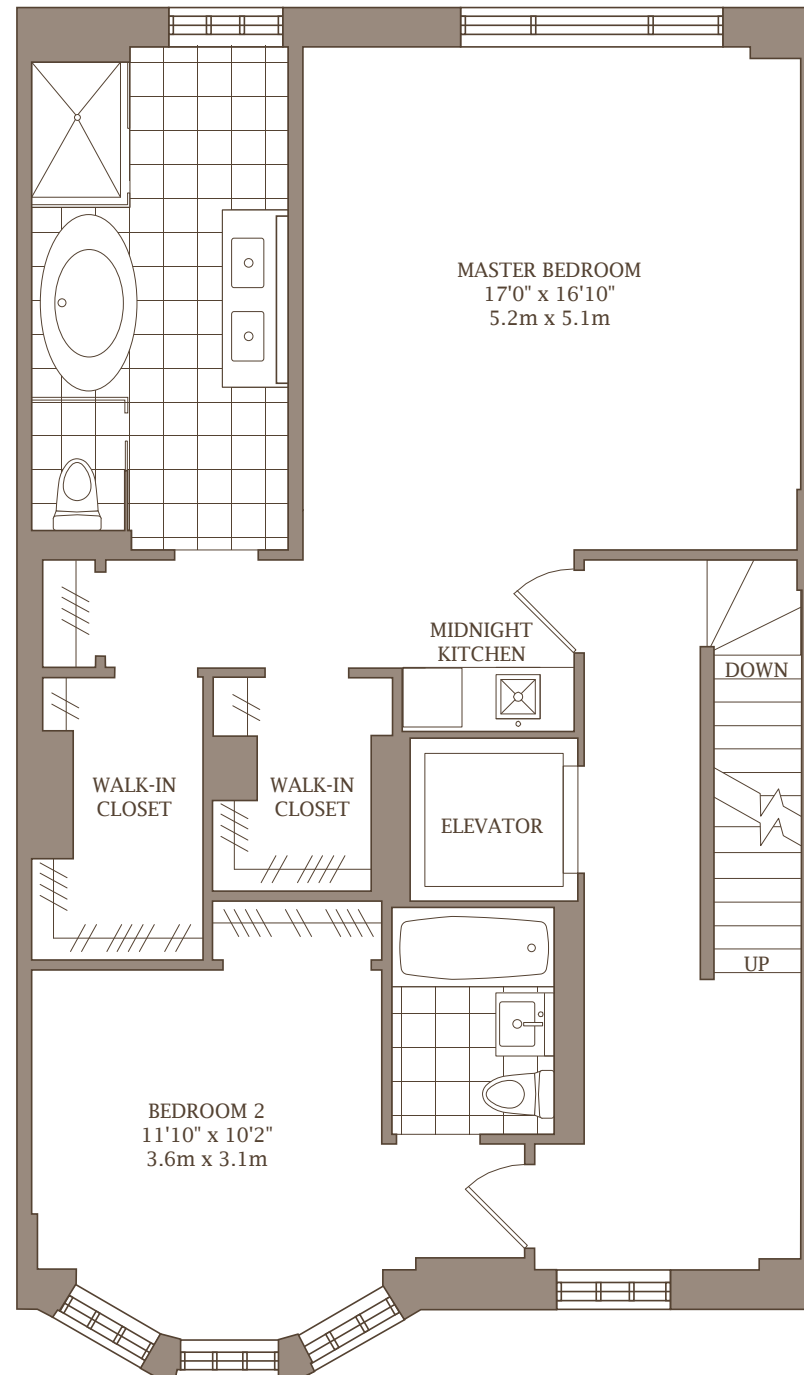
889 Sq Ft—83 Sq M Roof Terrace

7 Bedrooms—6 Full Baths

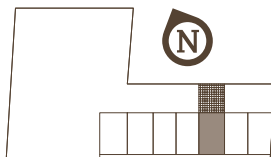
Powder Room—Private Elevator

2nd Floor

- Master Bedroom Suite with midnight kitchen, two walk-in closets, windowed oversized freestanding bath, separate stall shower, double vanities and private water closet
- 2nd Bedroom with en suite bath
- Elevator



0' 1' 2' 4' 8'

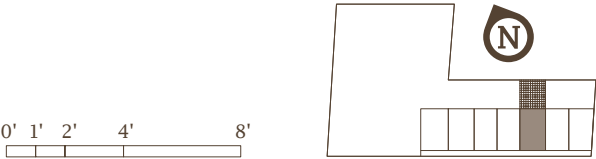
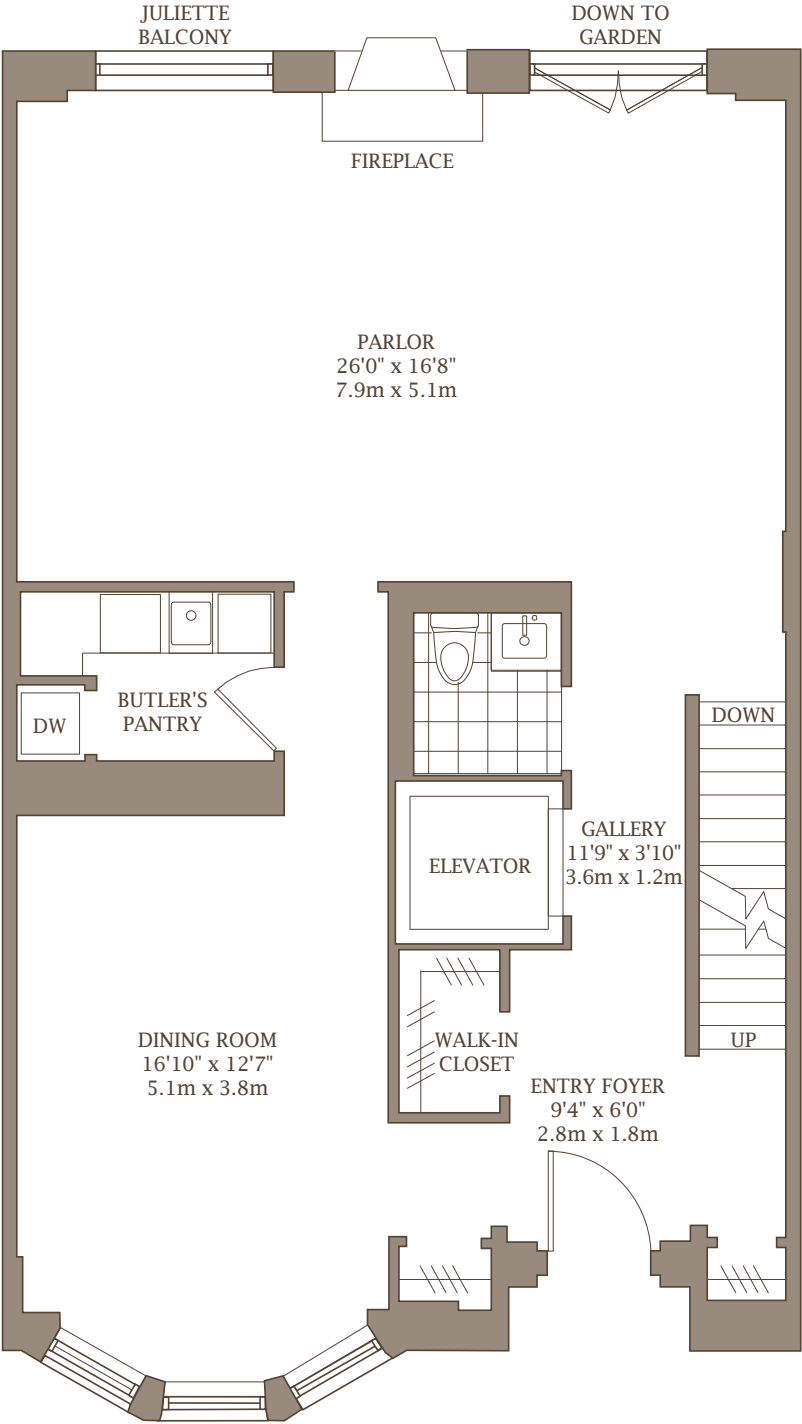


62 Bethune Street Parlor Floor

4,865 Sq Ft—452 Sq M
753 Sq Ft—70 Sq M Garden
889 Sq Ft—83 Sq M Roof Terrace
7 Bedrooms—6 Full Baths
Powder Room—Private Elevator

Parlor Floor

- Entry Foyer
- Gallery
- Parlor with Fireplace, Juliette Balcony and stairway to Garden
- Formal Dining Room with Bay Windows and Butler's Pantry
- Walk-in Entry Closet
- Elevator



62 Bethune Street Garden Floor

4,865 Sq Ft—452 Sq M

753 Sq Ft—70 Sq M Garden

889 Sq Ft—83 Sq M Roof Terrace

7 Bedrooms—6 Full Baths

Powder Room—Private Elevator

Garden Floor

- Entry Foyer
- Gallery
- Great Room with Fireplace and Garden
- Home Office/Staff Quarters with Bay Windows
- Open Kitchen
- Utility Room with side by side Washer/Dryer and Sink
- Elevator

