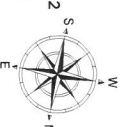


FIRST FLOOR

Scale in feet. Indicative only. Dimensions are approximate. All information contained herein is gathered from sources we believe to be reliable. However, we cannot guarantee its accuracy and interested persons should rely on their own enquiries.

11 Rogers Street, Sag Harbor

INT: 1206 ft²
EXT: 366 ft²



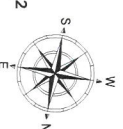
corcoran

corcoran group real estate



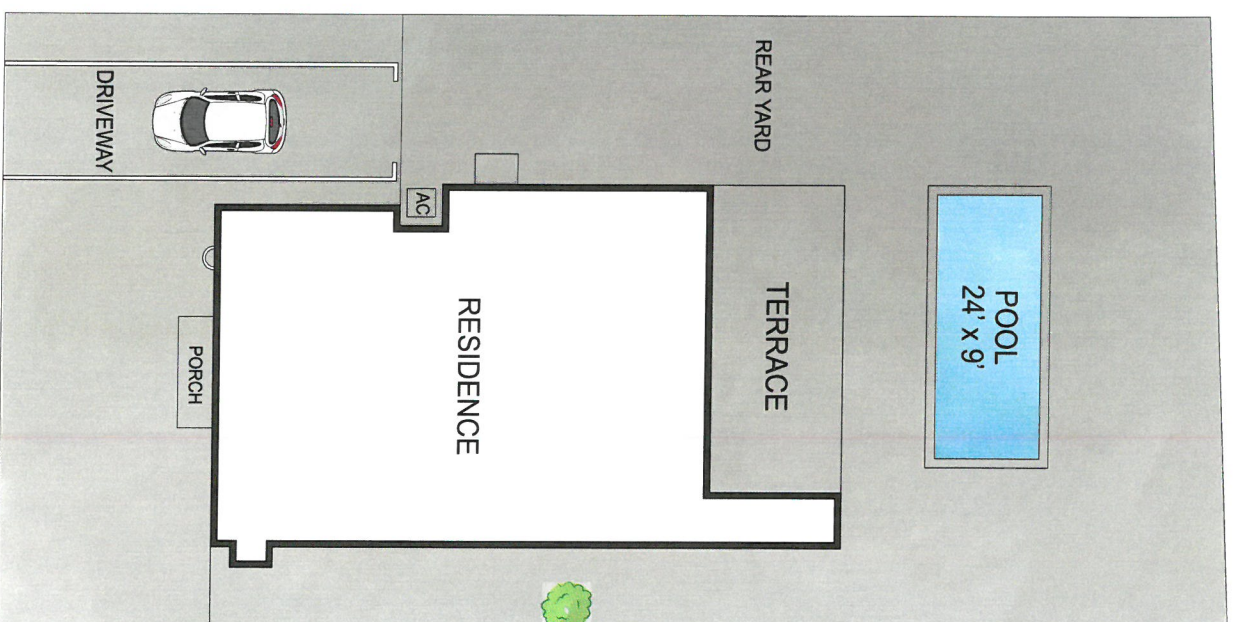
BASEMENT
CEILING HEIGHT: 8'

INT: 1206 ft²

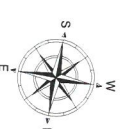


Scale in feet. Indicative only. Dimensions are approximate. All information contained herein is gathered from sources we believe to be reliable. However, we cannot guarantee its accuracy and interested persons should rely on their own enquiries.

11 Rogers Street, Sag Harbor



SITE PLAN



Scale in feet. Indicative only. Dimensions are approximate. All information contained herein is gathered from sources we believe to be reliable. However, we cannot guarantee its accuracy and interested persons should rely on their own enquiries.

11 Rogers Street, Sag Harbor