



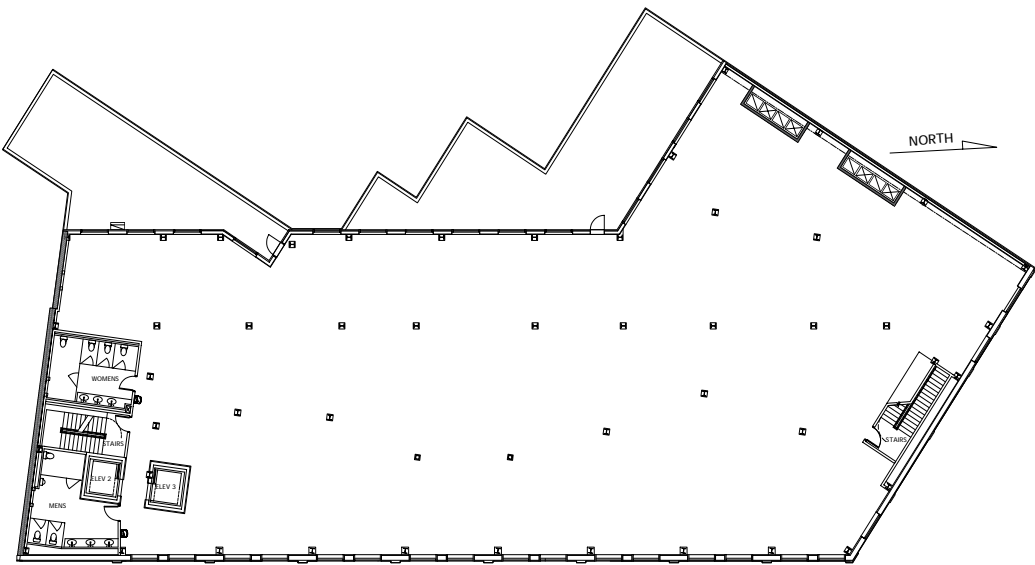
As exclusive agent, Wexler Healthcare Properties is pleased to present:

4802 New Utrecht Avenue

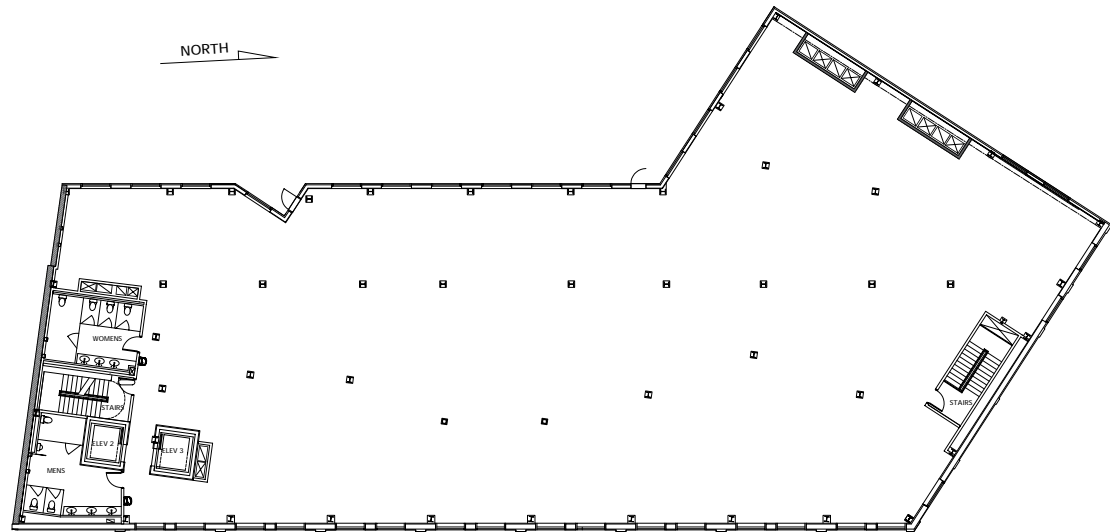
Borough Park - Brooklyn Medical Office for Lease

wexler healthcare properties
AT THE CORCORAN GROUP

The Corcoran Group is a licensed real estate broker owned and operated by NTR LLC. All information furnished regarding property for sale or rent regarding financing is from sources deemed reliable, but Corcoran makes no warranty or representation as to the accuracy thereof. All property information is presented subject to errors, omissions, price changes, changed property conditions, and withdrawal of the property from the market, without notice. All dimensions provided are approximate. To obtain exact dimensions, Corcoran advises you to hire a qualified architect or engineer.



Three story building located in the heart of Borough Park, Brooklyn. The 2nd and 3rd floors will be dedicated to medical use/community facility or non-profit use groups while the ground floor will be allocated for retail use. The building will be Article 28 compliant and will feature its own separate lobby and elevators. This property is half a block to the D subway line and is in close proximity to Maimonides Hospital. Ownership will consider reasonable divisions.



NEW UTRECHT AVENUE

17,000 SF per floor

2nd and 3rd floors available

Price available upon request

PAUL WEXLER
Licensed Associate Real Estate Broker
212.836.1075
plw@corcoran.com

CHRISTOPHER CAVORTI
Licensed Associate Real Estate Broker
718.422.2526
ccavorti@corcoran.com

JOSEF YADGAROV
Licensed Associate Real Estate Broker
212.836.1097
josef.yadgarov@corcoran.com

EVAN F. CHURCH
Licensed Associate Real Estate Broker
718.422.2506
echurch@corcoran.com

wexler healthcare properties
AT THE CORCORAN GROUP
The Undisputed Leader in New York City Healthcare Properties
Healthcare-Properties.com